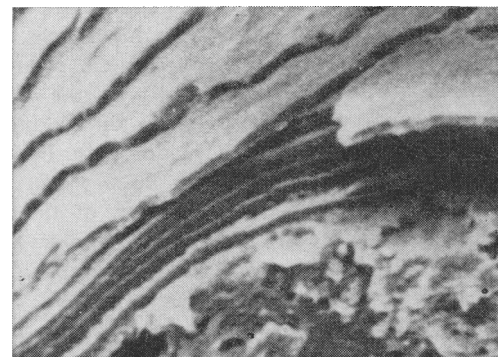


AMERICAN ASSOCIATION FOR THE ADVANCEMENT OF SCIENCE

Aromatic Hydrocarbons in the Murchison Meteorite: <i>K. L. Pering</i> and <i>C. Ponnampertuma</i>	237
Glycerinated Muscle Fibers: Relation between Isometric Tension and Adenosine Triphosphate Hydrolysis: <i>W. J. Bowen</i> and <i>L. Mandelkern</i>	239
Hybrid Ribosome Formation from <i>Escherichia coli</i> and Chloroplast Ribosome Subunits: <i>S. G. Lee</i> and <i>W. R. Evans</i>	241
Blowflies: Alteration of Adult Taste Responses by Chemicals Present during Development: <i>V. G. Dethier</i> and <i>N. Goldrich</i>	242
Human Thymidine Kinase Gene Locus: Assignment to Chromosome 17 in a Hybrid of Man and Mouse Cells: <i>O. J. Miller et al.</i>	244
Trout Leukocytes: Growth in Oxygenated Cultures: <i>J. R. Heckman,</i> <i>F. W. Allendorf, J. E. Wright</i>	246
Nuclear Localization of Histamine in Neonatal Rat Brain: <i>A. B. Young et al.</i>	247
Acetoxycycloheximide Enhances Audiogenic Seizures in DBA/2J Mice: <i>H. D. Jameson et al.</i>	249
Erythrocytes: Pits and Vacuoles as Seen with Transmission and Scanning Electron Microscopy: <i>B. Schnitzer et al.</i>	251
<i>Euglena gracilis</i> : Formation of Giant Mitochondria: <i>R. Calvayrac, F. Van Lente,</i> <i>R. A. Butow</i>	252
Connections of the Nurse Shark's Telencephalon: <i>S. O. E. Ebbesson</i> and <i>D. M. Schroeder</i>	254
Plant Response to Carbon Dioxide Enrichment under Field Conditions: A Simulation: <i>L. H. Allen, Jr., S. E. Jensen, E. R. Lemon</i>	256
Toxic Factors in Enzymes Used in Laundry Products: <i>R. Dubos</i>	259
Antiviral Activity of Polyribocytidylic Acid in Cells Primed with Polyribinosinic Acid: <i>E. De Clercq</i> and <i>P. De Somer</i>	260
Habituation of Electrically Induced Readiness to Gnaw: <i>R. E. Cain, C. P. Skriver,</i> <i>R. H. Carlson</i>	262
<i>Technical Comments: Agglutinin Interaction with Embryonic and Adult Cell</i> <i>Surfaces: A. Sivak; A. A. Moscona</i>	264



(Cover) Scanning electron micrograph of human hair ($\times 5000$). Ends were sliced off, revealing a central medulla (inner dark circle), cortex, and cuticle. (Above) Scanning electron micrograph of a human hair ($\times 775$), sliced transversely, shows six layers of cuticle surrounding cortex. Cortex appears rough, unlike smooth surface seen in cover photo. [Emil Bernstein and Eila Kairinen, Gillette Company Research Institute, Boston, Massachusetts]

CARYL P. HASKINS
PHYLLIS V. PARKINS

LEONARD M. RIESER
KENNETH V. THIMANN

WILLIAM T. GOLDEN
Treasurer

WILLIAM BEVAN
Executive Officer

GEOLOGY AND GEOGRAPHY (E)

Ellis L. Yochelson
William E. Benson

BIOLOGICAL SCIENCES (FG)

George Sprugel, Jr.
Richard J. Goss

ANTHROPOLOGY (H)

Ward Goodenough
Anthony Leeds

ENGINEERING (M)

Newman A. Hall
Raynor L. Duncombe

MEDICAL SCIENCES (N)

George B. Koelle
F. Douglas Lawrason

DENTISTRY (Nd)

Henry W. Scherp
Sholom Pearlman

**INFORMATION AND
COMMUNICATION (T)**

Edward L. Brady
Scott Adams

STATISTICS (U)

Elizabeth Scott
Ezra Glaser

**ATMOSPHERIC AND HYDROSPHERIC
SCIENCES (W)**

Thomas F. Malone
Louis J. Battan

AMERICAN ASSOCIATION FOR THE ADVANCEMENT OF SCIENCE

Science serves its readers as a forum for the presentation and discussion of important issues related to the advancement of science, including the presentation of minority or conflicting points of view, rather than by publishing only material on which a consensus has been reached. Accordingly, all articles published in *Science*—including editorials, news and comment, and book reviews—are signed and reflect the individual views of the authors and not official points of view adopted by the AAAS or the institutions with which the authors are affiliated.

Editorial Board

1971

THOMAS EISNER	NEAL MILLER
AMITAI ETZIONI	BRUCE MURRAY
EMIL HAURY	JOHN R. PIERCE
DANIEL KOSHLAND, JR.	MAXINE SINGER

1972

ALFRED BROWN	FRANK PRESS
JAMES F. CROW	FRANK W. PUTNAM
THOMAS KUHN	WALTER O. ROBERTS
ELLIOTT W. MONTROLL	

Editorial Staff

Editor

PHILIP H. ABELSON

<i>Publisher</i>	<i>Business Manager</i>
WILLIAM BEVAN	HANS NUSSBAUM

Managing Editor: ROBERT V. ORMES

Assistant Editors: ELLEN E. MURPHY, JOHN E. RINGLE

Assistant to the Editor: NANCY TEIMOURIAN

News and Comment: JOHN WALSH, ROBERT J. BAZELL, DEBORAH SHAPLEY, ROBERT GILLETTE, D. PARK TETER, EDWARD P. JONES, JOE PICHIRALLO, CONSTANCE HOLDEN, SCHERRAINE MACK

Research Topics: ALLEN L. HAMMOND

Book Reviews: SYLVIA EBERHART, KATHERINE LIVINGSTON, MARLENE GLASER

Cover Editor: GRAYCE FINGER

Editorial Assistants: MARGARET ALLEN, ISABELLA BOULDIN, BLAIR BURNS, ELEANORE BUTZ, RONNA CLINE, BARBARA GUARIN, CORRINE HARRIS, OLIVER HEATWOLE, ANNE HOLDSWORTH, ELEANOR JOHNSON, CHRISTINE KARLIK, MARSHALL KATHAN, MARGARET LLOYD, DANIEL KABOVSKY, PATRICIA ROWE, LEAH RYAN, LOIS SCHMITT, BARBARA SHEFFER, RICHARD SOMMER, YA LI SWIGART, ALICE THEILE, MARIE WEBNER

Membership Recruitment: LEONARD WRAY; *Subscriptions:* BETT SEEMUND; *Addressing:* THOMAS BAZAN

Advertising Staff

<i>Director</i>	<i>Production Manager</i>
EARL J. SCHERAGO	BONNIE SEMEL

Advertising Sales Manager: RICHARD L. CHARLES

Sales: New York, N.Y. 10036: Herbert L. Burkland, 11 W. 42 St. (212-PE-6-1858); SCOTCH PLAINS, N.J. 07076: C. Richard Callis, 12 Unami Lane (201-889-4873); MEDFIELD, MASS. 02052: Richard M. Ezequille, 4 Rolling Lane (617-444-1439); CHICAGO, ILL. 60611: John P. Cahill, Room 2107, 919 N. Michigan Ave. (312-DE-7-4973); BEVERLY HILLS, CALIF. 90211: Winn Nance, 111 N. La Cienega Blvd. (213-657-2772)

EDITORIAL CORRESPONDENCE: 1515 Massachusetts Ave., NW, Washington, D.C. 20005. Phones: (Area code 202) Central office: 467-4350; Book Reviews: 467-4367; Business Office: 467-4411; Circulation: 467-4417; Guide to Scientific Instruments: 467-4480; News and Comment: 467-4430; Reprints and Permissions: 467-4483; Research Topics: 467-4455; Reviewing: 467-4440. Cable: Advancenci, Washington. Copies of "Instructions for Contributors" can be obtained from the editorial office. See also page xv, *Science*, 25 June 1971. ADVERTISING CORRESPONDENCE: Room 1740, 11 W. 42 St., New York, N.Y. 10036. Phone: 212-PE-6-1858.

Reservations Concerning Gene Therapy

The attention recently given the prospects of gene therapy requires a realistic appraisal of the potential as well as a sober consideration of the liabilities of this therapeutic approach.

There is no doubt that the development of techniques for transfer of genes and chromosomes in laboratory studies of mammalian cells will provide a powerful research tool toward comprehension of both normal and abnormal cellular processes and will ultimately provide a rationale for the treatment of many human diseases. Gene therapy, however, involves direct application of this technology to individuals suffering from genetic disease. Possibilities under discussion include: introduction of DNA or of chromosomes either directly or by somatic cell fusion; transfer of genetic material from one host to another by virus-like particles containing DNA of the host cell; infection with active or inactive virus containing genes that can determine some particular biochemical function; or infection with a viral nucleic acid to which some cellular gene has been coupled.

Although the number of newborns suffering from disorders that can be described as genetic is very large, only a small fraction of these disorders would even in principle be amenable to intervention by any of these techniques. Neither genetically dominant disorders, nor multi-genic traits, nor disorders resulting from extra chromosomes could be alleviated. The major remaining class is that of the recessive "inborn errors of metabolism." These occur with a collective frequency of about 1 per 1000 individuals and include, conservatively, between 100 and 1000 different disorders. Gene therapy would be likely to involve the isolation of somatic cells from a diseased individual, the alteration of their genetic endowment *in vitro*, and their replacement in the individual. For example, it seems unlikely that sickle-cell anemia would be relieved if a few percent of the blood-forming cells were replaced by cells capable of producing normal hemoglobin, or that the consequences of phenylketonuria would be relieved by the presence of a few somatic cells capable of converting phenylalanine to tyrosine. On the whole, it does not seem probable that more than a small fraction of the inborn errors could be helped by these techniques, and, with new developments in the understanding of the immune response, these disorders will probably be treated more easily and effectively by tissue transplantation or some sort of enzyme therapy.

Furthermore, there are certainly hazards, both known and unknown, that accompany the presently conceived strategies. Many of the procedures are likely to be mutagenic, and who can guess how many dominant effects, visible only in the whole individual, might appear? Most of the viruses under consideration as vectors are tumor-producing. Even the fractionated virus-like particles containing cell DNA are certain to include some particles containing viral DNA. Damaging alterations of regulatory processes and even uncontrolled tumor-like growth could easily be the consequences of introducing additional chromosomes or a host of viral genes.

The promises offered by the proponents of gene therapy largely ignore its limitations and hazards. To mislead the public in this regard risks another period of disappointment and reaction. We are still primarily in a descriptive phase in our understanding of human genetics, with little, if any, idea of how to intervene safely at any level. Let us not do to ourselves what we have done to our environment. Let us now seek public support for research toward a better understanding of normal and abnormal human biology, rather than promise quick glamorous cures.—MAURICE S. FOX, *Massachusetts Institute of Technology*, and JOHN W. LITTLEFIELD, *Harvard Medical School*