

EDITORIAL

- 1265 **The Next Campaign**
Leon M. Lederman and Shirley M. Malcom

NEWS OF THE WEEK

- 1274 **Amid the Gloom, Researchers Prepare for a Boom in Funding Budgets in Brief**
>> *Science Podcast*
- 1276 **Loss of Carbon Observatory Highlights Gaps in Data**
- 1277 **Study Questions Value of School Software for Students**
- 1278 **Author of Iraqi Deaths Study Sanctioned**
- 1278 **India Allows Government Scientists to Own Companies**
- 1279 **From Protest to Power: An Advocacy Group Turns 40**
- 1280 **Retractions Put Spotlight on China's Part-Time Professor System**
- 1281 **From the *Science* Policy Blog**

NEWS FOCUS

- 1282 **The Danger Within**
- 1284 **Nigel Franks: Watching as Ants Go Marching—and Deciding—One by One**
ORIGINS
1286 **On the Origin of Photosynthesis**

LETTERS

- 1288 **For Science, No Escape from Politics**
T. Clair
Research Rankings: Does Size Matter?
A. Fitter
Response
J. Travis
Certificates Should Be Retired
J. A. Hermos and A. Spiro III
Certificates Should Be Strengthened
P. P. Gunn and S. D. Joiner
Response
L. M. Beskow et al.

1290 CORRECTIONS AND CLARIFICATIONS

BOOKS ET AL.

- 1291 **Sand**
M. Welland, reviewed by R. Holman
- 1292 **The Art and Politics of Science**
H. Varmus, reviewed by T. Pederson

POLICY FORUM

- 1293 **Responding to Possible Plagiarism**
T. C. Long et al.

PERSPECTIVES

- 1295 **More AMPAR Garnish**
C. Tigaret and D. Choquet
>> *Research Article p. 1313*
- 1296 **Eyes on the Prize?**
D. K. Levine
>> *Report p. 1335*
- 1297 **Beyond the Data Deluge**
G. Bell et al.
>> *Science Podcast*
- 1299 **Pinpointing Gravity**
N. D'Amico
>> *Report p. 1327*
- 1300 **Warming Up Food Webs**
J. M. Tylianakis
>> *Report p. 1347*
- 1301 **Anti-Rust Antitrust**
D. J. Kliebenstein and H. C. Rowe
>> *Reports pp. 1357 and 1360*
- 1302 **Infrastructure Design Issues in Disaster-Prone Regions**
S. D. Guikema

REVIEW

- 1304 **The Challenge of Finding a Cure for HIV Infection**
D. D. Richman et al.

CONTENTS continued >>



page 1282



page 1291

Downloaded from <http://science.sciencemag.org/> on February 21, 2018



COVER

Gray and black wolf pups howling in Wolf Park in Battle Ground, Indiana. In North American gray wolves (*Canis lupus*), a mutation that alters coat color from brownish-gray to black, which derives from past hybridization with domestic dogs, is increasing in forested habitats because of positive selection. See page 1339.

Image: Monty Sloan

DEPARTMENTS

- 1261 **This Week in *Science***
1266 **Editors' Choice**
1268 **Science Staff**
1271 **Random Samples**
1273 **Newsmakers**
1367 **New Products**
1368 **Science Careers**

BREVIA

- 1308** Extremely High Mutation Rate of a Hammerhead Viroid
S. Gago et al.
Viroids, the smallest RNA replicators in plants, have the highest error rates yet recorded.

RESEARCH ARTICLES

- 1309** Dynamic Order-Disorder in Atomistic Models of Structural Glass Formers
L. O. Hedges et al.
The liquid-to-glass transition of a simple mixture is controlled by parameters that drive the system away from equilibrium.
- 1313** Functional Proteomics Identify Cornichon Proteins as Auxiliary Subunits of AMPA Receptors
J. Schwenk et al.
A distinctive family of proteins involved in the assembly of the most common excitatory brain receptor has been discovered.
>> *Perspective p. 1295*

REPORTS

- 1319** Brightly Fluorescent Single-Walled Carbon Nanotubes via an Oxygen-Excluding Surfactant Organization
S.-Y. Ju et al.
Wrapping a molecule around individual single-walled carbon nanotubes enhances fluorescence.
- 1323** Probing the Angular Momentum Character of the Valence Orbitals of Free Sodium Nanoclusters
C. Bartels et al.
Photoelectron imaging uncovers electronic angular distributions in metallic nanoclusters.
- 1327** Implications of a VLBI Distance to the Double Pulsar J0737-3039A/B
A. T. Deller et al.
Tests of gravity theory that use this double pulsar, now recognized as being more distant, will be more precise.
>> *Perspective p. 1299*
- 1329** Phase-Sensitive Observation of a Spin-Orbital Mott State in Sr_2IrO_4
B. J. Kim et al.
Resonant x-ray scattering was used to probe and determine the magnetic structure of this transition metal oxide.
- 1332** The Earliest Horse Harnessing and Milking
A. K. Outram et al.
The Botai Culture on the Eurasian steppe apparently domesticated horses about 5500 years ago.

- 1335** Promoting Intellectual Discovery: Patents Versus Markets
D. Meloso et al.
A laboratory experiment shows that prizes such as patents are not the only ways to provide incentives for discovery.
>> *Perspective p. 1296; Science Podcast*
- 1339** Molecular and Evolutionary History of Melanism in North American Gray Wolves
T. M. Anderson et al.
Black coat color in wolves derives from a mutation that originated in domestic dogs.
- 1344** Drought Sensitivity of the Amazon Rainforest
O. L. Phillips et al.
Widespread surveys show that the Amazon forest lost extensive biomass carbon as a result of the severe 2005 drought.
- 1347** Species Response to Environmental Change: Impacts of Food Web Interactions and Evolution
J. P. Harmon et al.
The resilience of pea aphids to heat stress depends on interactions with predators and bacterial endosymbionts.
>> *Perspective p. 1300*
- 1350** Sensing Chromosome Bi-Orientation by Spatial Separation of Aurora B Kinase from Kinetochores
D. Liu et al.
The mechanism for sensing tension across chromosome pairs before mitotic separation relies on the distance between enzyme and substrate.
- 1354** Geometric Cue for Protein Localization in a Bacterium
K. S. Ramamurthi et al.
Membrane curvature controls the localization of a small peripheral membrane protein during bacterial spore formation.
- 1357** A Kinase-START Gene Confers Temperature-Dependent Resistance to Wheat Stripe Rust
D. Fu et al.
- 1360** A Putative ABC Transporter Confers Durable Resistance to Multiple Fungal Pathogens in Wheat
S. G. Krattinger et al.
Several specific genes in wheat confer resistance to common fungal diseases.
>> *Perspective p. 1301*

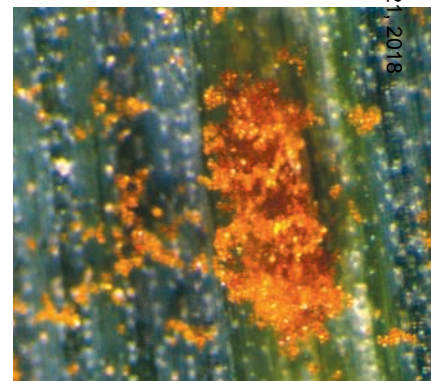
CONTENTS continued >>



page 1302



page 1332



pages 1301, 1357, & 1360

SCIENCEONLINE

SCIENCEEXPRESS

www.scienceexpress.org

Leucine-Rich Repeat Protein Complex Activates Mosquito Complement in Defense Against *Plasmodium* Parasites

M. Povelones et al.

A family of molecules, apparently unique to mosquitoes, binds to invading parasites and initiates innate immune responses.

10.1126/science.1171400

Rare Variants of *IFIH1*, a Gene Implicated in Antiviral Responses, Protect Against Type 1 Diabetes

S. Nejentsev et al.

Deep resequencing revealed rare alleles that were significantly associated with protection from diabetes.

10.1126/science.1167728

Exomic Sequencing Identifies *PALB2* as a Pancreatic Cancer Susceptibility Gene

S. Jones et al.

Mutations in a gene previously implicated in breast cancer are a contributing factor in hereditary pancreatic cancer.

10.1126/science.1171202

CD24 and Siglec-10 Selectively Repress Tissue Damage-Induced Immune Responses

G.-Y. Chen et al.

A signaling pathway involving an immune protein protects cells against the potentially fatal immune response induced by tissue damage.

10.1126/science.1168988

SCIENCENOW

www.sciencenow.org

Highlights From Our Daily News Coverage

A Better Way to Make Embryonic-Like Stem Cells

"Jumping genes" may improve efficiency and safety of creating therapeutic cells.

Why Nicotine Prefers Brains Over Brawn

Single amino acid change helps explain the first step in smoking addiction.

Drink Up, Energy Hogs

Bottled water guzzles up to 2000 times more energy than tap water.

SCIENCESIGNALING

www.sciencesignaling.org

The Signal Transduction Knowledge Environment

RESEARCH ARTICLE: Odor Coding by a Mammalian Receptor Repertoire

H. Saito et al.

Identification of mammalian olfactory receptor agonists enables development of a predictive model of receptor activation.

PERSPECTIVE: How Perfect Can Protein Interactomes Be?

E. D. Levy et al.

Evolutionary noise in protein-protein interactions implies that not all interactions must be functional.

PODCAST

J. Schlessinger and A. M. VanHook

Autophosphorylation events that control the activity of the FGF receptor are kinetically controlled and disrupted by a mutation associated with glioblastoma.

GLOSSARY

Find out what DARC, SFK, and QTL mean in the world of cell signaling.

SCIENCECAREERS

www.sciencecareers.org/career_magazine

Free Career Resources for Scientists

Redefining Tenure at Medical Schools

C. Wald

Fewer faculty jobs are tenure-track in academic medical research.

Taken for Granted: Shovel-Ready Science

B. L. Benderly

What does the stimulus windfall mean for the scientific labor market?

Can You Be Too Ready for Research Independence?

S. Carpenter

The National Institutes of Health's K99/R00 award is a great success—maybe too great a success.

March 2009 Funding News

J. Fernández

Learn about the latest in research funding, scholarships, fellowships, and internships.

SCIENCEPODCAST

www.sciencemag.org/multimedia/podcast

Free Weekly Show

Download the 6 March *Science* Podcast to hear about promoting intellectual discovery through markets, the increasing demands of data-intensive science, news about the U.S. science budget, and more.

ORIGINSBLOG

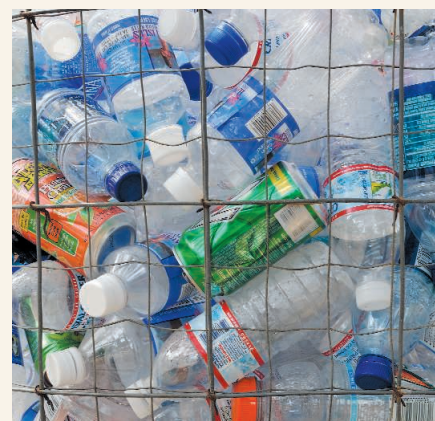
blogs.sciencemag.org/origins

A History of Beginnings

SCIENCEINSIDER

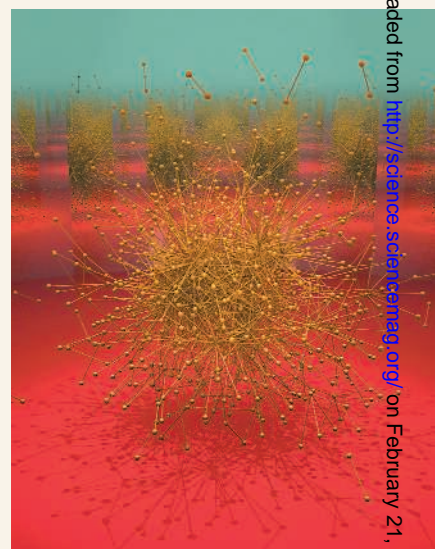
blogs.sciencemag.org/scienceinsider

Science Policy News and Analysis



SCIENCENOW

Purely expensive.



SCIENCESIGNALING

Protein interactomes.

SCIENCE (ISSN 0036-8075) is published weekly on Friday, except the last week in December, by the American Association for the Advancement of Science, 1200 New York Avenue, NW, Washington, DC 20005. Periodicals Mail postage (publication No. 484460) paid at Washington, DC, and additional mailing offices. Copyright © 2009 by the American Association for the Advancement of Science. The title SCIENCE is a registered trademark of the AAAS. Domestic individual membership and subscription (51 issues): \$146 (\$74 allocated to subscription). Domestic institutional subscription (51 issues): \$835; Foreign postage extra: Mexico, Caribbean (surface mail) \$55; other countries (air assist delivery) \$85. First class, airmail, student, and emeritus rates on request. Canadian rates with GST available upon request, GST #1254 88122. Publications Mail Agreement Number 1069624. **Printed in the U.S.A.**

Change of address: Allow 4 weeks, giving old and new addresses and 8-digit account number. **Postmaster:** Send change of address to AAAS, P.O. Box 96178, Washington, DC 20090-6178. **Single-copy sales:** \$10.00 current issue, \$15.00 back issue prepaid includes surface postage; bulk rates on request. **Authorization to photocopy** material for internal or personal use under circumstances not falling within the fair use provisions of the Copyright Act is granted by AAAS to libraries and other users registered with the Copyright Clearance Center (CCC) Transactional Reporting Service, provided that \$20.00 per article is paid directly to CCC, 222 Rosewood Drive, Danvers, MA 01923. The identification code for *Science* is 0036-8075. *Science* is indexed in the *Reader's Guide to Periodical Literature* and in several specialized indexes.

AAAS

ADVANCING SCIENCE. SERVING SOCIETY

Science

323 (5919)

Science **323** (5919), 1261-1367.

ARTICLE TOOLS

<http://science.sciencemag.org/content/323/5919>

PERMISSIONS

<http://www.sciencemag.org/help/reprints-and-permissions>

Use of this article is subject to the [Terms of Service](#)

Science (print ISSN 0036-8075; online ISSN 1095-9203) is published by the American Association for the Advancement of Science, 1200 New York Avenue NW, Washington, DC 20005. 2017 © The Authors, some rights reserved; exclusive licensee American Association for the Advancement of Science. No claim to original U.S. Government Works. The title *Science* is a registered trademark of AAAS.