

You can stop daydreaming. Knockout rats are now a reality.

Introducing SAGE™ Labs (Sigma **A**dvanced **G**enetic **E**ngineering), a new initiative of Sigma Life Science dedicated to unlocking new possibilities for *in vivo* gene targeting. We focus on the development and characterization of unique, next-generation animal research models – leaving you free to focus on the next brilliant discovery.

Ready to learn more?

Check out our knockout rat models, and learn about our custom model development program by visiting us at:

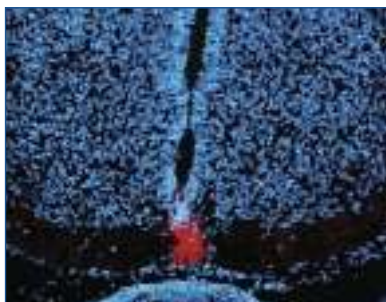
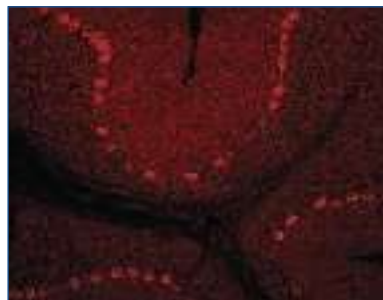
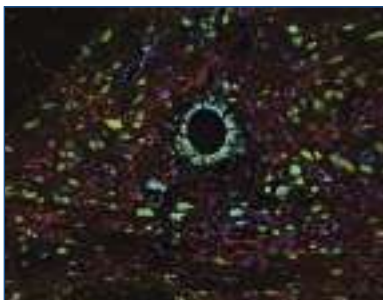
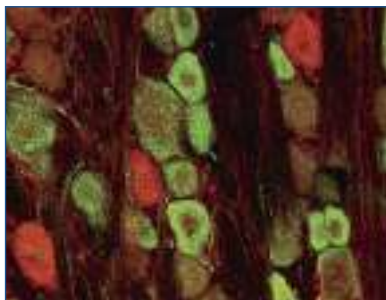
sageresearchmodels.com.

 **SAGE™** LABS
Sigma Advanced
Genetic Engineering

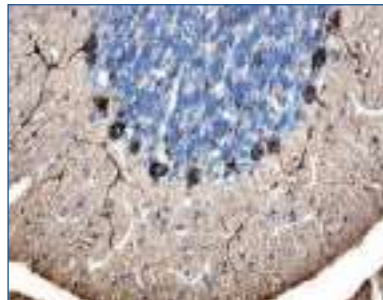
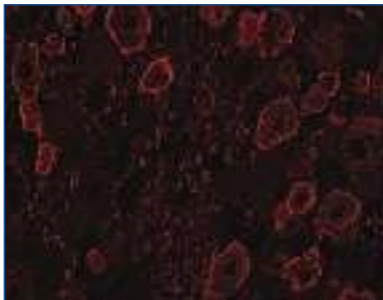
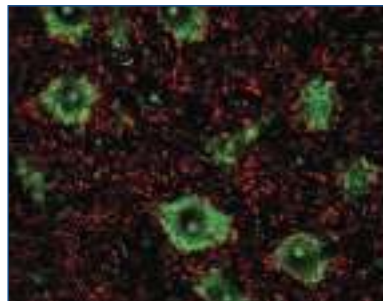
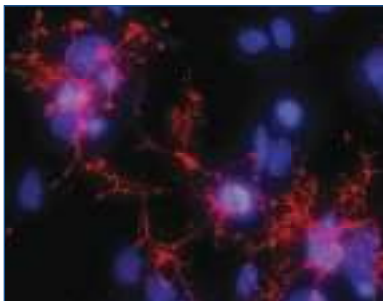
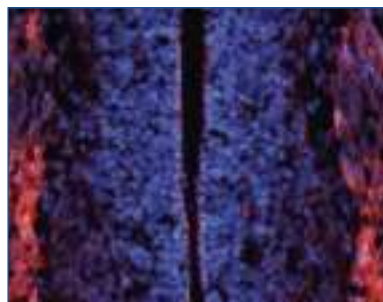
SAGE is a trademark of Sigma-Aldrich and its affiliate Sigma-Aldrich Biotechnology, L.P.

R&D Systems

Antibodies for Neuroscience Research



Simply brilliant.



For research use only. Not for use in diagnostic procedures.

For more information visit our website at www.RnDSystems.com/go/Neuroscience

R&D Systems Tools for Cell Biology Research™

USA & Canada **R&D Systems, Inc.** Tel: (800) 343-7475 info@RnDSystems.com

Europe **R&D Systems Europe, Ltd.** Tel: +44 (0)1235 529449 info@RnDSystems.co.uk

Selection expanding weekly—visit www.RnDSystems.com/go/request to sign up for weekly new product updates.



GE Healthcare
Life Sciences

Cell analysis just got easier

The new IN Cell Analyzer 2000 makes previously challenging cell analysis a thing of the past by offering significant throughput gains compared to typical lamp based imaging systems, while still delivering enabling features for your research assays.

From organelles to cells, to tissues and whole organisms – from fixed end-point assays to extended live cell studies – from manual microscopy to automated high-content screening, IN Cell Analyzer 2000 offers you the performance you need for all your screening and research – making your cell analysis faster and easier.

At GE Healthcare Life Sciences, our focus is on helping scientists achieve even more, faster. It's a commitment we have in our genes. And all this is backed by the service, support, and investment for the future that being part of GE can bring.

Cell analysis just got easier. Find out more. Visit www.gelifesciences.com/incell

| ÄKTA | Amersham | Biacore | **IN Cell Analysis** | Whatman | GE Service |

INtroducing the new IN Cell Analyzer 2000



imagination at work

ÄKTA, Amersham, Biacore and Whatman are trademarks of GE Healthcare companies.
© 2009 General Electric Company – All rights reserved.
First published May 2009
GE Healthcare Bio-Sciences AB,
Björkgatan 30, 751 84 Uppsala, Sweden
GE09-09



Pure excellence, pure efficiency

QIAxcel and QIAcube



- Automate your spin column preps on the QIAcube
- Eliminate tedious DNA fragment and RNA analysis with the QIAxcel
- Free up your time with automated purification and analysis

Visit www.qiagen.com/goto/PureExcellence for more information!





Freedom of Expression

Assays and Panels for Human Targets of Your Choice



Now online: realtimeready.roche.com

Custom assay selection and custom panel configuration on the RealTime ready Configurator.

For life science research only. Not for use in diagnostic procedures.

This LightCycler® 480 Real-Time PCR System is a real-time thermal cycler licensed for research use only under U.S. Patent No. 6,814,934 and corresponding claims in its non-U.S. counterparts, and under one or more of U.S. Patents Nos. 5,475,610, 5,602,756, 6,703,236, 7,238,517, 7,504,241, 7,537,377 or corresponding claims in their non-U.S. counterparts, owned by Applied Biosystems, LLC. No rights are conveyed expressly, by implication or estoppel to any other patent claims. The LightCycler 480 Real-Time PCR System is not cleared for in vitro diagnostic use in the U.S. For further information on purchasing additional rights, contact the Director of Licensing at Applied Biosystems, 850 Lincoln Centre Drive, Foster City, California, 94404, USA. No right is conveyed expressly, by implication, or by estoppel under any other patent claim, such as claims to apparatus, reagents, kits, or methods such as 5' nuclease methods. License rights to practice PCR methods under the foregoing Roche patents for research and other non-in vitro diagnostic applications may be purchased from Applied Biosystems or may be obtained by purchasing licensed reagents from Roche, Applied Biosystems, or other Authorized third party. For information on purchasing licenses for research and other non-in vitro diagnostic applications, contact the Director of Licensing at Applied Biosystems, 850 Lincoln Centre Drive, Foster City, California 94404, USA. A license to practice PCR methods with other real-time detection under patents of F. Hoffmann-La Roche Ltd. and other Roche Molecular Systems („Roche“) for in vitro diagnostic applications may be purchased from Roche or may be obtained by purchasing in vitro diagnostic reagents from Roche or any other Authorized third party. The LightCycler 480 Real-Time PCR System is not cleared for in vitro diagnostic use in the U.S.

Practice of the patented 5' Nuclease Process requires a license from Applied Biosystems. The purchase of this product includes an immunity from suit under patents specified in the product insert to use only the amount purchased for the purchaser's own internal research when used with the separate purchase of Licensed Probe. No other patent rights are conveyed expressly, by implication, or by estoppel. Further information on purchasing licenses may be obtained from the Director of Licensing, Applied Biosystems, 850 Lincoln Centre Drive, Foster City, California 94404, USA.

LIGHTCYCLER and REALTIME READY are trademarks of Roche.
Other brands or product names are trademarks of their respective holders.
© 2009 Roche Diagnostics GmbH. All rights reserved.

Function tested custom qPCR assays are now only a few clicks away with the new RealTime ready Configurator. Use this free online assay selection and shopping tool to order single assays or to configure your own custom panels on LightCycler® 480 Multiwell Plates.

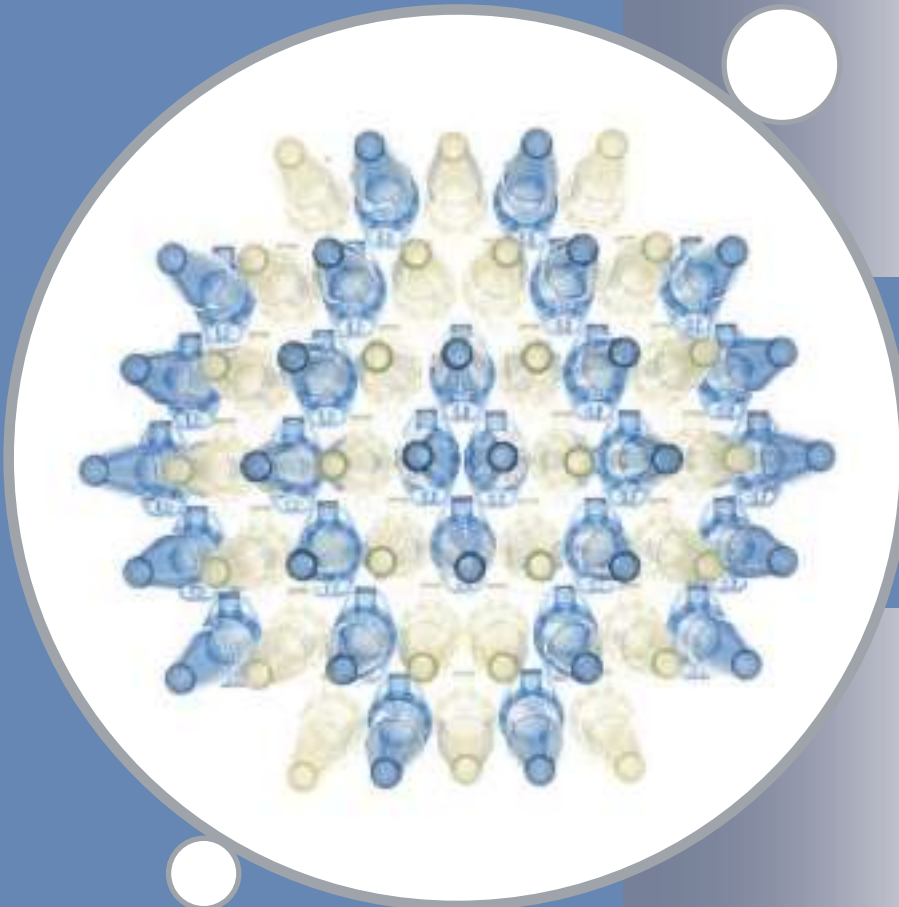
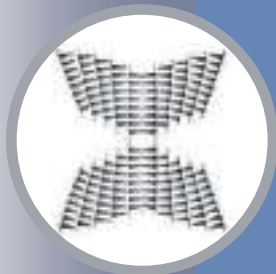
- Analyze your knockdown experiments or microarray results in the context of complex biological pathways or signaling cascades.
- Conveniently select assays and configure your custom panel with interactive pathway maps or pre-selected targets.
- Simply add cDNA and master mix to run these pre-plated, dried assays on your LightCycler® 480 Instrument.

Rely on function tested qPCR assays based on proven Universal Probelibrary technology.

Visit www.realtimeready.roche.com to learn more or to start configuring your next assay.

Roche Diagnostics GmbH
Roche Applied Science
Werk Penzberg
82372 Penzberg, Germany





Make the best of it!

Top quality for your sample.

Each of your valuable samples deserves the best treatment. See for yourself how the original Eppendorf Tubes will save time and reduce costs.

Sample loss in tubes can be time consuming and expensive. Therefore, the close environment of each sample should be adapted to its specific quality and purity needs. This can involve a specific purity level or the absence of certain substances, but also stability, reliability, or geometry. Eppendorf Tubes are designed to cover all of the specific needs of your samples!

Eppendorf Safe-Lock Tubes

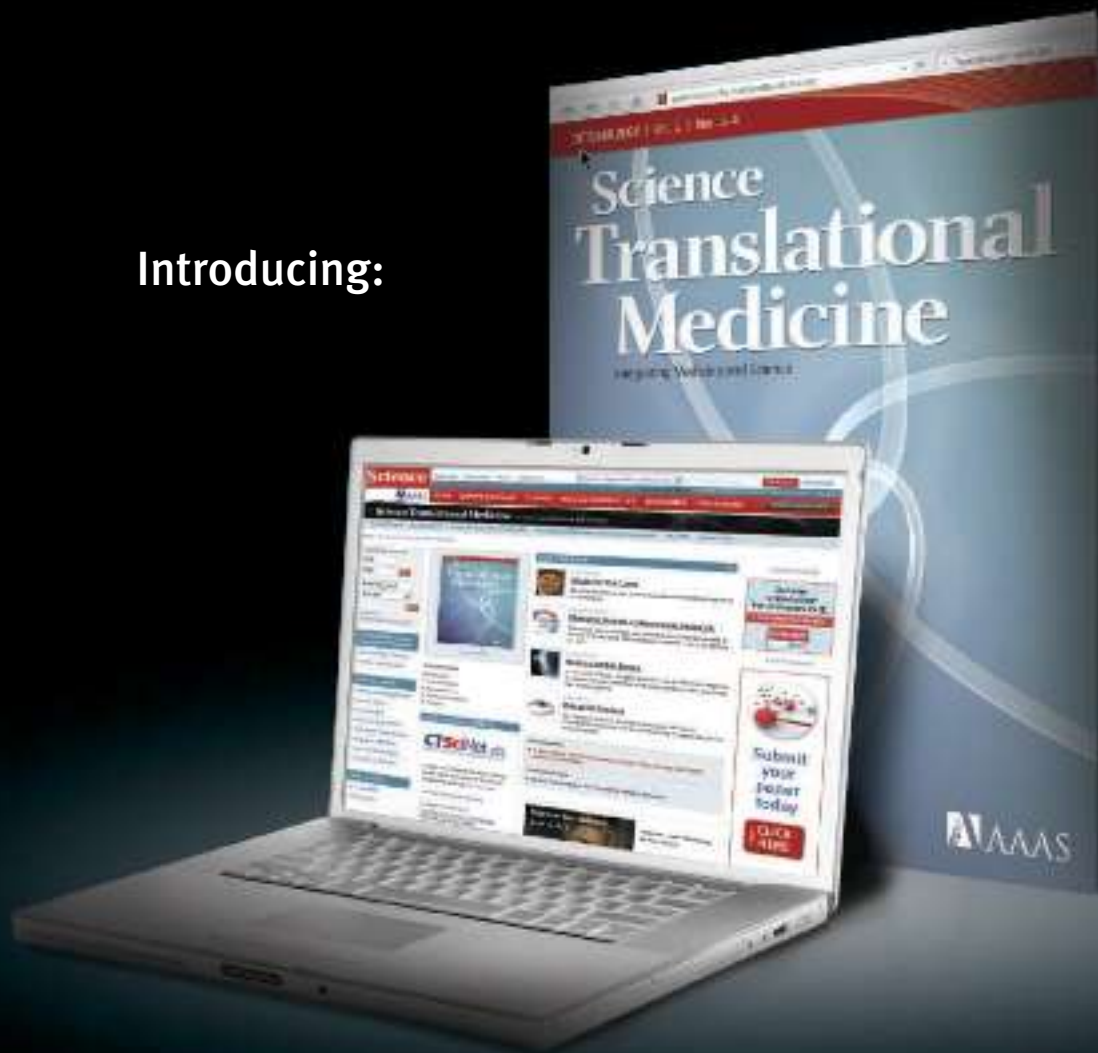
- Safe-Lock prevents accidental lid opening during incubation
- Precise sealing for lowest evaporation rates
- Large, frosted lid for easy labeling
- Exceptional centrifugation stability prevents tube breaking
- Hinged lid for easy, contamination-free opening
- Batch certified Eppendorf Biopur® or PCR clean quality

Learn more about Eppendorf consumables:

www.eppendorf.com/consumables

eppendorf
In touch with life

Introducing:



The New Journal from AAAS and *Science*.

Translational medicine lies at the expanding intersection of basic science and clinical medicine. As this field grows in importance, the need for reliable, peer-reviewed information in this area is growing as well. To address this need, AAAS is launching *Science Translational Medicine*, a new online journal that examines all aspects of this interdisciplinary approach to solving human health problems.

With reviews and original research on topics including cardiovascular disease, cancer, immunology and more, *Science Translational Medicine* covers an array of disciplines and a range of discoveries. The result is a new journal from the publishers of *Science* – a journal with novel insights and discoveries in the exciting field of translational medicine.

For more information, and to subscribe, visit:
www.ScienceTranslationalMedicine.org



INTEGRATING MEDICINE AND SCIENCE



AAAS is here.

Geospatial Technologies
Human Rights

Remote, isolated, catastrophic events occur across the globe that affect civilians, the environment, indigenous rights, and more. The AAAS Science and Human Rights Program is the application of geospatial technologies to broaden the ability of non-governmental organizations to rapidly gather, analyze, and disseminate information in these times of crisis. And this is just one of the ways that AAAS is committed to advancing science to support a healthy and prosperous world. Join us. Together we can make a difference. aaas.org/plusyou/humanrights



AAAS + U = Δ



AAAS is here.

Evolution

In America today, 1 in 3 individuals do not accept evolution.¹ That's why AAAS continues to play an important role in the effort to protect the integrity of science education. AAAS is hard at work ensuring that evolution continues to be taught in science classrooms, but we need your help. Join us. Together we can make a difference. aaas.org/plusyou/evolution

 AAAS + U = Δ

¹ Pew Research Center for the People & the Press. May 2009, General Public Science Survey.

Drug Discovery Kits

The Maybridge Quick2Lead Compound Kits are designed to save time and money by enabling rapid compound library synthesis around bioactive “hits” from screening assays. The kits are made up of preweighed, diverse building-block selections, facilitating rapid capture of structure-activity data from the closely related structural analogs within the library. Quick2Lead Compound Kits are available as five functionality-based kits, with each containing 48 carefully selected compounds. This enables the exploration of a wide area of chemical space to maximize credible structure-activity data acquisition for the successful conversion of an initial hit into a genuine, optimizable lead. Because these compounds are all preweighed, the kits are ready to use by simply adding solvent and transferring to a synthesizer. The five functional groups available are carboxylic acids, sulfonyl chlorides, amines, anilines, and boronic acids.

Thermo Fisher Scientific
For information 508-742-5254
www.thermofisher.com



Direct Activity Assay

Direct Activity Assay kits for methyltransferases—protein arginine methyltransferase 1 (PRMT1), PRMT3, PRMT5, and Set 7/9—have been developed to enable the measurement of enzyme activity using purified enzymes or enzyme-containing extracts. Each kit is supplied in a 96-well plate precoated with peptide substrates, an antibody against the specific methylated target, a secondary europium-labeled antibody, S-adenosylmethionine, methyltransferase assay buffer, and purified enzyme for 100 enzyme reactions. The keys to the kits are the highly specific antibodies that recognize methylated residues of the different substrates. They require only a few simple steps for detection of methyltransferase activity.

AMS Biotechnology

For information +44-1235-828200
www.amsbio.com

Laser Microdissection

The Leica LMD6500 microdissection tool can distinguish between relevant and irrelevant cells and tissues. It allows forensic DNA technologists to selectively and routinely analyze microscopic regions of interest down to a single cell to obtain results and make determinations that are relevant, reproducible, and specific. The laser beam movement of the Leica LMD6500 is controlled by high-precision optics, and the microscope stage and the sample are both fixed. This combination allows precise cutting accuracy at high magnifications, as well as high cutting speed at low magnifications. Both are prerequisites to obtain a homogeneous material for downstream analysis and reliable results. The laser microdissection makes use of a simple method of gravity to gently collect the samples. The dissected material, no matter its size or shape, is collected in a contact-free, contamination-free manner.

Leica

For information 847-405-7026
www.leica-microsystems.com

Polarization Microscopy

The Axio Imager 2 systems are meant to meet user demand for a versatile and easy-to-use polarization microscope. The systems exhibit

high resolution and offer all contrasting and measuring techniques used in polarization microscopy. They provide user-friendly operation via a touchscreen, an encoded nosepiece, and many automated functions for convenience and flexibility. These upgradable microscopes offer the option of encoded, partly to fully motorized components for both traditional and future applications. They feature the optimized Infinity Color & Contrast Corrected System beam path and high-contrast objectives. They also have the capability to combine reflected and transmitted light.

Carl Zeiss MicroImaging

For information 800-233-2343
www.zeiss.com/micro

Cell Analyzer

The BD LSRFortessa cell analyzer is a compact system that provides the ability to conduct complex multicolor flow cytometry experiments. It supports up to five lasers and 18 colors simultaneously in a benchtop footprint that is significantly smaller than the BD LSR II cell analyzer. Researchers can choose from 30 positions for detectors and 11 laser wavelengths and multiple power options to configure a system that meets their precise assay requirements.

BD Biosciences

For information 877-232-8995
www.bdbiosciences.com/lsr

Circularization of Single-Stranded DNA

CirLigase II ssDNA Ligase efficiently catalyzes the circularization of single-stranded (ss) DNA greater than 15 bases without the need for oligonucleotide bridges. Virtually no linear or circular concatamers are produced by the enzyme. CirLigase II Ligase is an improved version of the original CirLigase enzyme, and is suitable for preparing circular templates from oligonucleotides or single-stranded complementary DNA for rolling-circle replication or rolling-circle transcription assays.

Epicentre Biotechnologies

For information 800-284-8474
www.EpiBio.com

Electronically submit your new product description or product literature information! Go to www.sciencemag.org/products/newproducts.dtl for more information.

Newly offered instrumentation, apparatus, and laboratory materials of interest to researchers in all disciplines in academic, industrial, and governmental organizations are featured in this space. Emphasis is given to purpose, chief characteristics, and availability of products and materials. Endorsement by *Science* or AAAS of any products or materials mentioned is not implied. Additional information may be obtained from the manufacturer or supplier.

Put yourself in the picture by entering the **2010 AAAS Student Poster Competition**. Winners receive a cash prize, framed award certificate, and a one-year AAAS membership—including a subscription to *Science*!



CALL FOR ENTRIES

AAAS Student Poster Competition

American Association for the Advancement of Science

Annual Meeting

18—22 February 2010 San Diego

“Bridging Science and Society”

Submission Deadline: Sunday, 1 November 2009

- Don't miss out on this opportunity to put your research in the spotlight and discuss your work with leading scientists and engineers from across the country and around the world.
- All submissions will be peer reviewed. Accepted posters will be listed in the *2010 Annual Meeting Poster Guide*.
- Winners will be published in *Science* and at www.aaas.org/meetings.
- The competition is open to college undergraduate and graduate students only.

To learn more, including how you can volunteer and attend the Annual Meeting for free, visit

www.aaas.org/meetings

EXTRAORDINARY REWARDS

35th Anniversary Offers

As a trusted resource in the life science community, New England Biolabs would like to thank our customers for 35 years of support. Join us in celebrating our 35th anniversary by visiting www.neb.com to find 12 months of exciting offers, including significant product discounts and giveaways.

Look for the 35th Anniversary Offers icon on our website to learn about our monthly special offer.



www.neb.com



CLONING & MAPPING

DNA AMPLIFICATION
& PCR

RNA ANALYSIS

PROTEIN EXPRESSION
& ANALYSIS

GENE EXPRESSION
& CELLULAR ANALYSIS

www.neb.com