



Cytokine Center

Browse our web site with over 1300 proteins, including recombinant cytokines, growth factors, chemokines and neurotrophins. Daily shipping and competitive pricing are offered. Bulk quantities of many proteins available.

PROTEINS

4-1BBL
 4-1BB Receptor
 6 Ckine
 ACAD8
 ACAT2
 gAcrp30/Adipolean
 Activin A
 Activin B
 ACY1
 ADAT1
 Adiponectin
 ADRP
 AITRL
 Akt1
 Alpha-Feto Protein (AFP)
 Alpha-Galactosidase A
 Angiotensin-1 (Ang-1)
 Angiotensin-2 (Ang-2)
 Angiostatin K1-3
 Annexin-V
 apo-SAA
 Apolipoprotein A-1
 Apolipoprotein E2
 Apolipoprotein E3
 Apolipoprotein E4
 APRIL
 Artemin
 ATF2
 Aurora A
 Aurora B
 BAFF
 BAFF Receptor
 BCA-1 / BLC / CXCL13
 BCMA
 BD-1
 BD-2
 BD-3
 BDNF
 Betacellulin
 Bivalirudin
 BMP-2
 BMP-4
 BMP-6
 BMP-7
 BMP-13
 sBMPR-1A
 Brain Natriuretic Protein
 BRAK
 Breast Tumor Antigen
 C5a
 C5L2 Peptide
 C-10
 C-Reactive Protein
 C-Src
 Calbindin D-9K
 Calbindin D-28K
 Calbindin D-29K
 Calmodulin
 Calcitonin Acetate
 Carbonic Anhydrase III
 Carcino-embryonic Antigen
 Cardiostrophin-1
 Caspase-3
 Caspase-6
 CD4
 CD14
 CD22
 CD40 Ligand / TRAP

CD95 / sFas Ligand
 CD105 / Endoglin
 CHIPS
 CNTF
 Collagen
 CREB
 CTACK / CCL27
 CTGF
 CTGFL / WISP-2
 CTLA-4 / Fc
 CXCL16
 CYR61
 Cytokeratin 8
 DEP-1
 Desmopressin
 Disulfide Oxidoreductase
 E-selectin
 ECGF
 EGF
 Elafin / SKALP
 EMAP-II
 ENA-78 / CXCL5
 Endostatin
 Enteropeptidase
 Eotaxin / CCL11
 Eotaxin-2
 Eotaxin-3 (TSC)
 EPHB2
 EPHB4
 Epigen
 Epiregulin
 Eptifibatide
 Erk-2
 Erythropoietin (EPO)
 Exodus-2
 Fas Ligand
 Fas Receptor
 FGF-1 (acidic)
 FGF-2 (basic)
 FGF-4
 FGF-5
 FGF-6
 FGF-7 / KGF
 FGF-8
 FGF-9
 FGF-10
 FGF-16
 FGF-17
 FGF-18
 FGF-19
 FGF-20
 sFGFR-1 (IIIc) / Fc Chimera
 sFGFR-2 (IIIc) / Fc Chimera
 sFGFR-3 / Fc Chimera
 sFGFR-4 / Fc Chimera
 sFlt-1 (native)
 sFlt-1 (D3)
 sFlt-1 (D4)
 sFlt-1 (D5)
 sFlt-1 (D7)
 Flt3-Ligand
 sFlt-4
 sFlt-4 / Fc Chimera
 Follistatin
 FSH
 Fractalkine / CX3C
 G-CSF
 α-Galactosidase A
 Galectin-1

Galectin-3
 Gastrointestinal CA
 GCP-2
 GDF-3
 GDF-9
 GDF-11
 GDNF
 GLP-1
 Glucagon
 GM-CSF
 Goserelin
 GPBB
 Granzyme B
 GROα
 GROβ
 GROγ
 GRO/MGSA
 Growth Hormone
 Growth Hormone BP
 GST-p21/WAF-1
 HB-EGF
 HCC-1
 HGF
 Histidyl-tRNA synthetase
 Histrelin
 HRG1-β1
 I-309
 I-TAC
 IFN-α
 IFN-α A
 IFN-α 2a
 IFN-α 2b
 IFN-β
 IFN-γ
 IFN-Omega
 IGF-1
 IGF-II
 proIGF-II
 IGFBP-1
 IGFBP-2
 IGFBP-3
 IGFBP-4
 IGFBP-5
 IGFBP-6
 IGFBP-7
 IL-1α
 IL-1β
 IL-2
 IL-3
 IL-4
 sIL-4 Receptor
 IL-5
 IL-6
 sIL-6 Receptor
 IL-7
 IL-8 (72 a.a.)
 IL-8 (77 a.a.)
 IL-9
 IL-10
 IL-11
 IL-12
 IL-13
 IL-13 analog
 IL-15
 IL-16 (121 a.a.)
 IL-16 (130 a.a.)
 IL-17
 IL-17B
 IL-17D

IL-17E
 IL-17F
 IL-19
 IL-20
 IL-21
 IL-22
 IL-31
 Insulin
 IP-10
 JE
 JNK2a1
 JNK2a2
 KC / CXCL1
 KGF
 L-asparaginase
 LAG-1
 LALF Peptide
 LAR-PTP
 LBP
 LC-1
 LD-78β
 LDH
 LEC / NCC-4
 Leptin
 LIGHT
 LIX
 LKM
 LL-37
 Lungkine / CXCL15
 Lymphotactin
 sLYVE-1
 M-CSF
 MCP-1 (MCAF)
 MCP-2
 MCP-3
 MCP-4
 MCP-5
 MDC (67 a.a.)
 MDC (69 a.a.)
 MDH
 MEC
 Mek-1
 MIA
 Midkine
 MIG / CXCL9
 MIP-1α / CCL3
 MIP-1β / CCL4
 MIP-3 / CCL23
 MIP-3α / CCL20
 MIP-3β / CCL19
 MIP-4 (PARC) / CCL18
 MIP-5 / CCL15
 MMP-3
 MMP-7
 MMP-13
 Myostatin
 Nanog
 NAP-2
 Neurturin
 NFAT-1
 β-NGF
 NOGGIN
 NOV
 NP-1
 NT-1/BCSF-3
 NT-3
 NT-4
 Ocreotide
 Oncostatin M
 Osteoprotegerin (OPG)
 OTOR
 Oxytocin
 p38-α
 PAI-1
 Parathyroid Hormone
 PDGF-AA
 PDGF-AB
 PDGF-BB
 PDGF-CC
 PDGF-CF
 PF-4
 PIGF-1

PIGF-2
 PKA α-subunit
 PKC-α
 PKC-γ
 Pleiotrophin
 PLGF-1
 Polymyxin B (PMB)
 PRAS40
 PRL-1
 PRL-2
 PRL-3
 Prokineticin-2
 Prolactin
 Protirelin
 PTHrP
 PTP1B
 PTP-IA2
 PTP-MEG2
 PTP-PEST
 sRANK
 sRANKL
 RANTES
 RELM-α
 RELM-β
 Resistin
 RPTPβ
 RPTPγ
 RPTPμ
 SCF
 SCGF-α
 SCGF-β
 SDF-1α
 SDF-1β
 Secretin
 SF20
 SHP-2
 STAT1
 c-Src
 TACI
 TARC
 TC-PTP
 TECK
 TFF2
 TGF-α
 TGF-β1
 TGF-β2
 TGF-β3
 Thymosin α1
 sTIE-1/Fc Chimera
 sTIE-2/Fc Chimera
 TL-1A
 TNF-α
 TNF-β
 sTNF-receptor Type I
 sTNF-receptor Type II
 TPO
 sTRAIL R-1 (DR4)
 sTRAIL R-2 (DR5)
 TRAIL/Apo2L
 TSG
 TSH
 TSLP
 TWEAK
 TWEAK Receptor
 Urokinase
 EG-VEGF
 VEGF121
 VEGF145
 VEGF165
 VEGF-C
 VEGF-C 1125
 VEGF-E
 HB-VEGF-E
 sVEGFR-1
 sVEGFR-2
 sVEGFR-3
 Visfatin
 WISP-1
 WISP-2
 WISP-3
 WNT-1

480 Neponset Street, Building 12A, Canton, MA 02021 • TEL (781) 828-0610 • EMAIL info@cellsciences.com

CALL TOLL FREE (888) 769-1246 • FAX (781) 828-0542 • VISIT www.cellsciences.com

Stimulus

Package Research Solutions

Cell
Analysis

Protein
Analysis

Genetic
Analysis

Special Savings on
Systems, Service and Support
Register Today

At Beckman Coulter, we are committed to helping stretch funds you receive as part of the American Recovery and Investment Act of 2009. By registering your project today, you will be able to enjoy money-saving promotions for instruments, accessories, reagents, comprehensive value-added service and support.

Register your grant or project with the Beckman Coulter Stimulus PLUS Grant Award Program to receive special savings on Products, Systems, Service and Support.

Enhance your purchase power and further enable your success.
Register at www.BeckmanCoulter.com/Stimulus



Cell analysis just got easier

The new IN Cell Analyzer 2000 makes previously challenging cell analysis a thing of the past by offering significant throughput gains compared to typical lamp based imaging systems, while still delivering enabling features for your research assays.

From organelles to cells, to tissues and whole organisms – from fixed end-point assays to extended live cell studies – from manual microscopy to automated high-content screening, IN Cell Analyzer 2000 offers you the performance you need for all your screening and research – making your cell analysis faster and easier.

At GE Healthcare Life Sciences, our focus is on helping scientists achieve even more, faster. It's a commitment we have in our genes. And all this is backed by the service, support, and investment for the future that being part of GE can bring.

Cell analysis just got easier. Find out more. Visit www.gelifesciences.com/incell

| ÄKTA | Amersham | Biacore | **IN Cell Analysis** | Whatman | GE Service |

Introducing the new IN Cell Analyzer 2000



Automated sample and assay technologies by QIAGEN

Free up your time



Automated solutions from sample to result:

- The widest choice of sample processing protocols
- Low-, medium-, and high-throughput automation
- Leading solutions for molecular diagnostics
- Plug-and-play automated sample preparation
- Quantitative, real-time PCR detection
- Automated analysis of DNA fragments and RNA
- High-resolution sequence-based DNA detection and quantification
- HPV testing

Making improvements in life possible — www.qiagen.com





Freedom of Expression

Assays and Panels for Human Targets of Your Choice



Now online: realtimeready.roche.com

Custom assay selection and custom panel configuration on the RealTime ready Configurator.

For life science research only. Not for use in diagnostic procedures.

This LightCycler® 480 Real-Time PCR System is a real-time thermal cycler licensed for research use only under U.S. Patent No. 6,814,934 and corresponding claims in its non-U.S. counterparts, and under one or more of U.S. Patents Nos. 5,475,810, 5,602,756, 6,703,236, 7,238,517, 7,504,241, 7,537,377 or corresponding claims in their non-U.S. counterparts, owned by Applied Biosystems, LLC. No rights are conveyed expressly, by implication or estoppel to any other patent claims. The LightCycler 480 Real-Time PCR System is not cleared for in vitro diagnostic use in the U.S. For further information on purchasing additional rights, contact the Director of Licensing at Applied Biosystems, 850 Lincoln Centre Drive, Foster City, California, 94404, USA. No right is conveyed expressly, by implication, or by estoppel under any other patent claim, such as claims to apparatus, reagents, kits, or methods such as 5' nuclease methods. License rights to practice PCR methods under the foregoing Roche patents for research and other non-in vitro diagnostic applications may be purchased from Applied Biosystems or may be obtained by purchasing licensed reagents from Roche, Applied Biosystems, or other Authorized third party. For information on purchasing licenses for research and other non-in vitro diagnostic applications, contact the Director of Licensing at Applied Biosystems, 850 Lincoln Centre Drive, Foster City, California 94404, USA. A license to practice PCR methods with other real-time detection under patents of F. Hoffmann-La Roche Ltd. and other Roche Molecular Systems („Roche“) for in vitro diagnostic applications may be purchased from Roche or may be obtained by purchasing in vitro diagnostic reagents from Roche or any other Authorized third party. The LightCycler 480 Real-Time PCR System is not cleared for in vitro diagnostic use in the U.S.

Practice of the patented 5' Nuclease Process requires a license from Applied Biosystems. The purchase of this product includes an immunity from suit under patents specified in the product insert to use only the amount purchased for the purchaser's own internal research when used with the separate purchase of Licensed Probe. No other patent rights are conveyed expressly, by implication, or by estoppel. Further information on purchasing licenses may be obtained from the Director of Licensing, Applied Biosystems, 850 Lincoln Centre Drive, Foster City, California 94404, USA.

LIGHTCYCLER and REALTIME READY are trademarks of Roche.
Other brands or product names are trademarks of their respective holders.
© 2009 Roche Diagnostics GmbH. All rights reserved.

Function tested custom qPCR assays are now only a few clicks away with the new RealTime ready Configurator. Use this free online assay selection and shopping tool to order single assays or to configure your own custom panels on LightCycler® 480 Multiwell Plates.

- Analyze your knockdown experiments or microarray results in the context of complex biological pathways or signaling cascades.
- Conveniently select assays and configure your custom panel with interactive pathway maps or pre-selected targets.
- Simply add cDNA and master mix to run these pre-plated, dried assays on your LightCycler® 480 Instrument.

Rely on function tested qPCR assays based on proven Universal ProbeLibrary technology.

Visit www.realtimeready.roche.com to learn more or to start configuring your next assay.

Roche Diagnostics GmbH
Roche Applied Science
Werk Penzberg
82372 Penzberg, Germany

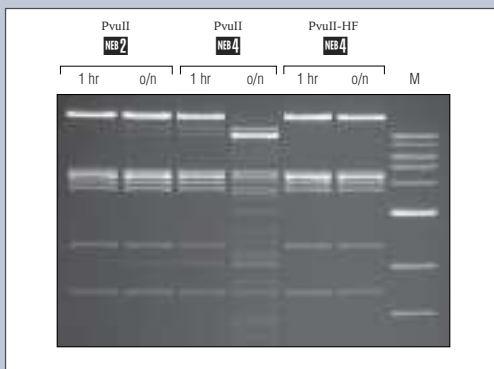


EXCEPTIONAL PERFORMANCE

Restriction Enzymes from New England Biolabs

With 35 years of experience in enzyme technology, New England Biolabs leads the industry in the study and improvement of restriction enzymes. NEB is pleased to introduce a line of High Fidelity (HF) enzymes that have been engineered for reduced star activity. HF enzymes bring a new level of flexibility when choosing reaction conditions, including volume, incubation time and buffer compatibility. Make NEB your first choice and experience the exceptional performance of this next generation in restriction enzyme technology.

Reduced star activity with HF Enzymes from NEB



Recombinant PvuII, normally supplied in NEBuffer 2, exhibits star activity when used in extended incubations or in alternate buffers. Star activity is significantly reduced with PvuII-HF, even under extended incubation.

Advantages:

- **Selection** – More specificities than any other supplier
- **Convenience** – Optimal activity for over 160 enzymes in a single buffer **NEB 4**
- **Quality** – State-of-the-art production and stringent QCs
- **Innovation** – HF enzymes engineered for reduced star activity
- **Performance** – Guaranteed


NEW ENGLAND
BioLabs[®] Inc.
enabling technologies in the life sciences

CLONING & MAPPING

DNA AMPLIFICATION
& PCR

RNA ANALYSIS

PROTEIN EXPRESSION &
ANALYSIS

GENE EXPRESSION
& CELLULAR ANALYSIS

www.neb.com

Congratulations to Elizabeth H. Blackburn for her Nobel Prize in Physiology or Medicine 2009

with Carol W. Greider and Jack W. Szostak.



★ BETC EuroRSCG Photo: Michéline Pelletier

The L'Oréal Foundation
is pleased to congratulate
Elizabeth H. Blackburn,
who received the 2008
L'Oréal-UNESCO Award
For Women in Science.

FOR WOMEN IN SCIENCE



United Nations
Educational, Scientific and
Cultural Organization

L'ORÉAL
FONDATION
D'ENTREPRISE

SCIENCE NEEDS WOMEN

www.forwomeninscience.com

Congratulations to Ada E. Yonath for her Nobel Prize in Chemistry 2009

with Venkatraman Ramakrishnan and Thomas A. Steitz.

The L'Oréal Foundation
is pleased to congratulate
Ada E. Yonath,
who received the 2008
L'Oréal-UNESCO Award
For Women in Science.

FOR WOMEN IN SCIENCE



L'ORÉAL
FONDATION
D'ENTREPRISE

SCIENCE NEEDS WOMEN

www.forwomeninscience.com

MBL

Biological Discovery in Woods Hole

Founded in 1888 as the Marine Biological Laboratory

Substantial financial assistance is available for many of our courses!

2010 Courses

Analytical & Quantitative Light Microscopy
May 5 - May 14

Biology of Parasitism: Modern Approaches
June 11 - July 31

BioMedical Informatics
1st Session: May 30 - June 6
2nd Session: September 19 - September 26

Embryology: Concepts & Techniques in Modern Developmental Biology
June 12 - July 25

Frontiers in Reproduction: Molecular & Cellular Concepts & Applications
May 1 - June 13

Frontiers in Stem Cells and Regeneration
October 3 - October 9

Fundamental Issues in Vision Research
August 8 - August 21

Gene Regulatory Networks for Development
October 12 - October 23

Methods in Computational Neuroscience
August 1 - August 29

Microbial Diversity
June 12 - July 29

Molecular Biology of Aging
July 25 - August 14

Molecular Mycology: Current Approaches to Fungal Pathogenesis
August 4 - August 20

Neural Systems & Behavior
June 5 - August 1

Neurobiology
June 5 - August 8

Neuroinformatics
August 14 - August 29

Optical Microscopy & Imaging in the Biomedical Sciences
October 5 - October 14

Physiology: Cell & Computational Biology
June 12 - August 1



Summer Program in Neuroscience, Ethics, & Survival (SPINES)
June 12 - July 10

Workshop on Molecular Evolution
July 25 - August 6

Zebrafish Development & Genetics
August 8 - August 22

FOR MORE INFORMATION CONTACT:

Admissions Coordinator;
admissions@mbl.edu;
(508) 289-7401
MBL, 7 MBL Street,
Woods Hole, MA 02543

The MBL is an Equal Opportunity/Affirmative Action Institution.

www.MBL.edu/education

A new weekly journal integrating science and clinical medicine



**A new journal
from *Science***

Sitewide access available
for your institution today.
Contact STM@aaas.org
or call 866-265-4152

Science Translational Medicine

Introducing *Science Translational Medicine*, a new, weekly journal from AAAS focused on applications of basic research knowledge to improve human health.

The goal of *Science Translational Medicine* is simple: help the scientific community harness decades of progress in research at the basic level and translate these biological discoveries into medical advances.

Science Translational Medicine publishes:

- Peer-reviewed primary research papers
- Perspectives and reviews on research from basic science and clinical viewpoints
- Survey of recent literature and findings in other journals
- Commentary on policy, funding, regulatory issues, and more

As a AAAS member, add *Science Translational Medicine* access for over 60% off of the regular price. Subscribe in any of these ways:

- go to ScienceTranslationalMedicine.org
- call 202-326-6417
- mail or fax this form with your payment to 202-842-1065



ScienceTranslationalMedicine.org

Subscribe now **Yes, I want a one-year subscription to *Science Translational Medicine*.**

**AAAS member price – US\$50 online only;
US\$205 print and online** (add US\$50 for non-US delivery)
AAAS membership number required _____

**Nonmember price – US\$150 online only;
US\$450 print and online** (add US\$50 for non-US delivery)

Name _____

Address _____

City _____

State/Province _____

Zip/Postal Code _____

Country _____

E-mail _____
(required for subscription activation)

Phone _____

Payment

Check (payable to AAAS – *Science Translational Medicine*)

Mail check and this form to:
AAAS

Attn: Membership Department
1200 New York Avenue, NW
Washington, DC 20005

Charge my:

VISA MasterCard American Express

Card Number _____

Expiration Date _____

Signature _____

Date _____

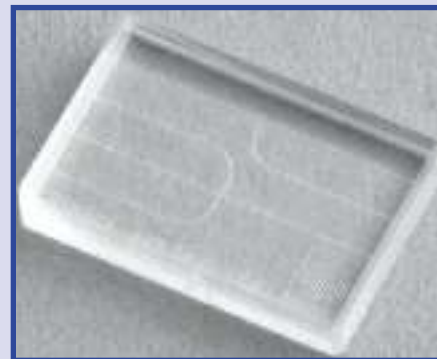
If paying by credit card, you may FAST FAX your order to
202-842-1065 (US) or +44 (0) 1223 326 535 (outside US)

Microfluidic Device

The Mitos Droplet Junction Chip is a glass microfluidic device for droplet generation. With two droplet junctions, the chip is able to produce a high droplet yield while maintaining consistency in size. Compatible with the Mitos Chip Holder H for fast and reliable fluidic connection, the droplet junction chip is suitable for monodispersed droplet formation as well as emulsion formulation. Depending on several physical parameters, such as channel size, fluid viscosity, and miscibility, droplets are typically formed with a diameter from 80–120 μm . Between 100 and 3,000 droplets per second can be produced in a single channel. Droplet consistency is easily maintained throughout an application, for steady and reliable data.

[Dolomite](#)

For information +44-1763-242491
www.dolomite-microfluidics.com



GPCR Service

The AllostericProfiler service is aimed at researchers developing new drugs using G protein-coupled receptors (GPCRs). The service provides drug developers with cell-based assays to evaluate the functional selectivity of drugs against GPCRs. Although 40 percent of all marketed drugs are targeted to GPCRs, the similarity of GPCR binding sites coupled with saturated intellectual property around this chemical space have hampered GPCR drug discovery efforts. Increasingly, drug makers are instead focusing on novel allosteric GPCR sites to open up new chemical spaces, and this service is designed to help in that effort. The service allows researchers to screen the selectivity of their allosteric compounds for more than 150 GPCRs. Millipore can also provide custom services to help researchers identify new positive allosteric modulators of a GPCR target of interest.

[Millipore](#)

For information 800-548-7853
www.millipore.com/gpcr

Water Purification System

The Purelab flex Water Purification System combines contemporary design, performance, and flexibility. The system integrates in-hand monitoring and accurate pure water dispensing to make specialized applications in chemistry and life sciences research effortless. The hand-held dispenser has an easy-to-read digital display that shows both volume and water purity (either resistivity or conductivity and total organic carbon). The handset has precise fingertip control and requires minimal training to use. The dispenser is height-adjustable and the dispense point can be positioned to accommodate virtually any size of container.

[Veolia Water Solutions & Technologies](#)

For information +44-1494-887-500
www.purelabflex.com

2-D Electrophoresis Products

A suite of ready-to-use products is designed to improve data quality for two-dimensional (2D) electrophoresis experiments and to reduce costs and time for protein expression analysis. The products are fully compatible within differential in-gel electrophoresis (DIGE). The products include precast low fluorescent DIGE Gels and DIGE

Buffer Kit that improve gel-to-gel reproducibility; repackaged CyDye DIGE Fluo saturation and minimal dyes that better suit experimental designs; and reformulated immobilized pH gradient (IPG) buffer and IPG strips (Immobiline DryStrip gels) that improve spot resolution. These augment previously released 2-D Protein Extraction Buffers, IPGBox and DeCyder 2-D v7 software, which contribute to error reduction and optimization of the results in the 2D experimental workflow.

[GE Healthcare](#)

For information 800-526-3593
www.gelifesciences.com/2DE

Mouse Antibody Isotyping

Using the Pierce Rapid ELISA Mouse mAB Isotyping Kit, researchers can identify mouse immunoglobulin class, subclass, and light chain in about one hour. This rapid protocol is faster than traditional enzyme-linked immunosorbent assay (ELISA) kits but maintains a high signal-to-noise ratio. The assay accurately characterizes antibodies from hybridoma cell culture supernatants and ascites fluid, as well as purified antibodies. The kit features an eight-well strip format, with individual wells precoated with antimouse heavy-chain capture antibody or antimouse light-chain capture antibody. This eliminates the need to purify and immobilize an antigen for isotyping. Results can be assessed visually or measured quantitatively at 450 nm using a standard ELISA plate reader.

[Thermo Fisher Scientific](#)

For information 815-968-0747
www.thermo.com/pierce

High Throughput Screening Library

BioFocus DPI has added 350,000 new compounds to its screening library, so its high throughput screening platform now includes more than 900,000 unique compounds. The new compounds were selected to complement the existing library, applying stringent lead-likeness criteria in the selection process. The updated screening library allows customers to select optimal screening sets for hit-finding campaigns.

[BioFocus DPI](#)

For information +44-(0)-1799-533500
www.biofocusdpi.com

Electronically submit your new product description or product literature information! Go to www.sciencemag.org/products/newproducts.dtl for more information.

Newly offered instrumentation, apparatus, and laboratory materials of interest to researchers in all disciplines in academic, industrial, and governmental organizations are featured in this space. Emphasis is given to purpose, chief characteristics, and availability of products and materials. Endorsement by *Science* or AAAS of any products or materials mentioned is not implied. Additional information may be obtained from the manufacturer or supplier.

The Evolution of Gift Giving



For them: *Science* and full AAAS benefits.
For you: a special gift rate and our new holiday shirt!

\$99 Professional gift rate (reg. \$146)
\$50 Postdoc/Student gift rate (reg. \$99/\$75)



Make the holidays happier for a promising young researcher, family member, friend, or student. *Science* is the gift that lasts all year—and includes all the benefits of membership in AAAS.

Get a FREE limited-edition holiday shirt.
With its playful image of Darwin and

“¡Viva la Evolución!” attitude, the shirt has been a big hit in basic black. Now it can be yours in cheerful holiday red.

You’ll enjoy something else as well: the satisfaction of helping to support AAAS and our international, public policy, and educational programs—the ones that advance science and serve society. Happy holidays, indeed!

**Order now: visit promo.aaas.org/darwinholiday
or call 866-434-2227.**



**A \$22.50 value—
yours FREE when you
give *Science*!**

Here's to
another 200 years
of evolutionary
thinking.

Science

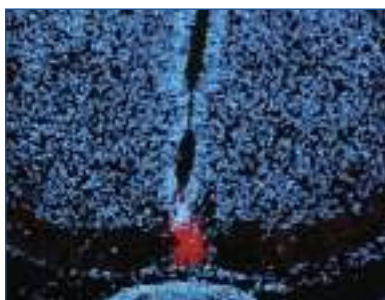
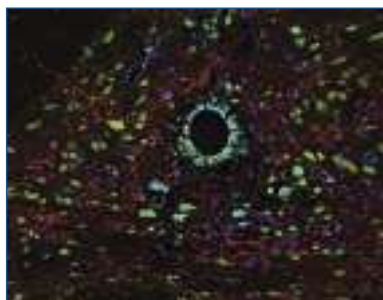
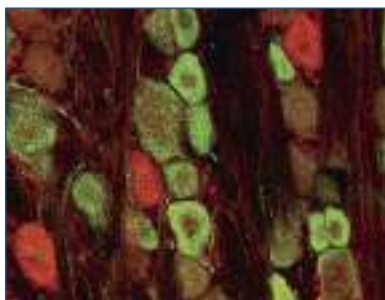
Detail on back

Please order at least two weeks before the holiday you’re celebrating, so we have time to send your gift recipient a letter announcing your gift. Non-U.S. recipients may receive *Science* Digital edition at the special gift rate. Check online for print edition rates. \$74 allocated to *Science* for Professional memberships, \$50 for Postdoc/Student memberships. Please allow 4 weeks for receipt of first issue. Prices valid through 1/31/10.

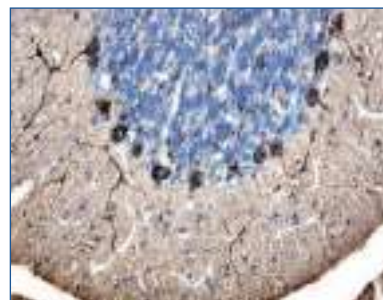
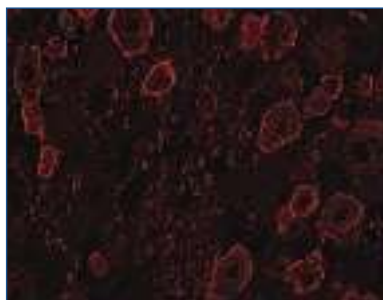
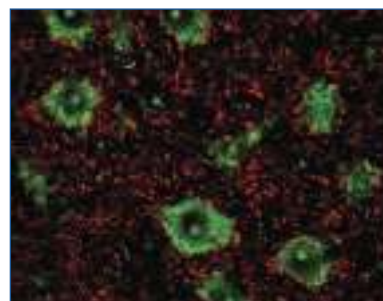
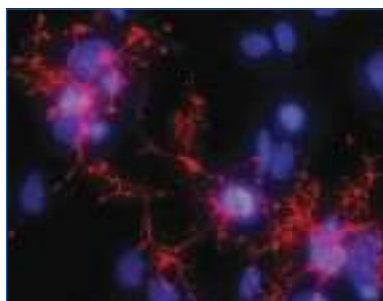
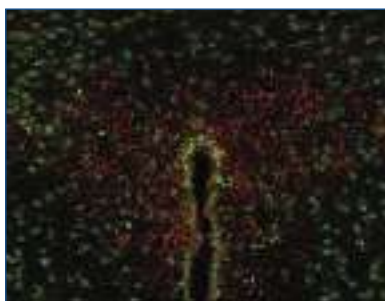
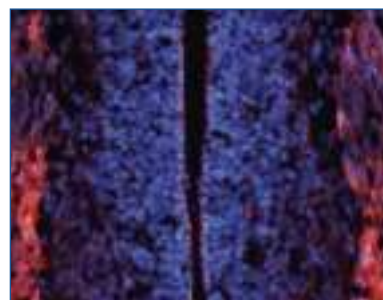


R&D Systems

Antibodies for Neuroscience Research



Simply brilliant.



For research use only. Not for use in diagnostic procedures.

For more information visit our website at www.RnDSystems.com/go/Neuroscience

R&D Systems Tools for Cell Biology Research™

USA & Canada **R&D Systems, Inc.** Tel: (800) 343-7475 info@RnDSystems.com

Europe **R&D Systems Europe, Ltd.** Tel: +44 (0)1235 529449 info@RnDSystems.co.uk

Selection expanding weekly—visit www.RnDSystems.com/go/request to sign up for weekly new product updates.

