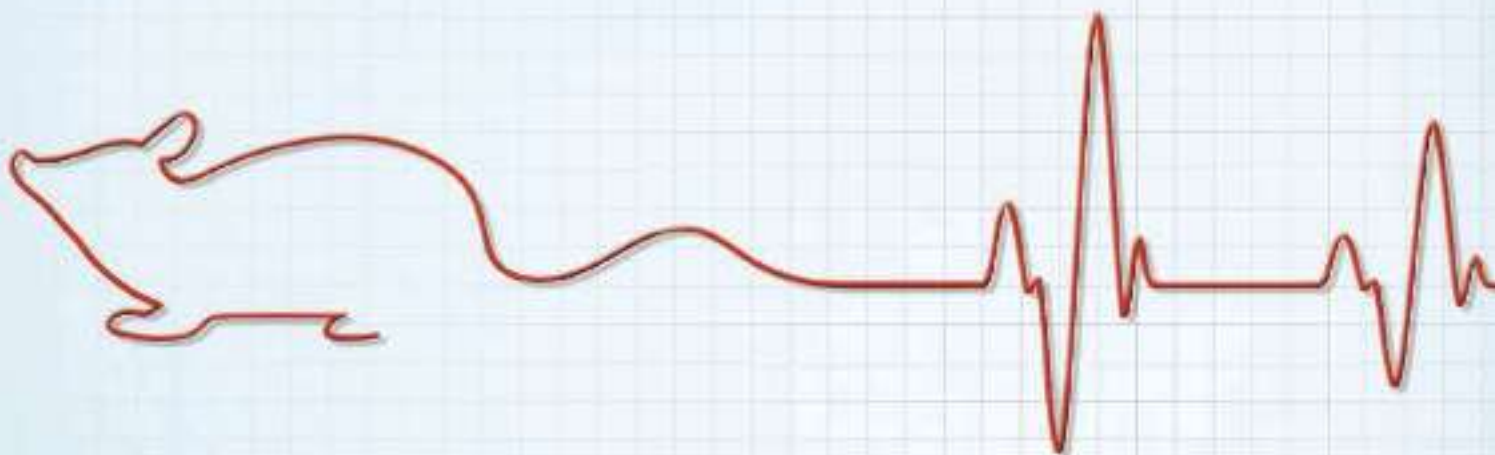


bioengineering

Biovital.

Move your cardio research forward with more predictive, more physiologically relevant research models from SAGE® Labs.



Featuring the **ApoE**, **Leptin** and **Ldlr** knockout rat models, the Cardio Suite from SAGE Labs is designed to support the study of cardiovascular disease, obesity, diabetes, atherosclerosis, and more.

Explore our collection of knockout rat models at sageresearchmodels.com

SAGE LABS
Sigma Advanced
Genetic Engineering

©2012 Sigma-Aldrich Co. LLC. All rights reserved. SIGMA and SIGMA-ALDRICH are trademarks of Sigma-Aldrich Co. LLC, registered in the US and other countries. SAGE is a registered trademark of Sigma-Aldrich Co. LLC. Where bio begins is a trademark of Sigma-Aldrich Co. LLC.

SIGMA-ALDRICH®

SIGMA Where *bio* begins™
Life Science