



NEWS

IN BRIEF

1208 Roundup of the week's news

IN DEPTH

1211 CARBON-MAPPING SATELLITE WILL MONITOR PLANTS' FAINT GLOW

Launch of Orbiting Carbon Observatory-2 promises precise mapping of chlorophyll fluorescence from space *By E. Hand*

1212 POLIO ERADICATORS STRUGGLE TO PREVENT THE NEXT OUTBREAK

A new "Red List" identifies where the virus may strike next *By L. Roberts*

1213 RACING FOR DISASTER?

Breeding thoroughbred horses for speed may damage their health *By A. Gibbons*

1215 STAP CELLS SUCCUMB TO PRESSURE

Retraction plans for easy stem cell recipe leave scientists wondering what went wrong *By D. Normile and G. Vogel*

1216 DINOSAUR METABOLISM NEITHER HOT NOR COLD, BUT JUST RIGHT

Growth rates suggest dinosaurs were "mesothermic" *By M. Balter*

► REPORT P. 1268

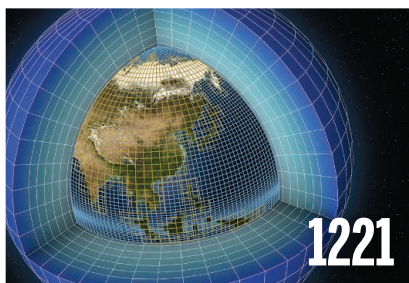
1217 LEGAL HIGHS MAKE URUGUAY A BEACON FOR MARIJUANA RESEARCH

New lab aims to study the biochemistry and medical uses of the drug *By L. Wade*

FEATURES

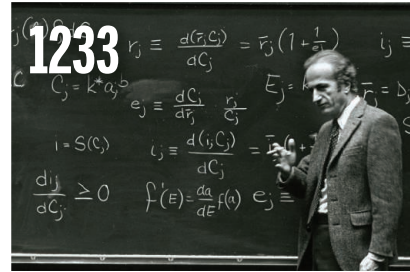
1218 MISSION TO MERS

A massive study in camels and people is yielding the best data yet on how a new virus spreads *By M. Enserink*



1221 A TOUCH OF THE RANDOM

Some researchers are calling for a fresh, statistics-based approach to climate modeling *By C. Macikwain*



INSIGHTS

PERSPECTIVES

1224 THE QUANTUM NONDEMOLITION DERBY

Monitored resonators can evade back-action from shot noise in the detection laser *By D. Bouwmeester*

► REPORT P. 1262

1226 MOLECULAR BASIS OF TRANSCRIPTION PAUSING

RNA polymerase progression is regulated by a ubiquitous DNA consensus sequence to mediate RNA utilization *By J. W. Roberts*

► REPORT P. 1285

1228 A SALTY START TO MODERN OCEAN CIRCULATION

Water flow out of the Mediterranean is linked to large-scale ocean circulation patterns *By G. Filippelli*

► RESEARCH ARTICLE P. 1244

1229 IT HELPS TO BE WELL CONNECTED

Highly connected populations of the weedy plant *Plantago* are less likely to be colonized by a fungal pathogen

By M. A. Duffy

► REPORT P. 1289

1230 MEASURING THE PATH TOWARD MALARIA ELIMINATION

Developing new targets and milestones from standard surveillance data *By T. S. Churcher et al.*

1233 GARY BECKER (1930–2014)

An economist used sociology and economics to examine life and explain human behavior

By E. L. Glaeser and A. Shleifer

BOOKS ET AL.

1234 HOMOLOGY, GENES, AND EVOLUTIONARY INNOVATION

By G. P. Wagner,

reviewed by C. Simpson and D. H. Erwin

1235 THE HIDDEN MECHANICS OF EXERCISE

By C. M. Gillen,

reviewed by S. D. R. Harridge

LETTERS

1236 MAKING WAVES ABOUT SPREADING WEEDS

By L. A. Meyerson et al.

1236 RESPONSE

By D. S. Johnson

1236 POSTED ONLINE: IMMUNOTHERAPY

1237 TECHNICAL COMMENT ABSTRACTS

DEPARTMENTS

1207 EDITORIAL

Time to speak up for research

By John Edward Porter



1314 WORKING LIFE

The fun of science

By Cathy Walker

Science Staff	1204
New Products	1301
Science Careers	1302

CONTENTS



1229 & 1289

Epidemiological dynamics in a fungal-plant system

13 JUNE 2014 • VOLUME 344 • ISSUE 6189

RESEARCH

IN BRIEF

1238 From *Science* and other journals

REVIEW

1243 STEM CELL PLASTICITY

Plasticity of epithelial stem cells in tissue regeneration

C. Blanpain and E. Fuchs

REVIEW SUMMARY; FOR FULL TEXT:

[HTTP://DX.DOI.ORG/10.1126/SCIENCE.1242281](http://dx.doi.org/10.1126/SCIENCE.1242281)

RESEARCH ARTICLES

1244 PALEOCEANOGRAPHY

Onset of Mediterranean outflow into the North Atlantic

F. J. Hernández-Molina et al.

► PERSPECTIVE P. 1228

1250 NEURONAL REPAIR

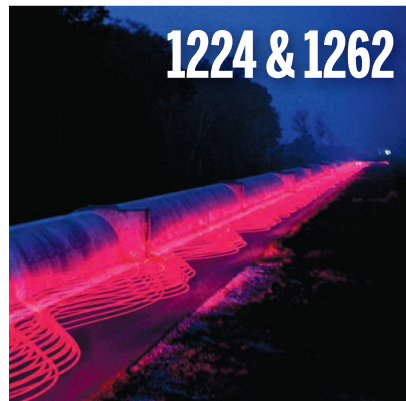
Asynchronous therapy restores motor control by rewiring of the rat corticospinal tract after stroke

A. S. Wahl et al.

REPORTS

1256 QUANTUM NONLOCALITY

Detecting nonlocality in many-body quantum states *J. Tura et al.*



1259 QUANTUM GASES

Observation of many-body dynamics in long-range tunneling after a quantum quench *F. Meinert et al.*

1262 QUANTUM MECHANICS

Mechanically detecting and avoiding the quantum fluctuations of a microwave field *J. Suh et al.*

► PERSPECTIVE P. 1224

1265 EARTH'S INTERIOR

Dehydration melting at the top of the lower mantle *B. Schmandt et al.*

1268 DINOSAUR PHYSIOLOGY

Evidence for mesothermy in dinosaurs *J. M. Grady et al.*

► NEWS STORY P. 1216

1272 NONHUMAN GENETICS

Strong male bias drives germline mutation in chimpanzees *O. Venn et al.*

1275 NEURAL MIGRATION

Structures of netrin-1 bound to two receptors provide insight into its axon guidance mechanism *K. Xu et al.*

1280 HUMAN GENETICS

The genetics of Mexico recapitulates Native American substructure and affects biomedical traits *A. Moreno-Estrada et al.*

► PODCAST

1285 TRANSCRIPTION

Interactions between RNA polymerase and the “core recognition element” counteract pausing

I. O. Vvedenskaya et al.

► PERSPECTIVE P. 1226

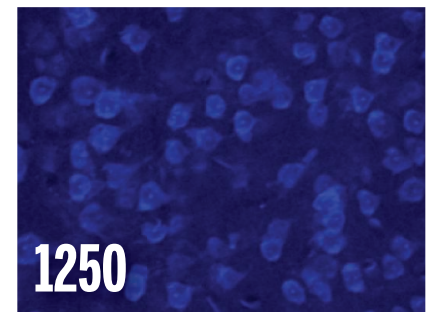
1289 DISEASE ECOLOGY

Ecological and evolutionary effects of fragmentation on infectious disease dynamics *J. Jousimo et al.*

► PERSPECTIVE P. 1229

1293 COMPARATIVE BEHAVIOR

Anxiety-like behavior in crayfish is controlled by serotonin *P. Fossat et al.*



ON THE COVER



Immunofluorescence microscopy image of squamous cell carcinoma (SCC). SCCs contain tumor-initiating stem cells and their early progeny, which, like normal cells, reside along the tumor-stroma interface and express high levels of integrins (white) and progenitor keratins (green). Stem cells with high tumor-initiating capacity are shown in red; nuclear DNA is in blue. Average cell size within the tumor, 10 micrometers. See page 1243 and <http://dx.doi.org/10.1126/science.1242281>. Image: Courtesy of Markus Schober and Elaine Fuchs [see Proc. Natl. Acad. Sci. U.S.A. **108**, 10544–10549 (2011)]

SCIENCE (ISSN 0036-8075) is published weekly on Friday, except the last week in December, by the American Association for the Advancement of Science, 1200 New York Avenue, NW, Washington, DC 20005. Periodicals mail postage (publication No. 484460) paid at Washington, DC, and additional mailing offices. Copyright © 2014 by the American Association for the Advancement of Science. The title SCIENCE is a registered trademark of the AAAS. Domestic individual membership and subscription (51 issues): \$153 (\$74 allocated to subscription). Domestic institutional subscription (51 issues): \$1282; foreign postage extra: Mexico, Caribbean (surface mail) \$55; other countries (air assist delivery) \$85. First class, airmail, student, and emeritus rates on request. Canadian rates with GST available upon request. GST #R1254 88122. Publications Mail Agreement Number 1069624. Printed in the U.S.A. Change of address: Allow 4 weeks, giving old and new addresses and 8-digit account number. Postmaster: Send change of address to AAAS, P.O. Box 96178, Washington, DC 20090-6178. Single-copy sales: \$10.00 current issue, \$15.00 back issue prepaid includes surface postage; bulk rates on request. Authorization to photocopy material for internal or personal use under circumstances not falling within the fair use provisions of the Copyright Act is granted by AAAS to libraries and other users registered with the Copyright Clearance Center (CCC) Transactional Reporting Service, provided that \$30.00 per article is paid directly to CCC, 222 Rosewood Drive, Danvers, MA 01923. The identification code for Science is 0036-8075. Science is indexed in the Reader's Guide to Periodical Literature and in several specialized indexes.

Science

344 (6189)

Science **344** (6189), 1207-1314.

ARTICLE TOOLS

<http://science.sciencemag.org/content/344/6189>

PERMISSIONS

<http://www.sciencemag.org/help/reprints-and-permissions>

Use of this article is subject to the [Terms of Service](#)

Science (print ISSN 0036-8075; online ISSN 1095-9203) is published by the American Association for the Advancement of Science, 1200 New York Avenue NW, Washington, DC 20005. 2017 © The Authors, some rights reserved; exclusive licensee American Association for the Advancement of Science. No claim to original U.S. Government Works. The title *Science* is a registered trademark of AAAS.