

CONTENTS



828 & 857

Clocking light in the slow lane

20 FEBRUARY 2015 • VOLUME 347 • ISSUE 6224



818

NEWS

IN BRIEF

808 Roundup of the week's news

IN DEPTH

812 DROUGHT TRIGGERS ALARMS IN BRAZIL'S BIGGEST METROPOLIS

Water shortages blamed on climate anomaly, tardy response *By H. Escobar*

813 DAWN PROBE TO LOOK FOR A HABITABLE OCEAN ON CERES

Asteroid belt's largest body to yield its icy secrets to NASA orbiter, due to arrive next month *By E. Hand*

814 INDO-EUROPEAN LANGUAGES TIED TO HERDERS

Ancient migration from the east shaped European genome and language *By M. Balter and A. Gibbons*

817 NIH PLOTS MILLION-PERSON MEGASTUDY

Questions abound as researchers discuss personalized medicine project *By J. Kaiser*

FEATURE

818 ARCTIC IMPACT

Is the melting Arctic really bringing frigid winters to North America and Eurasia? Scientists struggle to piece together an atmospheric puzzle

By C. Gramling

..... **821 The Siberian snow connection**

By C. Gramling

INSIGHTS

PERSPECTIVES

822 MOTHERS SHAPE ECOLOGICAL COMMUNITIES

Individual hormonal responses affect the distributions and abundances of bird species *By B. Dantzer*

▶ REPORT P. 875

824 THE DARK SIDE OF SUNLIGHT AND MELANOMA

UV-initiated DNA photodamage in melanocytes is found to continue in the dark *By J.-S. Taylor*

▶ RESEARCH ARTICLE P. 842

825 CAN OXYTOCIN TREAT AUTISM?

We are still at an early stage of assessing oxytocin-based therapy for autism spectrum disorders *By L. J. Young and C. E. Barrett*

826 PANCREAS MICROMANAGES AUTOPHAGY

Nutrient-sensing β cells degrade insulin when blood glucose is low *By G. A. Rutter*

▶ REPORT P. 878

828 STRUCTURED PHOTONS TAKE IT SLOW

Specially prepared single photons travel below the "speed of light," even in vacuum *By J. R. Sambles*

▶ REPORT P. 857

829 CLIMBING JACOB'S LADDER

Protein design enables the stabilization of a transient molecular state *By D. K. Romney and S. J. Miller*

▶ REPORT P. 863

830 COPING WITH EARTHQUAKES INDUCED BY FLUID INJECTION

Hazard may be reduced by managing injection activities *By A. McGarr et al.*

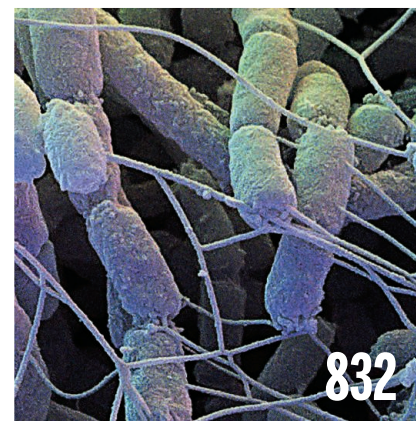
BOOKS ET AL.

832 PHILOSOPHY OF MICROBIOLOGY

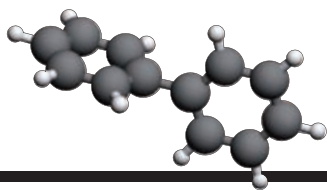
By M. A. O'Malley, reviewed by A. Woolfson

833 HALF-LIFE

By F. Close, reviewed by A. Wellerstein

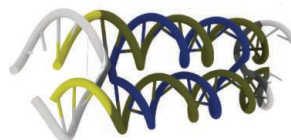


Science Staff	806
New Products	887
Gordon Research Conferences	888
Science Careers	913



829 & 863

Setting a trap for a transition state



840

Leveraging DNA for materials design

LETTERS

834 EDITORIAL RETRACTION

By M. McNutt

834 PETA FUELS ANIMAL LAB IMPROVEMENTS

By J. Pawlowski

834 PETA UNDERMINES SCIENCE AND SCIENTISTS

By F. L. Trull

834 ENFORCEMENT KEY TO CHINA'S ENVIRONMENT

By H. Yang et al.

835 TECHNICAL COMMENT ABSTRACTS

RESEARCH

IN BRIEF

836 From *Science* and other journals

REVIEW

840 NANOMATERIALS

Programmable materials and the nature of the DNA bond M. R. Jones et al.

REVIEW SUMMARY; FOR FULL TEXT: dx.doi.org/10.1126/science.1260901

RESEARCH ARTICLES

841 DISEASE NETWORKS

Uncovering disease-disease relationships through the incomplete interactome J. Menche et al.

RESEARCH ARTICLE SUMMARY; FOR FULL TEXT: dx.doi.org/10.1126/science.1257601

842 PHOTOCHEMISTRY

Chemiexcitation of melanin derivatives induces DNA photoproducts long after UV exposure S. Premi et al.

► PERSPECTIVE P. 824

847 STRUCTURAL BIOLOGY

Structural basis for Notch1 engagement of Delta-like 4 V. C. Luca et al.

REPORTS

853 QUANTUM ENGINEERING

Confining the state of light to a quantum manifold by engineered two-photon loss Z. Leghtas et al.

857 OPTICS

Spatially structured photons that travel in free space slower than the speed of light

D. Giovannini et al.

► PERSPECTIVE P. 828

860 GALAXY EVOLUTION

Black hole feedback in the luminous quasar PDS 456 E. Nardini et al.

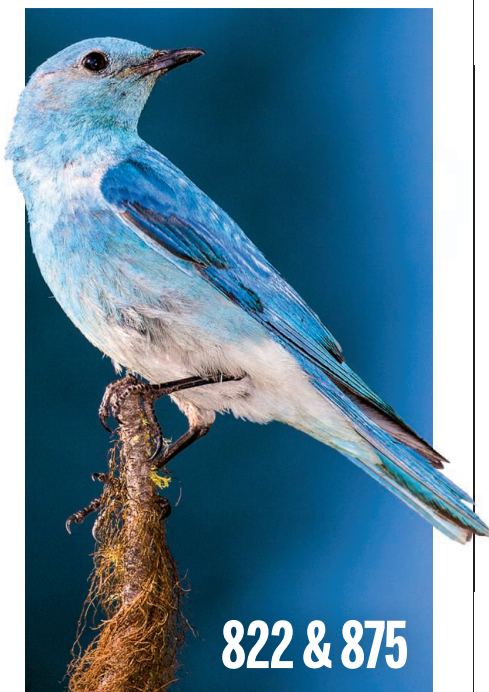
863 TRANSITION STATES

Trapping a transition state in a computationally designed protein bottle A. D. Pearson et al.

► PERSPECTIVE P. 829

867 ANIMAL EVOLUTION

Cope's rule in the evolution of marine animals N. A. Heim et al.



870 SPATIAL NAVIGATION

Disruption of the head direction cell network impairs the parahippocampal grid cell signal S. S. Winter et al.

875 EVOLUTIONARY ECOLOGY

Cycles of species replacement emerge from locally induced maternal effects on offspring behavior in a passerine bird R. A. Duckworth et al.

► PERSPECTIVE P. 822; PODCAST

878 INSULIN GRANULES

Insulin secretory granules control autophagy in pancreatic β cells A. Goginashvili et al.

► PERSPECTIVE P. 826

882 KINASE DYNAMICS

Using ancient protein kinases to unravel a modern cancer drug's mechanism C. Wilson et al.

DEPARTMENTS

807 EDITORIAL

Why science? Why AAAS?

By Rush D. Holt

918 WORKING LIFE

A career's twisting road

By Richard Dasheiff

ON THE COVER



Sea slugs like the Spanish shawl nudibranch (*Flabellina iodinea*) are model systems for helping us to understand neural circuits, cellular properties of neurons, neuromodulation,

learning, memory, and behavioral evolution. The Gordon Research Seminar (GRS) on Neuroethology will be held 28 June to 3 July 2015 in Barga, Italy. See page 888 for the Gordon Research Conference schedule and preliminary programs. *Photo: Charuni Gunaratne, Chair, 2015 Neuroethology: Behavior, Evolution & Neurobiology GRS; and Georgia State University*

SCIENCE (ISSN 0036-8075) is published weekly on Friday, except the last week in December, by the American Association for the Advancement of Science, 1200 New York Avenue, NW, Washington, DC 20005. Periodicals mail postage (publication No. 484460) paid at Washington, DC, and additional mailing offices. Copyright © 2015 by the American Association for the Advancement of Science. The title SCIENCE is a registered trademark of the AAAS. Domestic individual membership and subscription (51 issues): \$153 (\$74 allocated to subscription). Domestic institutional subscription (51 issues): \$1282. Foreign postage extra: Mexico, Caribbean (surface mail) \$55; other countries (air assist delivery) \$85. First class, airmail, student, and emeritus rates on request. Canadian rates with GST available upon request. GST #R1254 88122. Publications Mail Agreement Number 1069624. Printed in the U.S.A. **Change of address:** Allow 4 weeks, giving old and new addresses and 8-digit account number. **Postmaster:** Send change of address to AAAS, P.O. Box 96178, Washington, DC 20090-6178. **Single copy sales:** \$10.00 current issue, \$15.00 back issue prepaid includes surface postage; bulk rates on request. **Authorization to photocopy** material for internal or personal use under circumstances not falling within the fair use provisions of the Copyright Act is granted by AAAS to libraries and other users registered with the Copyright Clearance Center (CCC) Transactional Reporting Service, provided that \$30.00 per article is paid directly to CCC, 222 Rosewood Drive, Danvers, MA 01923. The identification code for Science is 0036-8075. Science is indexed in the Reader's Guide to Periodical Literature and in several specialized indexes.

Science

347 (6224)

Science **347** (6224), 807-918.

ARTICLE TOOLS

<http://science.sciencemag.org/content/347/6224>

PERMISSIONS

<http://www.sciencemag.org/help/reprints-and-permissions>

Use of this article is subject to the [Terms of Service](#)

Science (print ISSN 0036-8075; online ISSN 1095-9203) is published by the American Association for the Advancement of Science, 1200 New York Avenue NW, Washington, DC 20005. 2017 © The Authors, some rights reserved; exclusive licensee American Association for the Advancement of Science. No claim to original U.S. Government Works. The title *Science* is a registered trademark of AAAS.