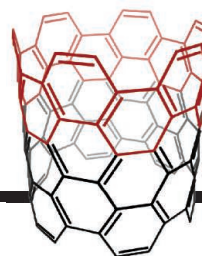


CONTENTS

14 APRIL 2017 • VOLUME 356 • ISSUE 6334



135 & 172

Carbon belt



121, 132, & 155

NEWS

IN BRIEF

116 News at a glance

IN DEPTH

118 ON EVE OF SCIENCE MARCH, PLANNERS LOOK AHEAD

March for Science aims to live past 22 April events and serve as a catalyst for advocacy *By L. Wessel*

► VIDEO

119 Why the rest of the world is marching

By Science News Staff

120 CASSINI EMBARKS ON TWILIGHT MISSION AT SATURN

Spacecraft may settle debate on rings' mass and age before its fiery end

By P. Voosen

121 Food for microbes abundant on Enceladus

By P. Voosen

► PERSPECTIVE P. 132; RESEARCH ARTICLE P. 155

122 PERSONALIZED TUMOR VACCINES KEEP CANCER IN CHECK

A new approach enlists a tumor's own mutated proteins *By J. Kaiser*

123 U.S. REPORT CALLS FOR RESEARCH INTEGRITY BOARD

Independent body would help foster good behavior and better investigations *By J. Mervis*

124 GIANT RADIO TELESCOPE FACES DOWNSIZING

Rising costs squeeze the first phase of the Square Kilometer Array and threaten planned studies *By E. Carlidge*

FEATURES

125 EPIDEMIC INSURANCE

Caught short by Ebola, the world gets ready for the next outbreak *By J. Cohen*

128 THE WEATHER MASTER

How Shian-Jiann Lin's atmospheric grids could unify weather forecasts and climate models *By P. Voosen*

INSIGHTS

PERSPECTIVES

132 DETECTING MOLECULAR HYDROGEN ON ENCELADUS

Cassini spacecraft detects molecular hydrogen on one of Saturn's moons

By J. S. Seewald

► NEWS STORY P. 121; RESEARCH ARTICLE P. 155

133 AN AI STEREOTYPE CATCHER

An artificial intelligence method identifies implicit human biases such as gender stereotypes *By A. G. Greenwald*

► REPORT P. 183

135 ALLOTROPY BY DESIGN—CARBON NANOHOOPS

The shortest armchair carbon nanotube has been synthesized and crystallized *By J. S. Siegel*

► REPORT P. 172

136 EATING ECOSYSTEMS

Wildlife harvest and depletion compromise socioecological stability

By J. S. Brashares and K. M. Gaynor

► REPORT P. 180

137 EMBRYOGENESIS IN A DISH

We are at an early stage of developing embryos from stem cells in culture *By M. Pera*

► RESEARCH ARTICLE P. 153

139 MANAGING CELL AND HUMAN IDENTITY

Will powerful new technologies affect our perception of self-identity?

By J. Moreno et al.

POLICY FORUM

141 TERAWATT-SCALE PHOTOVOLTAICS: TRAJECTORIES AND CHALLENGES

Coordinating technology, policy, and business innovations

By N. M. Haegel et al.

BOOKS ET AL.

144 EMBRACING THE UNQUALIFIED OPINION

A pair of timely tomes probes the factors converging to undermine the expertise of scientists, scholars, and trained professionals

By S. Kirshenbaum

146 A RIVER RUNS THROUGH IT

A meandering history probes the Colorado River's verdant legacy and fraught future *By K. C. Rose*

LETTERS

147 AFTER CHILE'S FIRES, REFOREST PRIVATE LAND

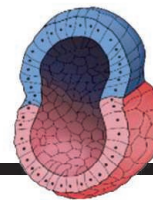
By M. J. Martinez-Harms et al.

147 OUTSIDE THE TOWER MARCH FOR SCIENCE: SHARE YOUR SIGN

148 EUROPE'S INSUFFICIENT POLLUTANT REMEDIATION

By R. J. Law and P. D. Jepson

CONTENTS



137 & 153

Toward a synthetic embryo

14 APRIL 2017 • VOLUME 356 • ISSUE 6334

RESEARCH

IN BRIEF

149 From *Science* and other journals

REVIEW

152 ORGANIC CHEMISTRY

Transition metal-catalyzed alkyl-alkyl bond formation: Another dimension in cross-coupling chemistry

J. Choi and G. C. Fu

REVIEW SUMMARY; FOR FULL TEXT:
[dx.doi.org/10.1126/science.aaf7230](https://doi.org/10.1126/science.aaf7230)

RESEARCH ARTICLES

153 DEVELOPMENTAL BIOLOGY

Assembly of embryonic and extraembryonic stem cells to mimic embryogenesis in vitro

S. E. Harrison et al.

RESEARCH ARTICLE SUMMARY; FOR FULL TEXT:
[dx.doi.org/10.1126/science.aal1810](https://doi.org/10.1126/science.aal1810)

► PERSPECTIVE P. 137

154 NATURAL HAZARDS

Complex multifault rupture during the 2016 M_w 7.8 Kaikōura earthquake, New Zealand

I. J. Hamling et al.
RESEARCH ARTICLE SUMMARY; FOR FULL TEXT:
[dx.doi.org/10.1126/science.aam7194](https://doi.org/10.1126/science.aam7194)

155 PLANETARY GEOLOGY

Cassini finds molecular hydrogen in the Enceladus plume: Evidence for hydrothermal processes

J. H. Waite et al.
► NEWS STORY P. 121;
PERSPECTIVE P. 132; VIDEO

REPORTS

159 ORGANIC ELECTRONICS

High-performance light-emitting diodes based on carbene-metal-amides

D. Di et al.

163 GEOPHYSICS

Imaging the distribution of transient viscosity after the 2016 M_w 7.1 Kumamoto earthquake

J. D. P. Moore et al.



136 & 180

167 SOLAR CELLS

Colloidally prepared La-doped BaSnO₃ electrodes for efficient, photostable perovskite solar cells

S. S. Shin et al.

172 ORGANIC CHEMISTRY

Synthesis of a carbon nanobelt

G. Povie et al.

► PERSPECTIVE P. 135

175 ZIKA VIRUS

Enhancement of Zika virus pathogenesis by preexisting antinflavivirus immunity

S. V. Bardina et al.

180 DEFAUNATION

The impact of hunting on tropical mammal and bird populations

A. Benítez-López et al.

► PERSPECTIVE P. 136

183 COGNITIVE SCIENCE

Semantics derived automatically from language corpora contain human-like biases

A. Caliskan et al.

► PERSPECTIVE P. 133; PODCAST

186 PLANT SCIENCE

The preprophase band of microtubules controls the robustness of division orientation in plants

E. Schaefer et al.

189 SINGLE-CELL GENOMICS

Single-cell whole-genome analyses by Linear Amplification via Transposon Insertion (LIANTI)

C. Chen et al.

194 STRUCTURAL BIOLOGY

Architecture of a transcribing-translating expressome

R. Kohler et al.

197 SIZE CONTROL

Nanoscale-length control of the flagellar driveshaft requires hitting the tethered outer membrane

E. J. Cohen et al.

200 IMMUNOTHERAPY

Landscape of immunogenic tumor antigens in successful immunotherapy of virally induced epithelial cancer

S. Stevanović et al.

205 STRUCTURAL BIOLOGY

Crystal structure of the overlapping dinucleosome composed of hexasome and octasome

D. Kato et al.

DEPARTMENTS

115 EDITORIAL

Research integrity revisited

By Marcia McNutt and Robert M. Nerem

214 WORKING LIFE

Skiing for science

By Daniel T. Blumstein

ON THE COVER



Earthquake uplift across the coastal platform at Waipapa Bay, off New Zealand's South Island. The Papatea fault is one of more than a dozen faults that ruptured during the

2016 Kaikōura earthquake. Observations show this to be one of the most complex earthquakes ever recorded, challenging our assumptions about the degree to which earthquake ruptures are controlled by fault segmentation. See page 154.

Photo: © Andrew Spencer Photography

Science Staff	114
New Products	209
Science Careers	210

SCIENCE (ISSN 0036-8075) is published weekly on Friday, except the last week in December, by the American Association for the Advancement of Science, 1200 New York Avenue, NW, Washington, DC 20005. Periodicals mail postage (publication No. 484460) paid at Washington, DC, and additional mailing offices. Copyright © 2017 by the American Association for the Advancement of Science. The title SCIENCE is a registered trademark of the AAAS. Domestic individual membership and subscription (51 issues): \$165 (\$74 allocated to subscription). Domestic institutional subscription (51 issues): \$1659; Foreign postage extra: Mexico, Caribbean (surface mail) \$55; other countries (air assist delivery) \$89. First class, airmail, student, and emeritus rates on request. Canadian rates with GST available upon request. GST #R1254-88122. Publications Mail Agreement Number 1069624. Printed in the U.S.A. Change of address: Allow 4 weeks, giving old and new addresses and 8-digit account number. Postmaster: Send change of address to AAAS, P.O. Box 96178, Washington, DC 20009-6178. Single-copy sales: \$23.00 current issue, \$28.00 back issue prepaid includes surface postage; bulk rates on request. Authorization to photocopy material for internal or personal use under circumstances not falling within the fair use provisions of the Copyright Act is granted by AAAS to libraries and other users registered with the Copyright Clearance Center (CCC) Transactional Reporting Service, provided that \$35.00 per article is paid directly to CCC, 222 Rosewood Drive, Danvers, MA 01923. The identification code for Science is 0036-8075. Science is indexed in the Reader's Guide to Periodical Literature and in several specialized indexes.

Science

356 (6334)

Science **356** (6334), 115-214.

ARTICLE TOOLS

<http://science.sciencemag.org/content/356/6334>

PERMISSIONS

<http://www.sciencemag.org/help/reprints-and-permissions>

Use of this article is subject to the [Terms of Service](#)

Science (print ISSN 0036-8075; online ISSN 1095-9203) is published by the American Association for the Advancement of Science, 1200 New York Avenue NW, Washington, DC 20005. 2017 © The Authors, some rights reserved; exclusive licensee American Association for the Advancement of Science. No claim to original U.S. Government Works. The title *Science* is a registered trademark of AAAS.