

Science Careers

SCIENCE CAREERS ADVERTISING

For full advertising details, go to ScienceCareers.org and click For Employers, or call one of our representatives.



AMERICAS

+1 202 326-6577
 +1 202 326-6578
 advertise@sciencecareers.org

EUROPE, INDIA, AUSTRALIA, NEW ZEALAND, REST OF WORLD

+44 (0) 1223 326527
 advertise@sciencecareers.org

CHINA, KOREA, SINGAPORE, TAIWAN, THAILAND

+86 131 4114 0012
 advertise@sciencecareers.org

JAPAN

+81 3-6459-4174
 advertise@sciencecareers.org

CUSTOMER SERVICE

AMERICAS

+1 202 326-6577

REST OF WORLD

+44 (0) 1223 326528

advertise@sciencecareers.org

All ads submitted for publication must comply with applicable U.S. and non-U.S. laws. Science Careers reserves the right to refuse any advertisement at its sole discretion for any reason, including without limitation for offensive language or inappropriate content, and all advertising is subject to publisher approval. Science Careers encourages our readers to alert us to any ads that they feel may be discriminatory or offensive.

ScienceCareers

FROM THE JOURNAL SCIENCE AAAS

ScienceCareers.org

POSITIONS OPEN

TENURE TRACK FACULTY POSITION REPRODUCTIVE SCIENCES

The Departments of Physiology and Obstetrics and Gynecology at Wayne State University (WSU) School of Medicine invite applications for a joint tenure-track Assistant/Associate Professor position. We seek well-trained candidates with research interests in reproductive biology applying molecular, cellular, and translational approaches. Start-up package and salary are highly competitive. Physiology is one of the major basic science departments at WSU (<http://physiology.med.wayne.edu>). The Department of Obstetrics and Gynecology, a nationally recognized leader in academic medicine, is the home of the C.S. Mott Center for Human Growth and Development (<http://mott.med.wayne.edu/>). The C.S. Mott Center houses the Perinatology Research Branch of the National Institutes of Child Health and Human Development (NICHD; <http://www.med.wayne.edu/prb/>), the Applied Genomics Technology Center (<http://www.agtc.med.wayne.edu>), and its own vivarium.

This unique opportunity is a part of the Detroit revitalization, a context within which Wayne State University is expected to experience substantial research-intensive growth through the next decade. This growth includes a multi-institutional local initiative and a novel state-wide translational sciences partnership to move our discoveries from the bench to the bedside.

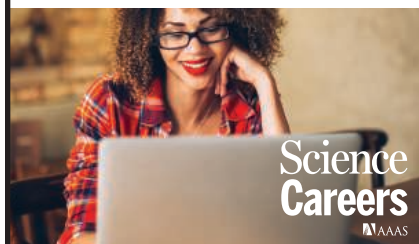
Candidates should hold Ph.D., M.D. or equivalent. The successful candidate is expected to establish active extramurally funded research programs and participate in teaching medical/graduate students. Submit applications to website https://jobs.wayne.edu/applicants/jsp/shared/Welcome_css.jsp, and apply to posting #042687 please include a curriculum vitae, a detailed future research plan, and names/contact information of three references. Review of applications will begin after **May 15, 2017** and continue until the position is filled.

Wayne State University is a premier, public, urban research university located in the heart of Detroit where students from all backgrounds are offered a rich, high quality education. Our deep-rooted commitment to excellence, collaboration, integrity, diversity and inclusion creates exceptional educational opportunities preparing students for success in a diverse, global society. *WSU encourages applications from women, people of color, and other under-represented people. Wayne State is an Affirmative Action/Equal Opportunity Employer.*

Search more jobs online

Access hundreds of job postings on ScienceCareers.org.

Expand your search today.



Science Careers
 AAAS

Advance your career with expert advice from Science Careers.



Download Free Career Advice Booklets!

ScienceCareers.org/booklets

Featured Topics:

- Networking
- Industry or Academia
- Job Searching
- Non-Bench Careers
- And More



Science Careers

FROM THE JOURNAL SCIENCE AAAS