

## COVER

A three-dimensional model of the topological structure of zeolite SSZ-65. The Gordon Research Conference on Nanoporous Materials will be held 15 to 20 June 2008 at Colby College, Waterville, ME. The schedules for the 2008 Gordon Research Conferences begin on page 637.

**Model creation and rendering:**  
Kelly Harvey and Scott Harvey

## DEPARTMENTS

- 543 Science Online
- 545 This Week in *Science*
- 549 Editors' Choice
- 550 Contact *Science*
- 551 Random Samples
- 553 Newsmakers
- 634 2008 Information for Authors
- 636 New Products
- 637 Gordon Research Conferences
- 662 Science Careers

## EDITORIAL

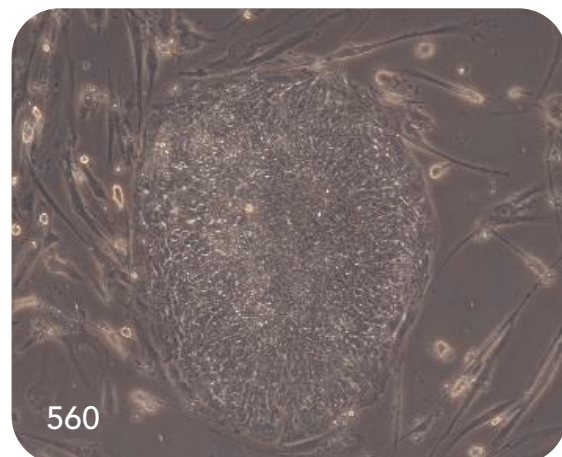
- 548 The Real Debate  
by Donald Kennedy

## NEWS OF THE WEEK

- DOE's Disappointing Budget Makes It Harder to Stick to the Basics 554
- Lancet* and MSF Split Over Malnutrition Series 555
- Indian Government Hopes Bill Will Stimulate Innovation 556
- Dutch Revise Policy Blocking Iranian Students 556
- Deaths Prompt a Review of Experimental Probiotic Therapy 557
- SCIENCESCOPE** 557
- DNA Assembles Materials From the Ground Up 558  
>> Report p. 594
- Aging of the Ovary Linked to PTEN Pathway 558  
>> Report p. 611

## NEWS FOCUS

- A Seismic Shift for Stem Cell Research 560  
Shinya Yamanaka: Modest Researcher, Results to Brag About  
Nuclear Transfer: Still on the Table
- Scientists Hope to Adjust the President's Vision for Space 564  
Getting Up to Speed on Space
- The Big Thaw Reaches Mongolia's Pristine North 567



560

## LETTERS

- Retraction M. A. Dwyer, L. L. Looger, H. W. Hellinga 569
- Comparing Social Skills of Children and Apes  
F. B. M. de Waal, C. Boesch, V. Horner, A. Whiten  
Response E. Herrmann et al.

## BOOKS ET AL.

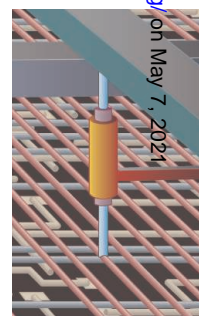
- Evolution of Primary Producers in the Sea** 571  
P. G. Falkowski and A. H. Knoll, Eds.,  
reviewed by R. Riding
- No Way Home** The Decline of the World's Great Animal Migrations D. S. Wilcove,  
reviewed by T. Alerstam 572

## POLICY FORUM

- Stationarity Is Dead: Whither Water Management? 573  
P. C. D. Milly et al.

## PERSPECTIVES

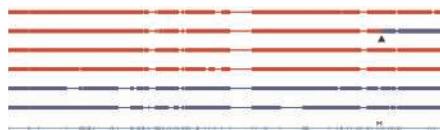
- Sweet, Hairy, Soft, and Slippery 575  
S. Lee and N. D. Spencer
- The Toll of Cathepsin K Deficiency 576  
A. M. Krieg and G. B. Lipford  
>> Report p. 624
- Glass Surfaces Not So Glassy 577  
J. R. Dutcher and M. D. Ediger  
>> Report p. 600
- The Art of Assembly 578  
F. Szoka  
>> Report p. 627
- Nanowires in Nanoelectronics 579  
D. K. Ferry
- Food Security Under Climate Change 580  
M. E. Brown and C. C. Funk  
>> Report p. 607



579

Downloaded from <http://science.sciencemag.org/> on May 7, 2021

CONTENTS continued >>



## SCIENCE EXPRESS

[www.scienceexpress.org](http://www.scienceexpress.org)

### CLIMATE CHANGE

**Human-Induced Changes in the Hydrology of the Western United States**  
*T. P. Barnett et al.*

Combining a regional hydrologic and global climate model implies that human-caused CO<sub>2</sub> emissions have already greatly changed river flows and snow pack in the western United States.

10.1126/science.1152538

### ASTROPHYSICS

**Asphericity in Supernova Explosions from Late-Time Spectroscopy**  
*K. Maeda et al.*

Spectroscopic signatures show that supernova explosions of stars that have lost their hydrogen envelopes are strongly aspherical and may be jetlike.

10.1126/science.1149437

### GENETICS

**High-Resolution Mapping of Crossovers Reveals Extensive Variation in Fine-Scale Recombination Patterns Among Humans**

*G. Coop, X. Wen, C. Ober, J. K. Pritchard, M. Przeworski*

High-density genotyping of individuals from 82 families shows unexpected variation in the number of meiotic crossovers and in the relative activity of recombination hotspots.

10.1126/science.1151851

### GENETICS

**Sequence Variants in the *RNF212* Gene Associate with Genomewide Recombination Rate**

*A. Kong et al.*

A variant of a human gene associated with high rates of recombination in males and low rates in females is an ortholog of a nematode gene essential for recombination.

10.1126/science.1152422

## TECHNICAL COMMENT ABSTRACTS

### OCEANS

Comment on "Saturation of the Southern Ocean CO<sub>2</sub> Sink Due to Recent Climate Change" 570

*R. M. Law, R. J. Matear, R. J. Francey*

[full text at www.sciencemag.org/cgi/content/full/319/5863/570a](http://www.sciencemag.org/cgi/content/full/319/5863/570a)

Comment on "Saturation of the Southern Ocean CO<sub>2</sub> Sink Due to Recent Climate Change"

*K. Zickfeld, J. C. Fyfe, M. Eby, A. J. Weaver*

[full text at www.sciencemag.org/cgi/content/full/319/5863/570b](http://www.sciencemag.org/cgi/content/full/319/5863/570b)

Response to Comments on "Saturation of the Southern Ocean CO<sub>2</sub> Sink Due to Recent Climate Change"

*C. Le Quéré et al.*

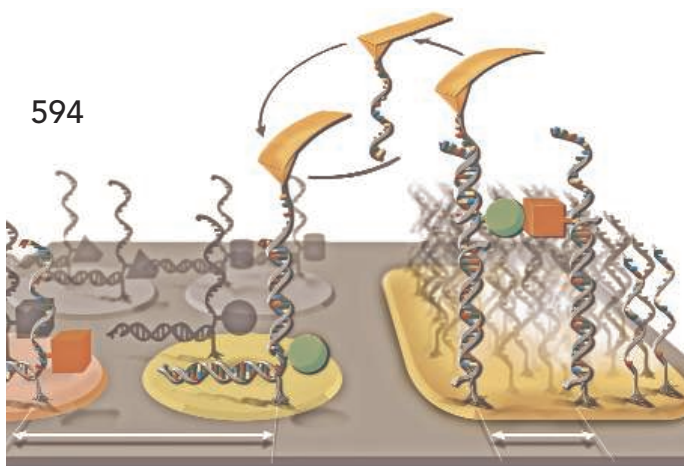
[full text at www.sciencemag.org/cgi/content/full/319/5863/570c](http://www.sciencemag.org/cgi/content/full/319/5863/570c)

## REVIEW

### CHEMISTRY

**Insights into Phases of Liquid Water from Study of Its Unusual Glass-Forming Properties** 582

*C. A. Angell*



## BREVIA

### EVOLUTION

**Languages Evolve in Punctuational Bursts** 588

*Q. D. Atkinson et al.*

A study of Bantu, Indo-European, Austronesian, and Polynesian languages shows that up to one-third of their words arose in rapid evolutionary bursts from the predecessor tongue.

## RESEARCH ARTICLE

### GENETICS

**Widespread Genetic Incompatibility in *C. elegans* Maintained by Balancing Selection** 589

*H. S. Seidel, M. V. Rockman, L. Kruglyak*

Strong natural selection is maintaining multiple alleles of a gene in wild populations of the nematode *C. elegans*, despite their negative effect on fitness.

## REPORTS

### CHEMISTRY

**Single-Molecule Cut-and-Paste Surface Assembly** 594

*S. K. Kufer et al.*

An atomic force microscope tip derivatized with DNA can pick up and assemble large molecules bearing DNA handles into specific patterns on a surface in aqueous solution.

>> *News story p. 558*

### PHYSICS

**Electronic Liquid Crystal State in the High-Temperature Superconductor YBa<sub>2</sub>Cu<sub>3</sub>O<sub>6.45</sub>** 597

*V. Hinkov et al.*

Neutron-scattering measurements suggest that ordering of fluctuating electron spins explains the liquid crystal phases recently seen in some correlated electron systems.

CONTENTS continued >>

REPORTS CONTINUED...

MATERIALS SCIENCE

Measuring the Surface Dynamics of Glassy Polymers 600

Z. Fakhraai and J. A. Forrest

Removal of gold nanospheres dimpling the surface of a polymer film reveals that polymer chains near the surface relax more rapidly than the bulk.

>> Perspective p. 577

GEOCHEMISTRY

Abiogenic Hydrocarbon Production at Lost City 604

Hydrothermal Field

G. Proskurowski et al.

The abundance of hydrocarbons and isotopic data imply that hydrocarbons are produced chemically from mantle carbon at a cool Atlantic Ocean hydrothermal system.

CLIMATE CHANGE

Prioritizing Climate Change Adaptation Needs for 607

Food Security in 2030

D. B. Lobell et al.

Analysis of 12 food-insecure regions for vulnerability to crop failure from climate change indicates that those in southern Africa and south Asia are in particular need of attention.

>> Perspective p. 580

DEVELOPMENTAL BIOLOGY

Oocyte-Specific Deletion of *Pten* Causes Premature 611

Activation of the Primordial Follicle Pool

P. Reddy et al.

In mice, a tumor suppressor commonly mutated in human cancers prevents premature activation of ovarian follicles, allowing them to form oocytes throughout life.

>> News story p. 558

DEVELOPMENTAL BIOLOGY

The Maternal Nucleolus Is Essential for Early 613

Embryonic Development in Mammals

S. Ogushi et al.

After fertilization or somatic cell nuclear transfer, the oocyte's nucleolus but not the sperm's is essential for subsequent development.

MEDICINE

Profiling Essential Genes in Human Mammary Cells 617

by Multiplex RNAi Screening

J. M. Silva et al.

Cancer Proliferation Gene Discovery Through 620

Functional Genomics

M. R. Schlabach et al.

Systematic inhibition of gene expression with RNA interference screening reveals genes essential for growth and survival of tumor cells, potentially leading to new cancer drugs.

IMMUNOLOGY

Cathepsin K-Dependent Toll-Like Receptor 9 624

Signaling Revealed in Experimental Arthritis

M. Asagiri et al.

A lysosomal enzyme normally associated with osteoclasts of the bone has further function in signaling through an innate receptor in immune cells.

>> Perspective p. 576

IMMUNOLOGY

Systemic Leukocyte-Directed siRNA Delivery 627

Revealing Cyclin D1 as an Anti-Inflammatory Target

D. Peer, E. J. Park, Y. Morishita, C. V. Carman, M. Shimaoka

Small RNAs are packaged in lipid nanoparticles with antibodies that direct them to specific gut immune cells, where they suppress inflammation by inhibiting a cell-cycle protein.

>> Perspective p. 578

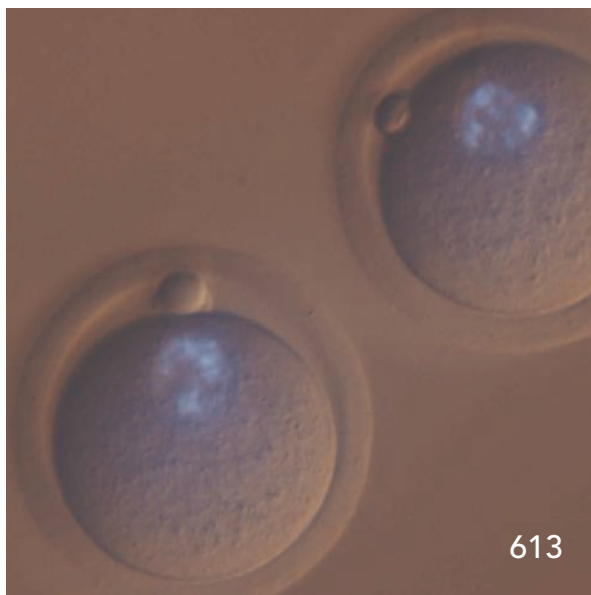
BIOCHEMISTRY

Direct Observation of Hierarchical Folding in 630

Single Riboswitch Aptamers

W. J. Greenleaf et al.

Optical trapping reveals that activation by adenine stabilizes the weakest helix in a riboswitch, after which secondary and tertiary structures are formed sequentially.



613

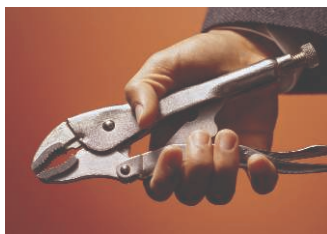


ADVANCING SCIENCE. SERVING SOCIETY

SCIENCE (ISSN 0036-8075) is published weekly on Friday, except the last week in December, by the American Association for the Advancement of Science, 1200 New York Avenue, NW, Washington, DC 20005. Periodicals Mail postage (publication No. 484460) paid at Washington, DC, and additional mailing offices. Copyright © 2008 by the American Association for the Advancement of Science. The title SCIENCE is a registered trademark of the AAAS. Domestic individual membership and subscription (51 issues): \$144 (\$74 allocated to subscription). Domestic institutional subscription (51 issues): \$770; Foreign postage extra: Mexico, Caribbean (surface mail) \$55; other countries (air assist delivery) \$85. First class, airmail, student, and emeritus rates on request. Canadian rates with GST available upon request, GST #1254 88122. Publications Mail Agreement Number 1069624. SCIENCE is printed on 30 percent post-consumer recycled paper. Printed in the U.S.A.

Change of address: Allow 4 weeks, giving old and new addresses and 8-digit account number. Postmaster: Send change of address to AAAS, P.O. Box 96178, Washington, DC 20090-6178. Single-copy sales: \$10.00 current issue, \$15.00 back issue prepaid includes surface postage; bulk rates on request. Authorization to photocopy material for internal or personal use under circumstances not falling within the fair use provisions of the Copyright Act is granted by AAAS to libraries and other users registered with the Copyright Clearance Center (CCC) Transactional Reporting Service, provided that \$20.00 per article is paid directly to CCC, 222 Rosewood Drive, Danvers, MA 01923. The identification code for Science is 0036-8075. Science is indexed in the Reader's Guide to Periodical Literature and in several specialized indexes.

CONTENTS continued >>



Second hand?

## SCIENCE NOW

[www.sciencenow.org](http://www.sciencenow.org) DAILY NEWS COVERAGE

### Tool Use Is Just a Trick of the Mind

Primate brains learn how to use pliers and other implements by treating them as part of the body.

### Solving the Carbon-14 Mystery

Physicists figure out why the anthropological dating tool decays so slowly.

### The Ocean's Biological Deserts Are Expanding

Global warming may be driving an enlargement of the sea's least productive regions.



Making connections through collaboration.

## SCIENCE CAREERS

[www.sciencereers.org](http://www.sciencereers.org) CAREER RESOURCES FOR SCIENTISTS

### Maximizing Productivity and Recognition, Part 2: Collaboration and Networking

*S. Pfirman, P. Balsam, R. E. Bell, J. D. Laird, P. Culligan*  
Collaboration and networking help make connections that can advance both science and your career.

### What's Ahead for Early-Career Scientists?

*B. L. Benderly*

A comprehensive examination finds opportunities in the U.S. brighter in industry than in academia.

### Learning to Manage

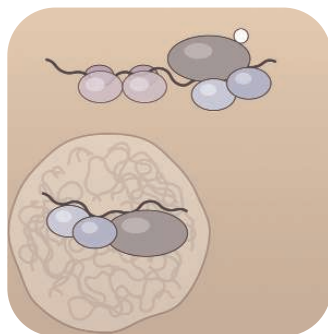
*H. Franzen*

A workshop series in Germany teaches management skills to young scientists before they need them.

### February 2008 Funding News

*J. Fernández*

Learn about the latest in research funding opportunities, scholarships, fellowships, and internships.



Suppression of translation by FMRP.

## SCIENCE SIGNALING

[www.stke.org](http://www.stke.org) THE SIGNAL TRANSDUCTION KNOWLEDGE ENVIRONMENT

### PERSPECTIVE: Metabotropic Glutamate Receptors and Fragile X Mental Retardation Protein—Partners in Translational Regulation at the Synapse

*J. A. Ronesi and K. M. Huber*

On the road to protein synthesis-dependent plasticity, FMRP is the brake and mGluRs are the gas.

### EVENTS

Plan to attend a meeting related to cell signaling.

## SCIENCE PODCAST



Download the 1 February *Science* Podcast to hear about how languages evolve in bursts, human-induced changes in U.S. hydrology, the latest on stem cells, and more.

[www.sciencemag.org/about/podcast.dtl](http://www.sciencemag.org/about/podcast.dtl)

Separate individual or institutional subscriptions to these products may be required for full-text access.

# Science

**319 (5863)**

*Science* **319** (5863), 545-661.

**ARTICLE TOOLS**

<http://science.sciencemag.org/content/319/5863>

**PERMISSIONS**

<http://www.sciencemag.org/help/reprints-and-permissions>

Use of this article is subject to the [Terms of Service](#)

---

*Science* (print ISSN 0036-8075; online ISSN 1095-9203) is published by the American Association for the Advancement of Science, 1200 New York Avenue NW, Washington, DC 20005. The title *Science* is a registered trademark of AAAS.

Copyright © 2008 The Authors, some rights reserved; exclusive licensee American Association for the Advancement of Science. No claim to original U.S. Government Works.