



## COVER

Lake Boku at the Ounianga oasis in remote northeastern Chad, one of the few remaining bodies of water in the almost rainless Sahara. Still sustained by fossil groundwater dating from the humid past, it is doomed because of encroaching dunes. See page 765.

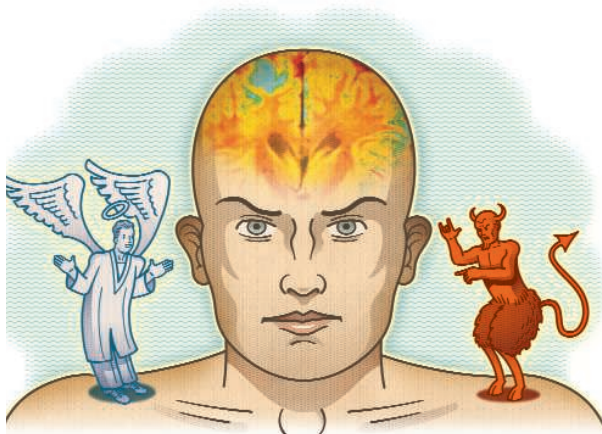
Photo: S. Kröpelin

## NEWS OF THE WEEK

- Going From *RAGS* to Riches Is Proving to Be Very Difficult 728
- Ancient Algae Suggest Sea Route for First Americans 729  
 >> Report p. 784
- Genome Speaks to Transitional Nature of Monotremes 730
- States Push Academic Freedom Bills 731
- SCIENCE SCOPE** 731
- Chinese Province Crafts Pioneering Law to Thwart Biopiracy 732

## NEWS FOCUS

- The Roots of Morality 734  
 >> Science Express Report by M. Hsu et al.
- To Touch the Water of Mars and Search for Life's Abode 738
- Talk Nerdy to Me 740
- Into the Wild: Reintroduced Animals Face Daunting Odds 742



734

## DEPARTMENTS

- 711 Science Online
- 713 This Week in *Science*
- 718 Editors' Choice
- 722 Contact *Science*
- 725 Random Samples
- 727 Newsmakers
- 815 New Products
- 816 Science Careers

## EDITORIAL

- 717 AIDS and the Next 25 Years  
 by Alan Bernstein

## LETTERS

- Lost in Transliteration L. Wang 745
- Evolution and Faith: Empathy Is Misplaced  
 C. W. Stevens
- Evolution and Faith: Empathy Is Crucial A. Whipple
- Data Discrepancies in Solar-Climate Link  
 R. T. Pierrehumbert
- Living Up to Ancient Civilizations G. P. Glasby

## CORRECTIONS AND CLARIFICATIONS 746

## BOOKS ET AL.

- Disrupting Science** Social Movements, American Scientists, and the Politics of the Military, 1945–1975  
 K. Moore, reviewed by A. J. Wolfe 747
- Architect and Engineer** A Study in Sibling Rivalry  
 A. Saint, reviewed by T. P. Hughes 748

## POLICY FORUM

- Reassessing HIV Prevention 749  
 M. Potts et al.

## PERSPECTIVES

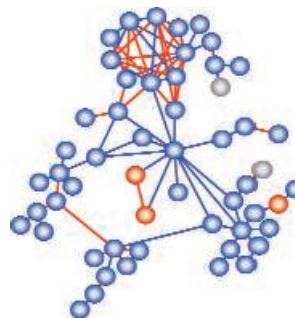
- Designer Atomic Nuclei 751  
 B. M. Sherrill
- How the Sahara Became Dry 752  
 J. A. Holmes  
 >> Research Article p. 765
- A STEP into Darkness or Light? 753  
 J. P. Moore, P. J. Klasse, M. J. Dolan, S. K. Ahuja
- Tinkering with Acellular Division 755  
 J. Lutkenhaus  
 >> Reports pp. 789 and 792
- High-Frequency Chip Connections 756  
 T. J. Spencer, T. Osborn, P. A. Kohl
- News About Nitrogen 757  
 M. C. Horner-Devine and A. C. Martiny



748

Downloaded from <http://science.sciencemag.org/> on September 20, 2020

CONTENTS continued >>



## SCIENCE EXPRESS

[www.scienceexpress.org](http://www.scienceexpress.org)

### PSYCHOLOGY

**The Right and the Good: Distributive Justice and Neural Encoding of Equity and Efficiency**

*M. Hsu, C. Anen, S. R. Quartz*

A brain region linked to emotion-processing systems is activated as humans weigh fairness to an individual against benefit for a group.

>> *News story p. 734*

10.1126/science.1153651

### MICROBIOLOGY

**Anticipatory Behavior Within Microbial Genetic Networks**

*I. Tagkopoulos, Y.-C. Liu, S. Tavazoie*

Predictable sequences of environmental signals can be exploited by bacteria so that they learn to anticipate future metabolic needs and thereby gain a competitive edge.

10.1126/science.1154456

### CELL BIOLOGY

**An in Vivo Map of the Yeast Protein Interactome**

*K. Tarassov et al.*

A method that identifies pairs of proteins that are 8 nanometers apart produces a map of interacting proteins in living yeast, finding known and previously unknown networks.

10.1126/science.1153878

### MOLECULAR BIOLOGY

**PERSPECTIVE: Slicing and Dicing for Small RNAs**

*J. A. Birchler and H. H. Kavi*

10.1126/science.1159018

## TECHNICAL COMMENT ABSTRACTS

### ATMOSPHERIC SCIENCE

**Comment on "Absence of Cooling in New Zealand and the Adjacent Ocean During the Younger Dryas Chronozone"** 746

*P. J. Applegate, T. V. Lowell, R. B. Alley*

[full text at www.sciencemag.org/cgi/content/full/320/5877/746d](http://www.sciencemag.org/cgi/content/full/320/5877/746d)

**Response to Comment on "Absence of Cooling in New Zealand and the Adjacent Ocean During the Younger Dryas Chronozone"**

*T. T. Barrows, S. J. Lehman, L. K. Fifield, P. De Deckker*

[full text at www.sciencemag.org/cgi/content/full/320/5877/746e](http://www.sciencemag.org/cgi/content/full/320/5877/746e)

## REVIEW

### MEDICINE

**Toward an AIDS Vaccine** 760

*B. D. Walker and D. R. Burton*

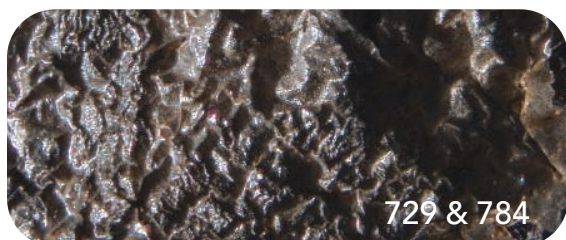
## RESEARCH ARTICLE

### ECOLOGY

**Climate-Driven Ecosystem Succession in the Sahara: The Past 6000 Years** 765

*S. Kröpelin et al.*

A climate record from lake sediments in Chad shows that the Sahara changed gradually from a tropical ecosystem to a desert, not abruptly as implied by Atlantic dust layers. >> *Perspective p. 752*



729 & 784

## REPORTS

### APPLIED PHYSICS

**Controlled Phase Shifts with a Single Quantum Dot** 769

*I. Fushman et al.*

A single quantum dot coupled to a photonic crystal can be used to shift the phase of light by up to  $\pi/4$  radians at the single photon level, as needed for quantum logic operations.

### APPLIED PHYSICS

**Conditional Dynamics of Interacting Quantum Dots** 772

*L. Robledo et al.*

Controlled coherent manipulation is realized in a pair of self-assembled quantum dots: The optical response of one depends on the state of the other.

### APPLIED PHYSICS

**Subnanometer Motion of Cargoes Driven by Thermal Gradients Along Carbon Nanotubes** 775

*A. Barreiro et al.*

A segment of the outer shell of a multiwall carbon nanotube can move back and forth in response to a thermal gradient created by electrical current passing through the nanotube.

### CLIMATE CHANGE

**Fracture Propagation to the Base of the Greenland Ice Sheet During Supraglacial Lake Drainage** 778

*S. B. Das et al.*

A large lake on the surface of the Greenland Ice Sheet drained out through and along the base of the Ice Sheet within 2 hours, revealing an efficient basal hydrological system.

### CLIMATE CHANGE

**Seasonal Speedup Along the Western Flank of the Greenland Ice Sheet** 781

*I. Joughin et al.*

Measurements of ice motion from Greenland show that summer meltwater accelerates ice sheet flow by 50 to 100% overall but has less effect in the faster outlet glaciers.

CONTENTS continued >>

REPORTS CONTINUED...

ARCHAEOLOGY

Monte Verde: Seaweed, Food, Medicine, and the Peopling of South America 784  
*T. D. Dillehay et al.*

Carbon-14 dates on seaweed brought to Monte Verde, Chile, show that the site was used 14,000 years ago and that the earliest New World people consumed marine resources. >> *News story p. 729*

ANTHROPOLOGY

DNA from Pre-Clovis Human Coprolites in Oregon, North America 786  
*M. T. P. Gilbert et al.*

Fossil human feces from an Oregon cave predate the Clovis culture by about 1000 years, and DNA from the feces marks the presence of Native Americans in North America.

BIOCHEMISTRY

Spatial Regulators for Bacterial Cell Division Self-Organize into Surface Waves in Vitro 789  
*M. Loose et al.*

Two proteins that define the plane of cell division self-organize into waves and spirals on a flat membrane, suggesting that these patterns underlie their function in vivo. >> *Perspective p. 755*

BIOCHEMISTRY

Reconstitution of Contractile FtsZ Rings in Liposomes 792  
*M. Osawa, D. E. Anderson, H. P. Erickson*

A tubulin homolog from prokaryotes can, without other proteins, assemble into rings around liposomes and constrict, suggesting a primordial cell division mechanism. >> *Perspective p. 755*

BIOCHEMISTRY

Architecture of a Charge-Transfer State Regulating Light Harvesting in a Plant Antenna Protein 794  
*T. K. Ahn et al.*

To protect itself from oxidative damage in bright light, photosystem II operates a tunable shunt that directs excess energy to a yellow accessory pigment that is abundant in corn.

VIROLOGY

Phosphorylation of Retinoblastoma Protein by Viral Protein with Cyclin-Dependent Kinase Function 797  
*A. J. Hume et al.*

A human cytomegalovirus protein takes control of the host cell cycle by mimicking a cell cycle kinase that phosphorylates and inactivates a tumor suppressor.

ECOLOGY

Adaptive Phenotypic Plasticity in Response to Climate Change in a Wild Bird Population 800  
*A. Charmantier et al.*

A 47-year study of great tits in Britain shows that the ability of individual birds to shift their breeding date has enabled the species to thrive as climate has changed.

NEUROSCIENCE

Temperature Sensing by an Olfactory Neuron in a Circuit Controlling Behavior of *C. elegans* 803  
*A. Kuhara et al.*

An olfactory neuron in *Caenorhabditis elegans* also senses the ambient temperature and is necessary for worms' propensity to seek out the temperature at which they were raised.

CELL BIOLOGY

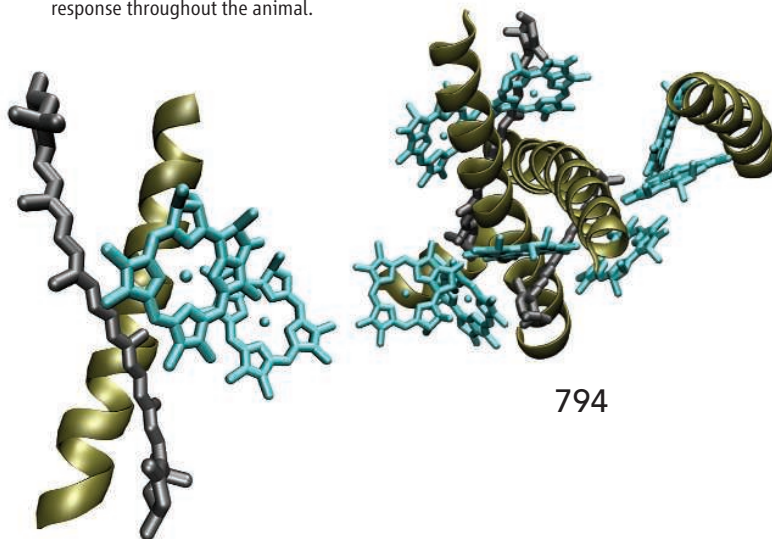
Discovery of a Cytokine and Its Receptor by Functional Screening of the Extracellular Proteome 807  
*H. Lin et al.*

A systematic, functional screen of extracellular proteins in yeast identified a previously unknown receptor-ligand pair: the cytokine interleukin-34 and its receptor.

CELL BIOLOGY

Regulation of the Cellular Heat Shock Response in *Caenorhabditis elegans* by Thermosensory Neurons 811  
*V. Prahlad, T. Cornelius, R. I. Morimoto*

Activation of a heat-sensitive sensory neuron in the worm *Caenorhabditis elegans* unexpectedly triggers a heat-shock response throughout the animal.



ADVANCING SCIENCE, SERVING SOCIETY

SCIENCE (ISSN 0036-8075) is published weekly on Friday, except the last week in December, by the American Association for the Advancement of Science, 1200 New York Avenue, NW, Washington, DC 20005. Periodicals Mail postage (publication No. 484460) paid at Washington, DC, and additional mailing offices. Copyright © 2008 by the American Association for the Advancement of Science. The title SCIENCE is a registered trademark of the AAAS. Domestic individual membership and subscription (51 issues): \$144 (\$74 allocated to subscription). Domestic institutional subscription (51 issues): \$770; Foreign postage extra: Mexico, Caribbean (surface mail) \$55; other countries (air assist delivery) \$85. First class, airmail, student, and emeritus rates on request. Canadian rates with GST available upon request, GST #1254 88122. Publications Mail Agreement Number 1069624. Printed in the U.S.A.

Change of address: Allow 4 weeks, giving old and new addresses and 8-digit account number. Postmaster: Send change of address to AAAS, P.O. Box 96178, Washington, DC 20090-6178. Single-copy sales: \$10.00 current issue, \$15.00 back issue prepaid includes surface postage; bulk rates on request. Authorization to photocopy material for internal or personal use under circumstances not falling within the fair use provisions of the Copyright Act is granted by AAAS to libraries and other users registered with the Copyright Clearance Center (CCC) Transactional Reporting Service, provided that \$20.00 per article is paid directly to CCC, 222 Rosewood Drive, Danvers, MA 01923. The identification code for Science is 0036-8075. Science is indexed in the Reader's Guide to Periodical Literature and in several specialized indexes.

CONTENTS continued >>



Seeing is believing.

## SCIENCE NOW

[www.sciencenow.org](http://www.sciencenow.org)

HIGHLIGHTS FROM OUR DAILY NEWS COVERAGE

### Seeing Love in a Different Light

Jumping spider mating displays flash a wavelength that researchers thought no animal could detect.

### Extra Pounds a Boon?

Fat transplants in mice suggest potential benefit.

### Fungus Could Be a Fix for Uranium Pollution

Common soil organism holds the metal in place, keeping it from spreading.



An accurate source of career information?

## SCIENCE CAREERS

[www.sciencereers.org/career\\_development](http://www.sciencereers.org/career_development)

FREE CAREER RESOURCES FOR SCIENTISTS

### Opportunities: Research Inc.

*P. Fiske*

It is useful to think of your research career as a business.

### Rumors Fly Online When Jobs Are at Stake

*L. Laursen*

Can job-rumor Web sites damage your prospects?

### Alternative Careers in Chemistry

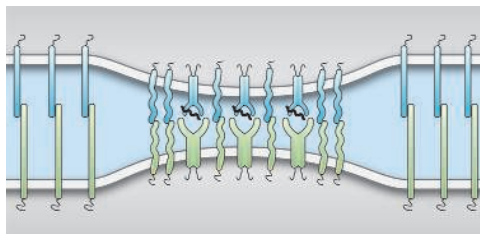
*L. Balbes*

Many opportunities in chemistry exist away from the bench.

### Science Careers Blog

*J. Austin*

Read the latest news and information on the scientific workforce.



T cell receptor clustering.

## SCIENCE SIGNALING

[www.sciencesignaling.org](http://www.sciencesignaling.org)

THE SIGNAL TRANSDUCTION KNOWLEDGE ENVIRONMENT

### PERSPECTIVE: TCR Triggering by the pMHC Complex—Valency, Affinity, and Dynamics

*R. Varma*

Multiple models compete to explain T cell receptor activation.

### REVIEW: Is Zinc a Neuromodulator?

*A. R. Kay and K. Tóth*

Experiments with metal chelators provide the best evidence for zinc as a regulator of synaptic activity.

### FORUM: Open Forum on Cell Signaling

*N. R. Gough and J. F. Foley*

Read highlights from the Experimental Biology 2008 meeting.

## SCIENCE PODCAST

Download the 9 May *Science* Podcast to hear about the neurobiology of morality, climate change in the Sahara, HIV prevention priorities, and more.

[www.sciencemag.org/about/podcast.dtl](http://www.sciencemag.org/about/podcast.dtl)



Separate individual or institutional subscriptions to these products may be required for full-text access.

# Science

**320 (5877)**

*Science* **320** (5877), 713-815.

**ARTICLE TOOLS**

<http://science.sciencemag.org/content/320/5877>

**PERMISSIONS**

<http://www.sciencemag.org/help/reprints-and-permissions>

Use of this article is subject to the [Terms of Service](#)

---

*Science* (print ISSN 0036-8075; online ISSN 1095-9203) is published by the American Association for the Advancement of Science, 1200 New York Avenue NW, Washington, DC 20005. The title *Science* is a registered trademark of AAAS.

Copyright © 2008 The Authors, some rights reserved; exclusive licensee American Association for the Advancement of Science. No claim to original U.S. Government Works.