

EDITORIAL

- 916 On Becoming a Scientist
Bruce Alberts
>> *Science Podcast*

NEWS OF THE WEEK

- 920 U.S. Takes Steps to Use Science to Improve Ties to Muslim World
- 921 Wellcome Trust to Shift From Projects to People
- 922 Europe Reconsiders H1N1 Flu Shots for Children
- 923 Restructuring Physics Labs Brings Delight and Despair
- 923 From the *Science* Policy Blog
- 924 No Sign Yet of Himalayan Meltdown, Indian Report Finds
Could Glacier Research Help Thaw Himalayan Standoff?
- 925 From *Science's* Online Daily News Site

NEWS FOCUS

- 926 Amid Worrisome Signs of Warming, 'Climate Fatigue' Sets In
>> *Science Podcast*
- 929 Internal Affairs
- 932 ITER Blueprints Near Completion, But Financial Hurdles Lie Ahead

LETTERS

- 934 Protecting the Herd from H1N1
J. N. S. Eisenberg et al.
Response
J. Medlock and A. P. Galvani
Repurposing for Neglected Diseases
S. R. B. Uliana and M. A. Barcinski
Response
M. S. Boguski et al.
A SMART Plan for New Investigators
D. K. Lahiri

- 936 CORRECTIONS AND CLARIFICATIONS

BOOKS ET AL.

- 937 Let Newton Be!
C. Baxter, directed by P. Morris,
reviewed by *R. Stott and H. Morrish*

POLICY FORUMS

- 938 Pandemic H1N1 and the 2009 Hajj
S. H. Ebrahim et al.
- 940 Bridging the Montreal-Kyoto Gap
J. Cohen et al.

PERSPECTIVES

- 942 Viewing the Seeds of Crystallization
J. M. Gibson
>> *Report p. 980*
- 943 Reflections on Cybersecurity
W. A. Wulf and A. K. Jones
- 944 Strategies to Get Arrested
A. Ogawa and R. J. Sommer
>> *Research Article p. 954 and Report p. 994*
- 945 Photosynthesis in the Open Ocean
J. P. Zehr and R. M. Kudela
- 947 Retrospective:
Ruth L. Kirschstein (1926–2009)
H. K. Schachman and M. Cassman

VIEWPOINT

- 948 How Telomeres Solve the End-Protection Problem
T. de Lange

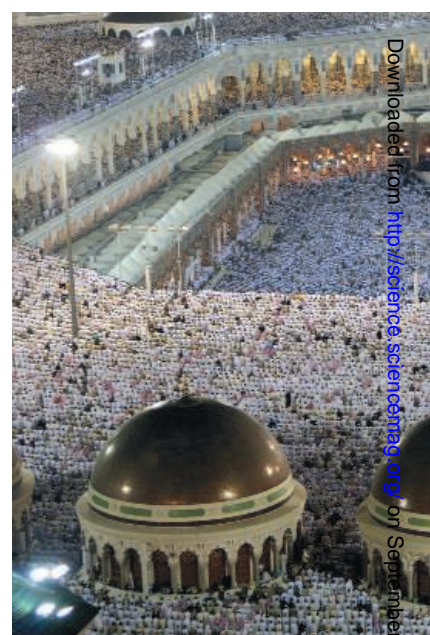
BREVIA

- 953 Widespread Occurrence of Self-Cleaving Ribozymes
C.-H. T. Webb et al.
Once thought to be an oddity, small catalytic RNAs have been found in a wide range of organisms.

CONTENTS continued >>

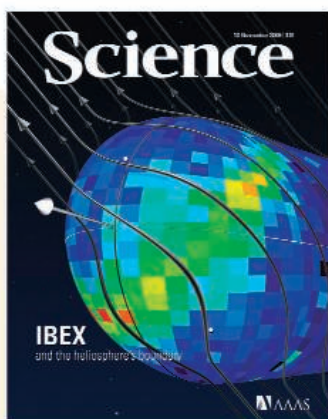


page 926



page 938

Downloaded from <http://science.sciencemag.org/> on September 16, 2019



COVER

The Interstellar Boundary Explorer (IBEX) spacecraft has returned the first global images of the interaction of our heliosphere with the local interstellar medium. IBEX observations show a ribbon of energetic neutral atoms (reds to greens), snaking between the positions of the two Voyager spacecraft (white dots). This ribbon marks the region where the galactic magnetic field (gray lines) wraps most tightly around the heliosphere's boundary. See the series of Reports starting on page 959.

Image: *Patrick McPike/Adler Planetarium*

DEPARTMENTS

- 915 This Week in *Science*
- 917 Editors' Choice
- 918 *Science* Staff
- 919 Random Samples
- 1008 New Products
- 1009 *Science* Careers

RESEARCH ARTICLE

- 954 **Starvation Protects Germline Stem Cells and Extends Reproductive Longevity in *C. elegans***
G. Angelo and M. R. Van Gilst
During starvation, germline stem cells are saved for regeneration when food is restored.
>> *Perspective p. 944*

REPORTS

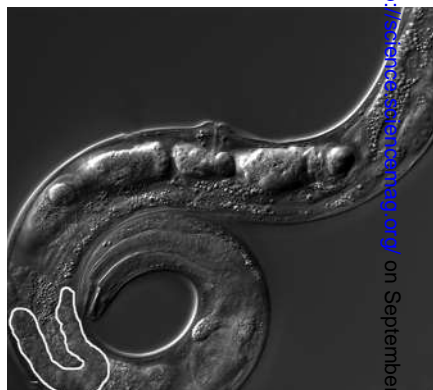
- 959 **Global Observations of the Interstellar Interaction from the Interstellar Boundary Explorer (IBEX)**
D. J. McComas et al.
- 962 **Width and Variation of the ENA Flux Ribbon Observed by the Interstellar Boundary Explorer**
S. A. Fuselier et al.
- 964 **Structures and Spectral Variations of the Outer Heliosphere in IBEX Energetic Neutral Atom Maps**
H. O. Funsten et al.
- 966 **Comparison of Interstellar Boundary Explorer Observations with 3D Global Heliospheric Models**
N. A. Schwadron et al.
Observations by the Interstellar Boundary Explorer have revealed surprising features in the interaction between the heliosphere and the interstellar medium.
- 969 **Direct Observations of Interstellar H, He, and O by the Interstellar Boundary Explorer**
E. Möbius et al.
Detection of H, He, and O flowing into the heliosphere from the interstellar medium tells us about our local interstellar environment.
- 971 **Imaging the Interaction of the Heliosphere with the Interstellar Medium from Saturn with Cassini**
S. M. Krimigis et al.
Observations by Cassini show that some of the features revealed by IBEX extend to high energies.
- 974 **Observation of Half-Quantum Vortices in an Exciton-Polariton Condensate**
K. G. Lagoudakis et al.
Evidence is presented for the existence of half-quantum vortices in exciton-polariton condensates.
- 977 **A Strain-Driven Morphotropic Phase Boundary in BiFeO₃**
R. J. Zeches et al.
Growth of epitaxial films of BiFeO₃ on various substrates may provide a route toward making lead-free ferroelectric devices.

- 980 **Observation of the Role of Subcritical Nuclei in Crystallization of a Glassy Solid**
B.-S. Lee et al.
Fluctuation transmission electron microscopy images nanoscale nuclei and their influence on subsequent crystallization.
>> *Perspective p. 942*
- 984 **Partitioning Recent Greenland Mass Loss**
M. van den Broeke et al.
The major components of decay contributing to mass loss from the Greenland Ice Sheet can be quantified.
- 986 **CD4⁺ Regulatory T Cells Control T_H17 Responses in a Stat3-Dependent Manner**
A. Chaudhry et al.
Suppressor T cells regulate different classes of immune responses through induction of specific transcription factors.
- 991 **A Spindle Assembly Checkpoint Protein Functions in Prophase I Arrest and Prometaphase Progression**
H. Homer et al.
A protein vital for correct segregation of chromosomes in mitosis is also needed to complete meiosis in mouse oocytes.
- 994 **Two Chemoreceptors Mediate Developmental Effects of Dauer Pheromone in *C. elegans***
K. Kim et al.
Chemical signals that determine alternative nematode developmental programs act via two G protein-coupled receptors.
>> *Perspective p. 944*
- 998 **Sexual Conflict Resolved by Invasion of a Novel Sex Determiner in Lake Malawi Cichlid Fishes**
R. B. Roberts et al.
A color phenotype that is advantageous to females is linked to a sex-determining gene locus in cichlids.
- 1002 **Mutations in Two Independent Pathways Are Sufficient to Create Hermaphroditic Nematodes**
C. Baldi et al.
Female nematode worms can be turned into hermaphrodites through the modification of two genes.
>> *Science Podcast*
- 1005 **Amyloid- β Dynamics Are Regulated by Orexin and the Sleep-Wake Cycle**
J.-E. Kang et al.
Sleep patterns can influence amyloid plaque formation in a mouse model of Alzheimer's disease.

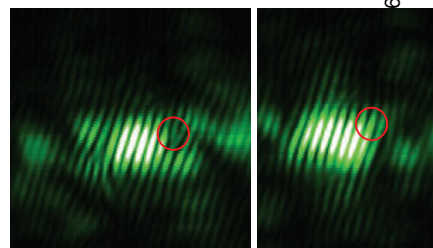
CONTENTS continued >>



pages 942 & 980



page 954



page 974

SCIENCEONLINE

SCIENCEEXPRESS

www.sciencexpress.org

Real-Time Observation of Carbonic Acid Formation in Aqueous Solution

K. Adamczyk et al.

The use of a photoacid enables the long-sought characterization of the conjugate acid of bicarbonate.
10.1126/science.1180060

Two White Dwarfs with Oxygen-Rich Atmospheres

B. T. Gänsicke et al.

Two white dwarfs may have evolved from intermediate-mass stars that avoided exploding as supernovae.
10.1126/science.1180228

Structure of an RNA Polymerase II–TFIIB Complex and the Transcription Initiation Mechanism

X. Liu et al.

X-ray structures provide more details on the initiation of transcription.
10.1126/science.1182015

The Fanconi Anemia Pathway Promotes Replication-Dependent DNA Interstrand Cross-Link Repair

P. Knipscheer et al.

Insertion of a nucleotide during the repair of a complex lesion in DNA requires tagging of a lysine residue.
10.1126/science.1182372

Reproducibility Distinguishes Conscious from Nonconscious Neural Representations

A. Schurger et al.

Analysis of functional magnetic resonance imaging data reveals that neural activation patterns are more reproducible for seen versus unseen objects.
10.1126/science.1180029

SCIENCENOW

www.sciencenow.org

Highlights From Our Daily News Coverage

Arthritis on the Move

Scientists have pinpointed how rheumatoid arthritis spreads inside the body.

Chocolate Cake: The New Heroin?

Yo-yo diets may lead to food addiction.

Experts Criticize Nanoparticle Study

A paper that hints at dangers of nanoscopic particles has no relevance to human disease, they say.

SCIENCESIGNALING

www.sciencesignaling.org

The Signal Transduction Knowledge Environment

EDITORIAL GUIDE: Focus Issue—Coping with Cellular Stress

W. Wong

Cells use diverse signaling pathways to sense and respond to stress.

PERSPECTIVE: Aiming Straight for the Heart—Prolyl Hydroxylases Set the BAR

J. A. Garcia et al.

β 2-adrenergic receptor density is regulated by oxygen availability.

PERSPECTIVE: A New Mechanism of Phosphoregulation in Signal Transduction Pathways

K. Jung and H. Jung

A protein kinase phosphorylates arginine residues in a transcriptional factor during the bacterial heat shock response.

PERSPECTIVE: A Gluconeogenic Tryst in the Nucleus, with ER Stress as the Third Wheel

D. T. Rutkowski

A transcriptional co-regulator links gluconeogenesis and ER stress responses in the liver.

PERSPECTIVE: FBXO31—A New Player in the Ever-Expanding DNA Damage Response Orchestra

Y. Shiloh et al.

FBXO31 is a damage-induced checkpoint protein that enhances cyclin D1 degradation in response to genotoxic stress.

PERSPECTIVE: Nutrition-Minded Cell Cycle

K. Shiozaki

Cross talk between TOR and MAPK signaling pathways determines mitotic onset in fission yeast during nutrition stress.

RESEARCH ARTICLE: H₂S Signals Through Protein S-Sulfhydration

A. K. Mustafa et al.

PODCAST

S. H. Snyder and A. M. VanHook

The gasotransmitter hydrogen sulfide signals by sulfhydrating target proteins.

SCIENCECAREERS

www.sciencereers.org/career_magazine

Free Career Resources for Scientists

A Recipe for Collaboration

L. Chiu

An unlikely collaboration resulted in a new technique for measuring hormone levels.

Taken for Granted: Shocked, Shocked! to Find Disappointment on Campus

B. L. Benderly

A new book takes a revealing look at careers in academic science.

A Scientist Finds a Niche

S. Gaidos

Dean Pearson overcame a slow start and made a difference by observing ecological communities.

SCIENCE TRANSLATIONAL MEDICINE

www.sciencetranslationalmedicine.org

Integrating Medicine and Science

PERSPECTIVE: Regulatory Considerations for Translating Gene Therapy—A European Union Perspective

M. C. Galli

Hypertrophy triggers discussions on the translational challenges of gene therapy.

RESEARCH ARTICLE: Follistatin Gene Delivery Enhances Muscle Growth and Strength in Nonhuman Primates

J. Kota et al.

Gene therapy in monkeys shows promise for muscle-wasting diseases.

RESEARCH ARTICLE: The Effect of Diet on the Human Gut Microbiome—A Metagenomic Analysis in Humanized Gnotobiotic Mice

P. J. Turnbaugh et al.

PERSPECTIVE: Gut Check—Testing a Role for the Intestinal Microbiome in Human Obesity
J. S. Flier and J. J. Mekalanos

The gut microbiome contributes to human metabolic disease and may yield new targets for preventative treatments.

SCIENCEPODCAST

www.sciencemag.org/multimedia/podcast
Free Weekly Show

Download the 13 November *Science* Podcast to hear about climate change predictions, creating hermaphroditic worms, and more.

ORIGINSBLOG

blogs.sciencemag.org/origins
A History of Beginnings

SCIENCEINSIDER

blogs.sciencemag.org/scienceinsider
Science Policy News and Analysis

SCIENCE (ISSN 0036-8075) is published weekly on Friday, except the last week in December, by the American Association for the Advancement of Science, 1200 New York Avenue, NW, Washington, DC 20005. Periodicals Mail postage (publication No. 484460) paid at Washington, DC, and additional mailing offices. Copyright © 2009 by the American Association for the Advancement of Science. The title SCIENCE is a registered trademark of the AAAS. Domestic individual membership and subscription (51 issues): \$146 (\$74 allocated to subscription). Domestic institutional subscription (51 issues): \$835; Foreign postage extra: Mexico, Caribbean (surface mail) \$55; other countries (air assist delivery) \$85. First class, airmail, student, and emeritus rates on request. Canadian rates with GST available upon request, GST #1254 88122. Publications Mail Agreement Number 1069624. **Printed in the U.S.A.**

Change of address: Allow 4 weeks, giving old and new addresses and 8-digit account number. **Postmaster:** Send change of address to AAAS, P.O. Box 96178, Washington, DC 20090-6178. **Single-copy sales:** \$10.00 current issue, \$15.00 back issue prepaid includes surface postage; bulk rates on request. **Authorization to photocopy** material for internal or personal use under circumstances not falling within the fair use provisions of the Copyright Act is granted by AAAS to libraries and other users registered with the Copyright Clearance Center (CCC) Transactional Reporting Service, provided that \$20.00 per article is paid directly to CCC, 222 Rosewood Drive, Danvers, MA 01923. The identification code for *Science* is 0036-8075. *Science* is indexed in the *Reader's Guide to Periodical Literature* and in several specialized indexes.



ADVANCING SCIENCE. SERVING SOCIETY

Science

326 (5955)

Science **326** (5955), 915-1008.

ARTICLE TOOLS

<http://science.sciencemag.org/content/326/5955>

PERMISSIONS

<http://www.sciencemag.org/help/reprints-and-permissions>

Use of this article is subject to the [Terms of Service](#)

Science (print ISSN 0036-8075; online ISSN 1095-9203) is published by the American Association for the Advancement of Science, 1200 New York Avenue NW, Washington, DC 20005. The title *Science* is a registered trademark of AAAS.

Copyright © 2009 The Authors, some rights reserved; exclusive licensee American Association for the Advancement of Science. No claim to original U.S. Government Works.