

Bio**perfection.**

Sigma's Prestige Antibodies[®] could prove
priceless to your research.



Sigma now offers over 10,000 Prestige Antibodies
powered by Atlas Antibodies.

1,700 new Prestige Antibodies are now available! Developed through the Human Protein Atlas Project, Prestige Antibodies are standardized in universal protocols to enhance the efficiency and effectiveness of your research. Each antibody is supported with over 700 immunohistochemistry, immunofluorescence and Western blot images that are all publicly available on the Human Protein Atlas website.

wherebiobegins.com/biomolecules

Prestige Antibodies[®]
Powered by  **ATLAS**
ANTIBODIES

SIGMA-ALDRICH[®]

SIGMA[®] *Where bio begins[™]*
Life Science

Prestige Antibodies powered by Atlas Antibodies is a registered trademark of Sigma-Aldrich and Sigma-Aldrich Biotechnology, LP.

Cancer

Development

Endocrinology

Glycobiology

Immunology

Neuroscience

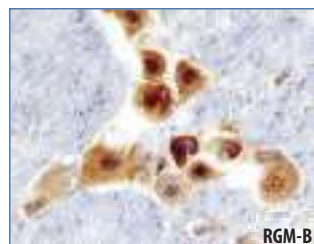
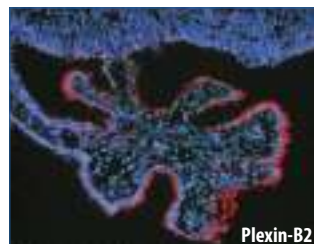
Proteases

Signal Transduction

Stem Cells

R&D Systems Products for Neuroscience Research

R&D Systems offers a wide range of high quality products for neuroscience research. In addition to high performance **antibodies**, we offer the most referenced collection of premium quality **proteins** and **ELISA kits** in the industry. Our catalog also includes primary rat and mouse cortical **stem cells**, and kits for the expansion, differentiation, and identification of neural stem cells.



Performance.
Results.
Progress.



For more information visit our website at www.RnDSystems.com/go/Neuroscience

For research use only. Not for use in diagnostic procedures.

R&D Systems, Inc. www.RnDSystems.com

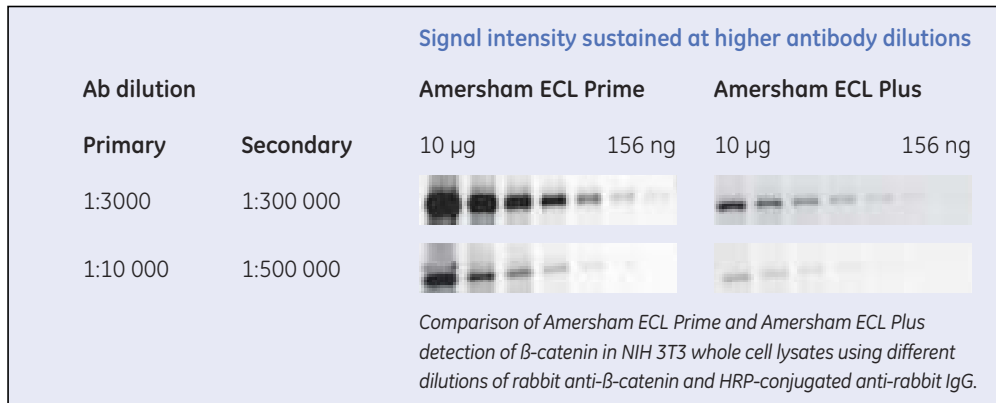
R&D Systems Europe, Ltd. www.RnDSystems.co.uk

R&D Systems China Co., Ltd. www.RnDSystemsChina.com.cn

R&D
SYSTEMS®

Thank you ECL™ Plus, you've been great.

For every success there's a successor. It's called progress. So while we knew we had something special in Amersham™ ECL Plus, our Western blotting team was quietly working on the next generation of detection reagent. The result: a new substrate that operates with superior levels of sensitivity, signal intensity and stability than even its famous predecessor, making it an excellent choice for CCD imagers. **Welcome to ECL Prime.**



Find out more about Amersham ECL Prime at
www.gelifesciences.com/eclprime

Any sample, any application — no limits

Maximize success
with QIAGEN sample technologies

- Innovative, room-temperature sample collection and stabilization
- DNA, RNA, and protein purification from any sample
- Hands-free automated sample preparation
- Reliable genetic, epigenetic, and gene expression analysis from FFPE samples
- Whole genome and transcriptome amplification to overcome sample limitations

ADNA_SampleTech0910511WV

Contact QIAGEN today or visit www.qiagen.com/sample-technologies



Sample & Assay Technologies



Dedication to Science

How is the light wavelength of knowledge calculated? Leica Microsystems has mapped its corporate values. For more information, visit our website.

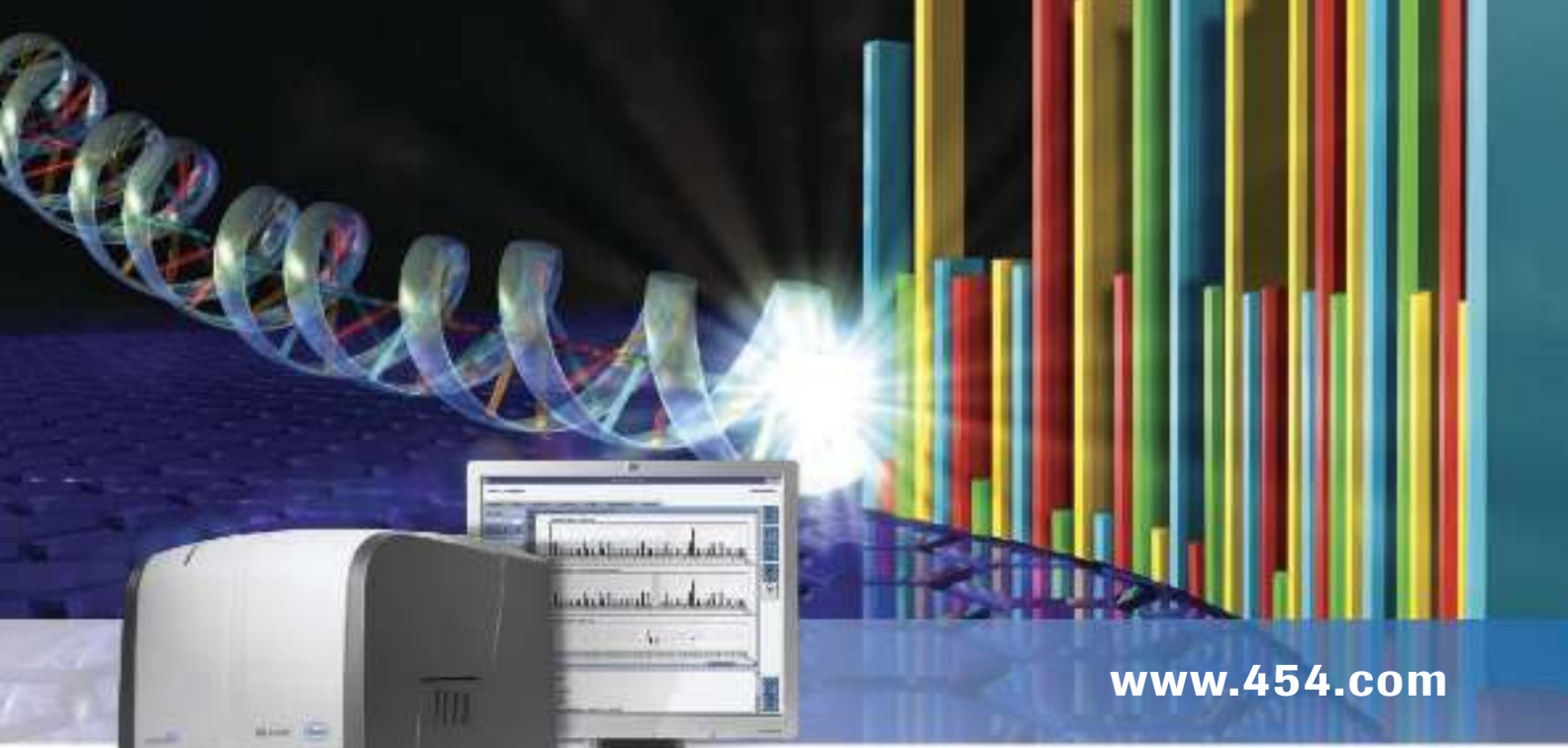
Professor Tanke, why is curiosity a building block of life?

Hans Tanke, a researcher and pioneer of digital fluorescence microscopy, is driven by passionate curiosity. He is Head of the Department of Molecular Cell Biology at Leiden University Medical Center, Netherlands, where he gives young scientists creative freedom: this enables them to develop the ethically responsible dedication with which he himself keeps tracking down the building blocks of life.

www.leica-microsystems.com

Living up to Life

Leica
MICROSYSTEMS



www.454.com

GS Junior Sequencing System

A **NEW** Scale of Sequencing – *Amplicon Sequencing on Your Benchtop*

Amplicon Assay	Samples per Run
HIV Drug Targets (e.g., 16 amplicons covering 5 regions at 1500X [Protease, RT, Integrase, Envelope V3, gp41 heptad repeats])	8
Gene Sequencing (e.g., CFTR, 34 amplicons covering 27 exons at 50X)	48
HLA Sequencing (e.g., high-resolution genotyping at 7 loci)	16
VDJ Sequencing (e.g., for vaccine response or minimal residue detection for known clonality)	8

Figure 1: Get the right depth and coverage for your amplicon project. You can customize your experimental design to maximize data throughput for optimal sample coverage per sequencing run. Examples of various applications and optimum sample number per run are shown for the GS Junior System.

Bring the power of 454 pyrosequencing to your amplicon projects. Now available, the new small-footprint **GS Junior System** generates 70,000 reads per run, and delivers the performance and long reads (up to 500 base pairs) of the GS FLX Titanium chemistry to your benchtop.

- **Detect SNPs, insertions, and deletions.**
- **Discover rare somatic mutations in complex samples based on ultra-deep sequencing of amplicons.**
- **Sequence and analyze collections of human exons for identifications of rare alleles.**
- **Find viral quasispecies present within infected populations.**
- **Identify rare alleles associated with diseases.**

For complete information on the GS Junior System and all of the Roche sequencing solutions, visit www.454.com or contact your local Roche representative today.

**For life science research only.
Not for use in diagnostic procedures.**

454
SEQUENCING





- **Limited offer:**
Centrifuges 5430 and 5424
with free standard rotor!



- **New promotion:**
Centrifuge 5418
with 20 % off!



- **Save big**
with Eppendorf's
Cell Culture Bundles!



- **Buy 3 get 4:**
Eppendorf DNA LoBind
and Protein LoBind Tubes
in a special promotion pack!



Limited offer
Sept. 1–Dec. 31,
2010

*Offers may vary by country. eppendorf® is a registered trademark of Eppendorf AG. All rights reserved, including graphics and images. Copyright © 2010 by Eppendorf AG.

Top Performance!

Save big with Centrifuge Bundles and Eppendorf LoBind™ Tubes

Get top performance!

- **Eppendorf centrifuges** provide top performance in the lab. They are strong, reliable, durable and long lasting. Best results are ensured by tried and trusted technology and latest safety features.
- **Eppendorf DNA LoBind and Protein LoBind Tubes** ensure top performance in terms of highest recovery rates. They provide maximum protection from sample loss – thus improving the results of your assays!

Enjoy great savings!

With our new **Eppendorf Advantage** offers you can get top performance and enjoy great savings on micro-centrifuges, multipurpose centrifuges and LoBind Tubes.

Take advantage now!

Check out our new limited offers and contact your participating Eppendorf Partner today. For full details and dealer contact information, please visit www.eppendorf.com/advantage.

eppendorf
In touch with life

“How do we know
this lead molecule
is novel?”

“SciFinder—
of course.”

Need to assess the novelty of substances?

SciFinder is the answer.

It includes CAS REGISTRY,SM the most comprehensive substance information available, integrated with relevant journal articles and patents.

Give your research team the highest quality and most timely scientific information resource.

Make SciFinder an essential part of your research process.

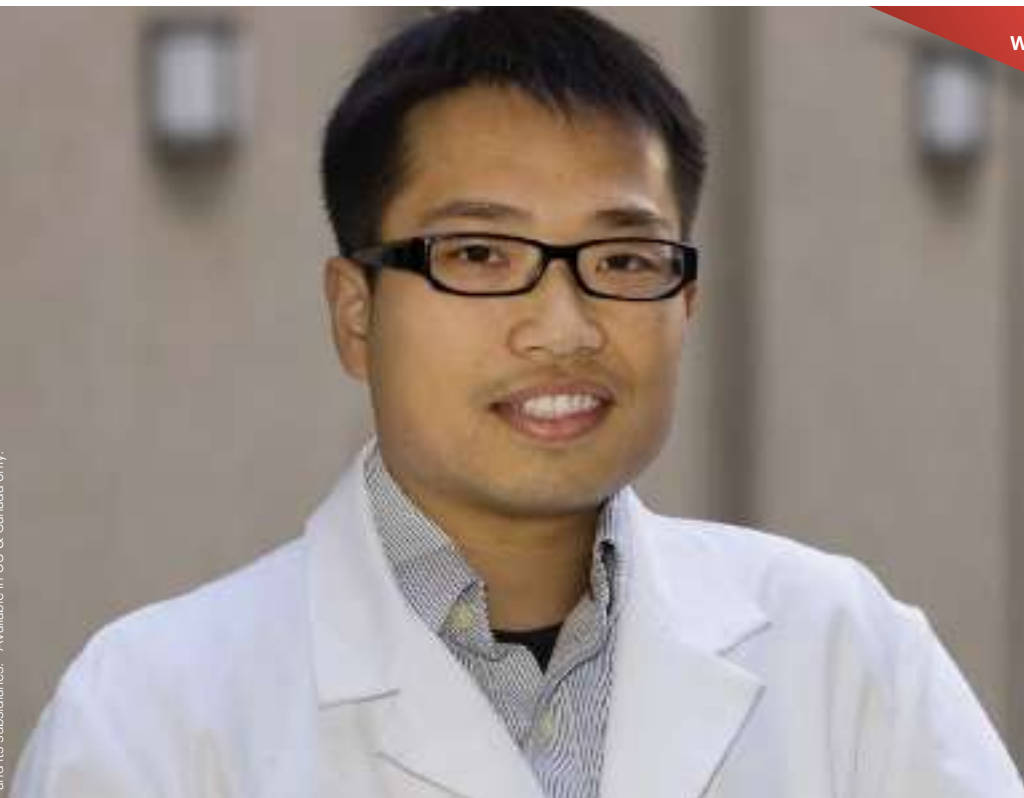
For more information about SciFinder, visit www.cas.org or e-mail help@cas.org.

an essential
SciFinder®—Part of the process.™



CAS is a division of the American Chemical Society

www.cas.org



“I really like this instrument! Reliability and reproducibility are so important.” —Hing Cheong (Henry) Lee, Ph.D.

Emotional reactions to instrumentation from scientists are rare. Yet with Thermo Scientific NanoDrop Spectrophotometers, they are becoming commonplace. That’s because scientists who own a NanoDrop™ are passionate about its simplicity. These instruments reduce analysis time and minimize sample waste with fast, easy and accurate micro-volume nucleic acid and protein sample quantitation. Just ask Dr. Lee:

“With NanoDrop I use less sample. Reproducibility of results is much higher—and I get them in a few seconds. The previous machine I used to measure DNA took much longer, and the results weren’t nearly as reliable. NanoDrop is much faster. It is small, quick and convenient.”

Learn about our special offers including a FREE tee-shirt promotion
www.thermoscientific.com/nanodrop



Thermo Scientific NanoDrop UV-Vis Spectrophotometers offer easy, reliable micro-volume analysis, with sample size as low as 0.5 μ l and measurement time of less than 5 seconds—no dilutions.

INTRODUCING

AAAS MemberCentral



The exclusive new website for the AAAS member community.

AAAS MemberCentral is a new website focused on helping you — the scientists, engineers, educators, students, policymakers, and concerned citizens who make up the AAAS community — connect like never before.

On MemberCentral you can contribute to discussion groups or blogs, participate in a webinar, or share photos of your field research. You can exchange ideas, learn about your fellow members, and gain fresh insights into issues that matter to you the most. MemberCentral is also an easy access point for a wide variety of other AAAS membership benefits, like discounts on cars and books, travel opportunities, and more.

Experience MemberCentral for yourself. Visit MemberCentral.aaas.org today and log in using your *Science* online username and password.



MemberCentral.aaas.org

NEW PRODUCTS FOCUS: ESSENTIAL LAB EQUIPMENT

MANUAL AND ELECTRONIC PIPETTES

The comprehensive range of Sarpette M manual and Sarpette E electronic pipettes come in single-, eight-, and 12-channel configurations. Sarpette M pipettes feature continuously adjustable volumes from either the dispenser button or thumbwheel and offer exceptional accuracy and precision. Lightweight and well balanced for comfortable pipetting, Sarpette M pipettes require low dispensing and tip ejection forces. Multichannel options feature a curved ejector bar and an individual shaft suspension system to further reduce hand strain. Sarpette M pipettes are fully autoclavable. Sarpette E electronic pipettes are controlled by a high-precision motor and microprocessor to ensure smooth and accurate pipetting. Practical, user-friendly operation modes include various mixing, multiple dispensing, and sequential aspirating/dispensing options as well as five speeds and nine memory programs. Sarpette E pipettes feature a large, angled LCD display, an extremely lightweight ergonomic design, and a long-lasting rechargeable lithium ion battery. High-quality pipette tips are offered in a wide-range of packaging and purity options as well as corresponding carousel and linear stands to compliment the Sarpette pipettes.

Sarstedt, Inc.

For info: 800-257-5101 | www.sarstedt.com



MINI CENTRIFUGE

The compact, economical Scie-Plas Mini Centrifuge comes with three different rotors for use in a wide-range of bioscience research applications. Designed with a small footprint to fit easily even where space is limited, this centrifuge model is very easy to use. An on/off switch enables the lid to be closed without starting the unit and when the lid is opened, the centrifuge stops automatically. For added value and versatility, the Scie-Plas Mini Centrifuge includes three rotors: a six-place rotor for 1.5 ml tubes, a 0.2 ml PCR strip rotor, and a 1- by 3-inch slide rotor. A maximum speed of 6,000 rpm/2,000 x g is perfect for quickly spinning down samples, in microgel filtration applications and for microvolume centrifugation.

Scie-Plas

For info: +44-1223-427888 | www.scie-plas.com

SPECTROMETER

FT-IR spectrometer, Nicolet iS5, is designed for users seeking no-compromise, affordable, and compact FT-IR spectroscopy to assist in their product assurance testing, basic troubleshooting, and chemistry teaching. The Nicolet iS5 establishes a new benchmark in small-footprint laboratory FT-IR spectroscopy. Delivering comparable performance to full-size spectrometers, the instrument has an open-architecture sample compartment that accepts a wide variety of sampling accessories. The spectrometer incorporates the award-winning OMNIC software, widely adopted by major industrial manufacturers and forensic laboratories around the world. The Nicolet iS5 spectrometer, its new iD sampling accessories, and OMNIC software solutions for raw materials, impurities, and mixtures identification, create a unique user experience "from sample-in to answer-out."

Thermo Fisher Scientific

For info: 800-532-4752 | www.thermoscientific.com/ftir

MICROPLATE SEALING FILM

The revolutionary microencapsulated clear sealing film for microplates, MicroBurst, circumvents the use of adhesive seals that can easily stick to your glove rather than your microplate. MicroBurst sealing films have been developed to eliminate this problem. With its adhesive encapsulated in millions of tiny spheroids, MicroBurst sealing film is not sticky when first handled and can be quickly and easily moved into position. Only when you are satisfied that the film is in the correct place do you press down hard to burst and activate the MicroBurst adhesive microcapsules. No more mess, no more incorrectly positioned adhesive seals. The clear film has excellent optical properties and once activated, produces a very firm seal which quickly strengths to form a near-permanent seal on your plates. MicroBurst film can be pierced by pipette tips or robot liquid handlers and is temperature stable, making it ideal for PCR work.

Porvair Sciences Ltd.

For info: +44-1372-824290 | www.porvair-sciences.com

LIGHT-SHIELDING GLASSWARE

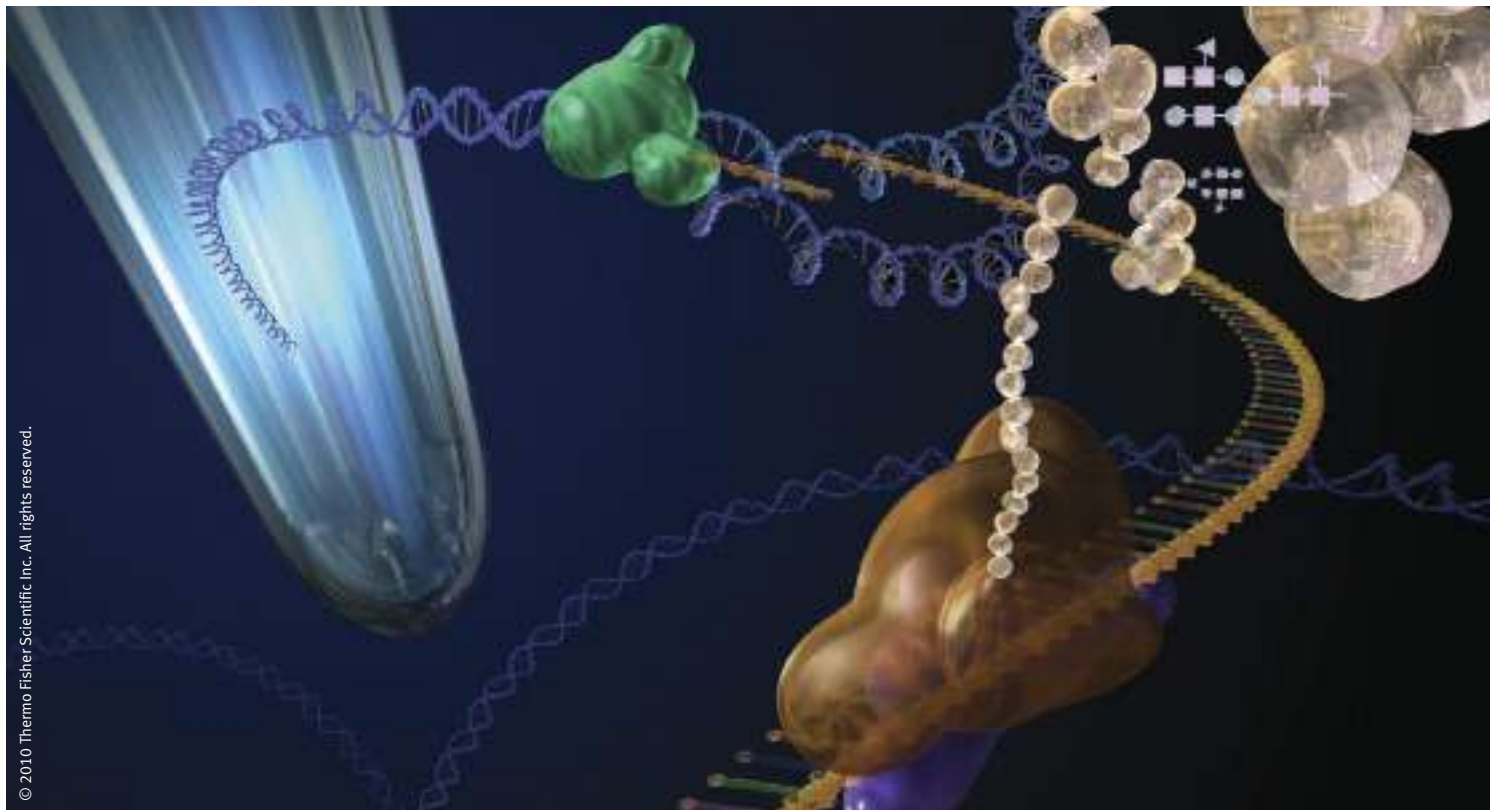
The new VITLAB light-shielding volumetric flasks are made of a specially pigmented polymethyl pentene (PMP) plastic that provides excellent absorption of light. In particular, absorption in the ultraviolet range—below 280 nm and the upper visible range above 580 nm—yet provides sufficient translucency to verify contents and volume, in most applications superior to amber glass. It provides a sunlight protection factor of nearly 20. Flasks are lightweight and break resistant, and provide a cost-effective alternative to glass. Screw-on caps help protect flask contents better than traditional stoppers. Flasks are available in sizes from 10 ml to 1000 ml. All volumes are Class A per DIN EN ISO 1042.

BrandTech Scientific, Inc.

For info: 888-522-2726 | www.brandtech.com

Electronically submit your new product description! Go to www.sciencemag.org/products/newproducts.dtl for more information.

Newly offered instrumentation, apparatus, and laboratory materials of interest to researchers in all disciplines in academic, industrial, and governmental organizations are featured in this space. Emphasis is given to purpose, chief characteristics, and availability of products and materials. Endorsement by *Science* or AAAS of any products or materials mentioned is not implied. When you seek additional information from the manufacturer or supplier, tell them you saw it here.

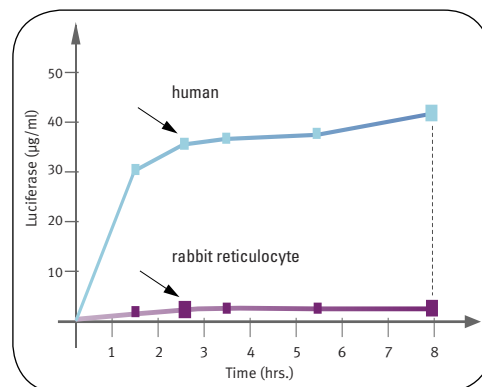


Synthesize functional proteins *in vitro* with human cell-free extracts.

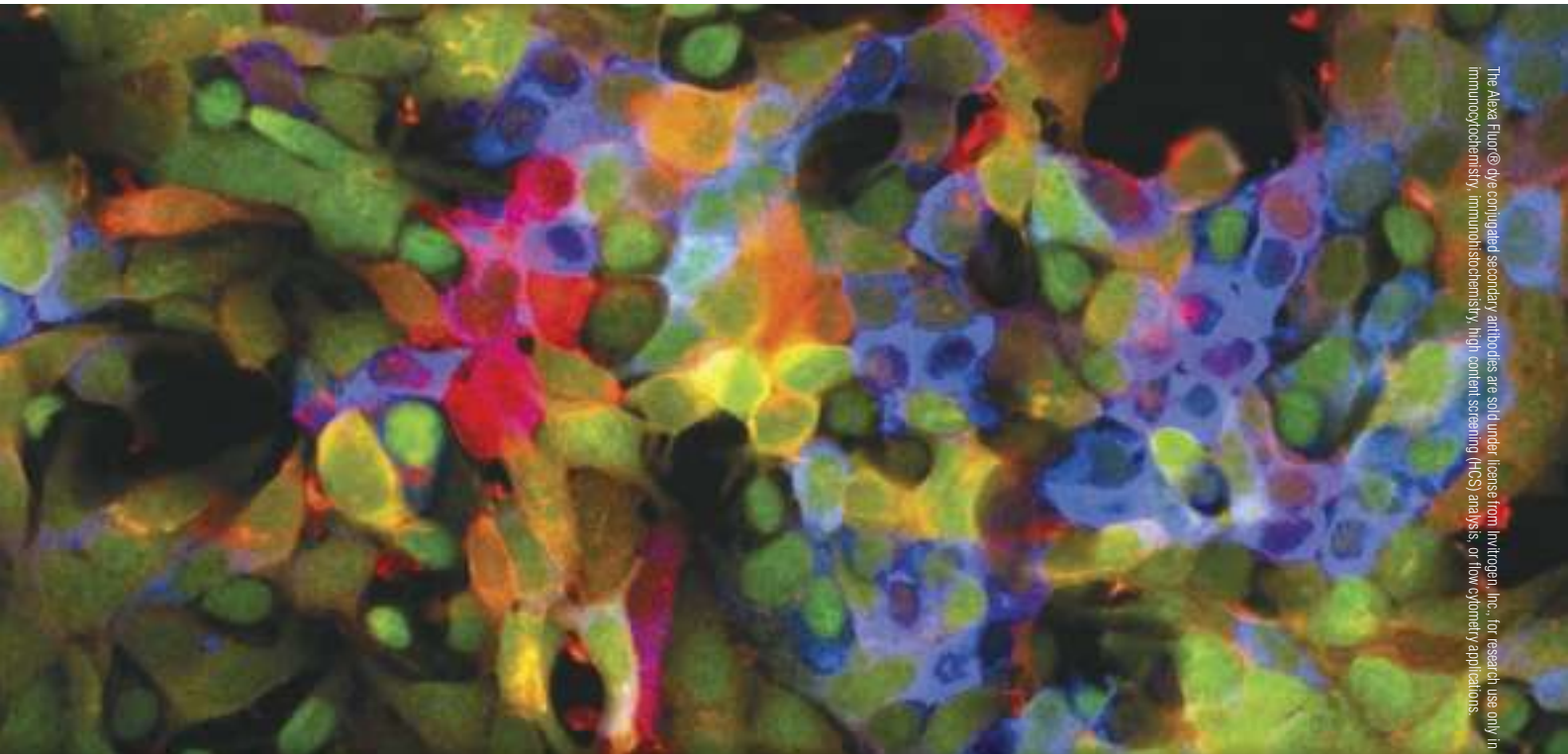
Now there is an alternative for your *in vitro* protein synthesis. The Thermo Scientific Pierce *In Vitro* Translation Systems use human cell-free extracts to produce proteins with post-translational modifications such as glycoproteins. In 90 minutes, our systems produce more protein than rabbit reticulocyte systems.

- Express functional protein from any organism in 90 minutes
- Optimized system for glycoprotein expression available
- Achieve proper post-translational modifications
- Successfully express proteins up to 250 kDa
- Used for IP/co-IP, EMSA, protein labeling or mutant screening

Visit thermoscientific.com/pierce to learn why human cell-free extracts produce better *in vitro* translation results for a variety of applications.



Comparison of luciferase expression in human cell-free extracts and rabbit reticulocyte lysates. The Pierce Human *In Vitro* Protein Expression System improves protein yield up to 15 times greater than rabbit-based systems.



PathScan® Signaling Nodes Multiplex IF Kit

from Cell Signaling Technology

Immunofluorescent analysis of MCF7 (human breast adenocarcinoma) cells insulin-treated for 5 minutes, using PathScan® Signaling Nodes Multiplex IF Kit #8999.

PathScan® Signaling Nodes Multiplex IF Kit #8999 from Cell Signaling Technology provides a novel multiplex assay to simultaneously assess signaling through key pathway nodes (activated-Akt, p44/42, and S6 Ribosomal Protein) using automated imaging or laser scanning high content platforms, or manual immunofluorescence microscopy. The kit provides reagents necessary to perform 100 assays (based on 100 µl assay volume).

- ⚡ The kit allows the analysis of multiple pathway endpoints within a single sample, saving time and reagents.
- ⚡ The kit is produced and optimized in-house with the highest quality antibodies, providing you with the greatest possible specificity and sensitivity.
- ⚡ Technical support is provided by our in house IF group who developed the product and knows it best.

#8999 Kit Targets	Detection Dye	Ex _(max) (nm)	Em _(max) (nm)
Phospho-Akt (Ser473)	Alexa Fluor® 555	555	565
Phospho-p44/42 (Erk1/2) (Thr202/Tyr204)	Alexa Fluor® 488	495	519
Phospho-S6 Ribosomal Protein (Ser235/236)	Alexa Fluor® 647	650	665

for quality products you can trust...
www.cellsignal.com

