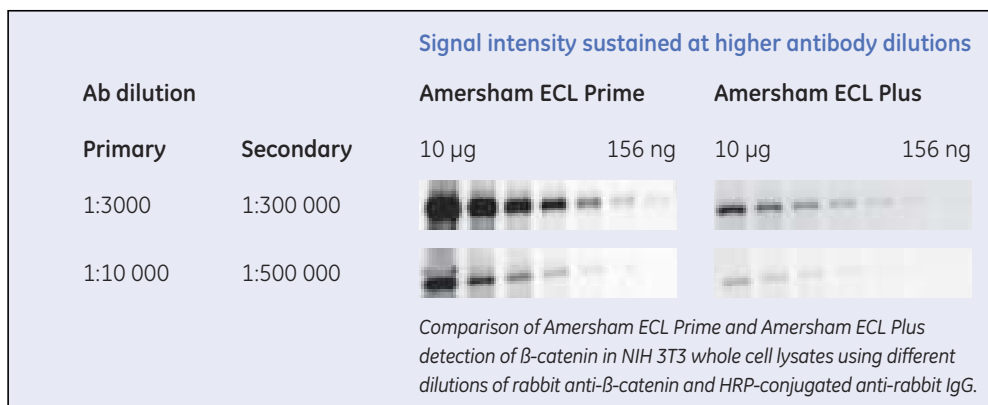


# Thank you ECL™ Plus, you've been great.

For every success there's a successor. It's called progress. So while we knew we had something special in Amersham™ ECL Plus, our Western blotting team was quietly working on the next generation of detection reagent. The result: a new substrate that operates with superior levels of sensitivity, signal intensity and stability than even its famous predecessor, making it an excellent choice for CCD imagers. **Welcome to ECL Prime.**



Find out more about Amersham ECL Prime at  
[www.gelifesciences.com/eclprime](http://www.gelifesciences.com/eclprime)