

Prospective Protein Provider

ProCube

Evolution comes, suddenly.



Bringing unprecedented efficiency to pharmaceutical development:
Introducing ProCube, a service that assists the analysis of protein interactions.

You want to outsource search and quality control processes. But you need the work done quickly, and you want to keep a lid on costs. ProCube is designed to meet the demands of this type of development environment. We offer high-quality, ready-to-use analytical tools based on proprietary specimen testing technology and protein production technology that uses silkworms. This approach streamlines business processes from search to quality control. The evolution of the pharmaceutical development environment starts with Sysmex.

Features of ProCube

- **Validation data**
We provide peace of mind and earn customers' trust by centralizing immobilization work and including interaction analysis results.
- **Multi-variety, high-volume samples**
We can accommodate a broad range of applications using silkworm technology.

We attended 2011 AAPS in Washington D.C. USA from October 23rd to 27th.

procube.sysmex.co.jp

Sysmex Corporation



cell sciences®

cytokine center

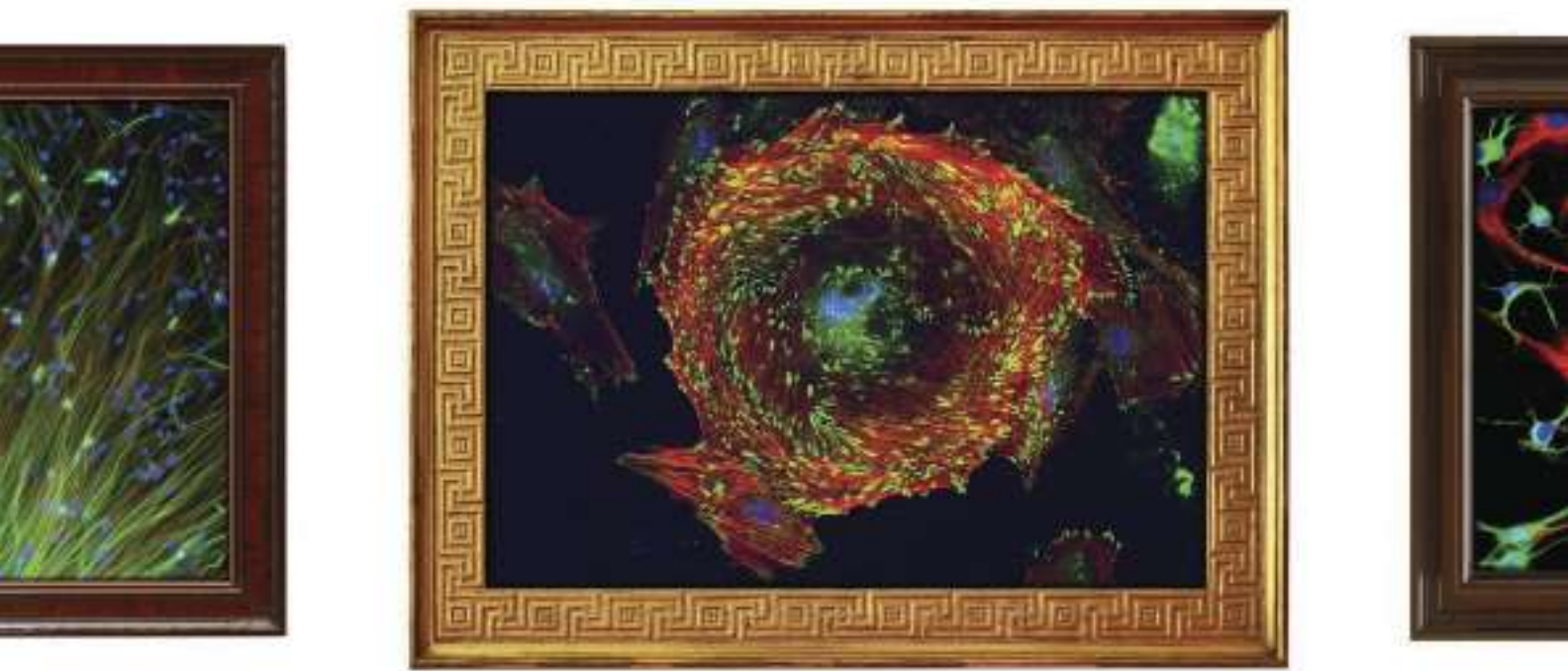
Browse our web site of recombinant proteins, including cytokines, growth factors, chemokines and neurotrophins. Daily shipping and competitive pricing are offered. Bulk quantities of many proteins available. Cell Sciences also carries corresponding antibodies and ELISA kits.



www.cellsciences.com

LIST OF PROTEINS

Table listing various proteins such as Caspase-3, sFlt-1, IL-2, MEK, sRANK, etc. organized in multiple columns.



Is it science or art?

Check out our gallery...

Scientists from around the world have been submitting inspirational images from their cellular research into GE Healthcare's 2011 IN Cell Analyzer Image Competition.

Now it's your chance to vote for your favorite image and receive a limited edition, 2012 Image Competition calendar* featuring twelve of the most popular images as voted by you.

The winning images will be displayed on NBC Universal's high-definition screen in Times Square, New York, so you decide - which image best captures the art in science?

Cast your vote today at www.gelifesciences.com/incellcompetition



imagination at work

* Offer available to the first 2 000 eligible registrants unless prohibited by applicable local law, regulations or General Electric's internal policies or rules relating to governments and healthcare professionals.

This advert features winning images from previous IN Cell Analyzer Image Competitions. GE, imagination at work, and GE monogram are trademarks of General Electric Company. © 2011 General Electric Company—All rights reserved. First published Nov. 2011. GE Healthcare Bio-Sciences AB, Björkgatan 30, SE-751 84 Uppsala, Sweden.

HUMAN HEALTH

ENVIRONMENTAL HEALTH



HELPING YOU DETECT ENVIRONMENTAL THREATS WITH A WORLD OF EXPERTISE

When environmental threats are everywhere, monitoring harmful contaminants and keeping up with changing regulations are a challenge. PerkinElmer's advanced measurement and analysis solutions enable you to determine trace and toxic metals, as well as organic and radioactive contaminants. You can count on our global knowledge and expertise to help you protect our natural resources.

See us in action at www.perkinelmer.com/envirostories1





I help higher education professionals with their
RETIREMENT SAVINGS
every day.

I'm
READY TO HELP
you, too.

Diane Bolden
Fidelity Investment Education Consultant

I'm dedicated to helping higher education professionals feel confident about retirement. It's what I love to do — and I'm here for you, too.

- When you want to talk with someone about how to reach your goals
- When you want to be sure you're making the right choices for your needs
- When you want an ongoing dialogue about how to stay on track

As a leading retirement plan provider for colleges and universities across the country, we're with you at every step. Start with a free, no-obligation consultation with a Fidelity Investment Professional — even if you aren't working with us today.

Meet us today.

866.715.6111
Fidelity.com/meetfidelity

Turn here®



Keep in mind that investing involves risk. The value of your investment will fluctuate over time and you may gain or lose money.

Although consultations are one on one, guidance provided by Fidelity is educational in nature, is not individualized, and is not intended to serve as the primary or sole basis for your investment or tax-planning decisions.

Fidelity Brokerage Services LLC, Member NYSE, SIPC, 900 Salem Street, Smithfield, RI 02917. © 2011 FMR LLC. All rights reserved.

586605.1.0

AAAS Travels

Discover Burma

January 5-17, 2012

Angkor Wat Extension Jan. 17-20



Explore one of Asia's most fascinating locations, from Inle Lake and the fabled

city of Mandalay to the stunning plain of Bagan where thousands of temples dot the savanna.

\$3,795 + air; Angkor Wat \$1,295

Chile & Easter Island

January 25-February 7, 2012

Discover Chilean Patagonia from Puerto Varas and Osorno Volcano to the tidewater San Rafael glacier on board *M/V Skorpions II*. Then fly to Easter Island in the eastern corner of the Polynesian Triangle. From

\$4,710 + air



For a detailed brochure, please call (800) 252-4910

All prices are per person twin share + air



BETCHART EXPEDITIONS Inc.

17050 Montebello Road

Cupertino, California 95014

Email: AAASInfo@betchartexpeditions.com

www.betchartexpeditions.com



AAAS is here –
preparing minority students
for careers in science.

Part of AAAS's mission is to strengthen and diversify the scientific work force. To help achieve this goal, AAAS partners with NSF to present the Historically Black Colleges and Universities Undergraduate Program, a conference where students from HBCUs get experience presenting their research, networking with peers, meeting with representatives from graduate schools, and learning about career opportunities. As a AAAS member, your dues support these efforts. If you're not yet a member, join us. Together we can make a difference.

To learn more, visit
aaas.org/plusyou/hbcuup



Learn how current events are impacting your work.

ScienceInsider, the new policy blog from the journal *Science*, is your source for breaking news and instant analysis from the nexus of politics and science.

Produced by an international team of science journalists, *ScienceInsider* offers hard-hitting coverage on a range of issues including climate change, bioterrorism, research funding, and more.

Before research happens at the bench, science policy is formulated in the halls of government. Make sure you understand how current events are impacting your work. Read *ScienceInsider* today.

www.ScienceInsider.org

ScienceInsider

Breaking news and analysis from
the world of science policy



Science



THERMAL CYCLER

The T100 thermal cycler is a compact, reliable, and economical 96-well polymerase chain reaction instrument with an easy-to-use graphical touchscreen. The T100 thermal cycler is ideally suited for small labs or for scientists who prefer a personal instrument on their bench. The user interface allows researchers to edit, run, and save protocols with ease. The system also provides a way for researchers to stay organized by either storing protocols in personalized folders or exporting them to a USB flash drive. In addition, researchers can expedite their experiments by using the thermal gradient technology on the T100 thermal cycler to optimize assay conditions. The thermal cycler can test eight annealing temperatures simultaneously to determine the optimal temperature for high reaction specificity and yield. The T100 thermal cycler provides accurate and uniform heating for sample volumes between 1 and 100 μL , which leads to consistent results. Complete hermetic sealing of the thermoelectric components ensures long-lasting performance.

Bio-Rad

For info: 800-424-6723 | www.bio-rad.com



ELECTRONIC PIPETTING

Featuring a large color screen, precision joystick, and carousel-like menu, the E4 XLS electronic pipette makes moving between options and settings extremely fast and highly intuitive. In addition to basic pipetting functions, the E4 XLS offers an array of features that range from simple to highly complex. It can be easily programmed for almost any application, from setting up mixing protocols, such as serial dilutions, to volume sequencing, reverse pipetting, and titrating. Also unique to the E4 XLS is its "True Manual" mode, which gives researchers precise, real-time control over aspiration and dispense speed. The E4 XLS meets the highest standards for accuracy and precision. The contoured body, easy-to-reach controls, and exceptionally even balance minimize fatigue, even after hours of use. The E4 XLS is available as a single channel, multichannel with 8 or 12 channels, and 6- or 8-channel adjustable spacer in a wide range of volumes.

Rainin

For info: 800-472-4646 | www.rainin.com

GEL DOCUMENTATION SYSTEM

The new GENi² gel documentation system is ideal for scientists wanting to produce accurate images of fluorescent DNA gels, as well as fluorescent protein gels, in seconds. The versatile GENi² can be used for many DNA and protein gel imaging applications. The system features a compact darkroom containing a 2 megapixel resolution camera, motor-driven lens, and six position motorized filter wheel, all controlled by an internal high-speed processor. To quickly set up image capture, image manipulation, and image rotation, researchers use an integrated intuitive touchscreen rather than an external computer, meaning the system takes up minimal bench space. The GENi² darkroom comes complete with a slide-out trans-illuminator and white light table for visualizing DNA and protein gels. The GeneTools image analysis software comes free of charge with the system, allowing scientists to accurately analyze their images.

Syngene

For info: 800-686-4407 | www.syngene.com

FLOW CYTOMETER

COPAS large particle flow cytometers can analyze and sort objects that are too large or too fragile for traditional flow cytometers. Lower operating pressures and soft-touch air-jet diverter technology means even delicate samples like adipocytes or stem cell clusters are dispensed intact and viable. The new HTS Option package is designed for high throughput screening applications involving large numbers of objects to be sorted into large numbers of microtiter output plates. This option can be added to any new COPAS or BioSorter model and includes liquid level sensors, leak, and clog detectors as well as automatic sample pressure control for walk-away operation. The system stops and activates status lights to notify an operator when reservoirs need refilling or other attention is required. A software option can "slave" the system to a robotic plate handler.

Union Biometrica

For info: 508-893-3115 | www.unionbio.com

HOTPLATE SAFETY SHIELD

The new Compact Lab Safety Shield fits neatly around any stirrer hotplate to provide robust, convenient protection from splashes, aerosols, and spills. Ideal for use where fume hood space is at a premium, the Safety Shield offers additional protection for chemists in the event of a tube or cap failure under pressure, even if the fume hood sash is raised. Manufactured from 5 mm polycarbonate, the Safety Shield is resistant to a range of commonly used laboratory solvents and is temperature-resistant to 170°C. Designed with a small footprint to maximize fume hood space, the shield maintains access to hotplate controls and gives good all-round visibility of the reaction or process. In addition to giving essential protection in applications such as heated parallel reactions in tubes, especially those operating under pressure, the device also shields reactions from the cooling effect of ventilation.

Asynt

For info: +44-(0)-1638-781709 | www.asynt.com

Electronically submit your new product description or product literature information! Go to www.sciencemag.org/products/newproducts.dtl for more information.

Newly offered instrumentation, apparatus, and laboratory materials of interest to researchers in all disciplines in academic, industrial, and governmental organizations are featured in this space. Emphasis is given to purpose, chief characteristics, and availability of products and materials. Endorsement by *Science* or AAAS of any products or materials mentioned is not implied. Additional information may be obtained from the manufacturer or supplier.

AAAS, publisher of *Science*, thanks the sponsors and supporters of the 2012 Annual Meeting

Presenting sponsor



SUBARU

Gold



EUROPEAN COMMISSION
European Research Area



a place of mind
THE UNIVERSITY OF BRITISH COLUMBIA

Silver



Bronze



Council of Canadian Academies
Conseil des académies canadiennes

AAAS thanks  THE KAVLI FOUNDATION
for its generous support of the Science Journalism Awards

Act Now ... Registration Rates Go Up in January

Registration

Discounted advance registration rates are available until Thursday, 26 January 2012.

Take advantage of unlimited access to all symposia, seminars, topical lectures, plenary events, career workshops, the International Exhibition, and a variety of networking opportunities.

Professional

\$295 Members/ \$399 Non-Members

Postdoc

\$235 Members/\$335 Non-Members

K-12 Teacher

\$235 Members/\$335 Non-Members

Emeritus

\$235 Members/\$335 Non-Members

Student

\$60 Members/\$90 Non-Members

After 26 January 2012, on-site rates apply.
For more information visit
www.aaas.org/meetings.

Housing

Special room rates and benefits are available to Annual Meeting registrants.

Fairmont Hotel Vancouver

Rate: \$189 CAD single/double

Fairmont Pacific Rim

Rate \$225 CAD single/double

Fairmont Waterfront

Rate: \$202 CAD single/double

Hyatt Regency Vancouver

Rate: \$195 CAD single/double

Pan Pacific Vancouver

Rate: \$208 CAD single/double

Vancouver Marriott Pinnacle Downtown Hotel

Rate: \$195 CAD single/double

Westin Bayshore

Rate: \$199 CAD single/double

Rooms are available on a first-come, first-served basis until 24 January 2012.

44

best practices for overcoming skepticism post-Climategate.

One more data point on why you should spend more time at membercentral.aaas.org. There you can enjoy webinars, videos, blogs, discounts, and downloads geared for people who prefer content based on empirical evidence.

membercentral.aaas.org



Cancer

Development

Endocrinology

Glycobiology

Immunology

Neuroscience

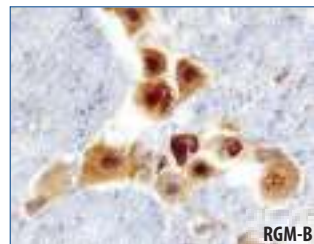
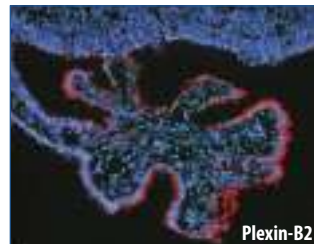
Proteases

Signal Transduction

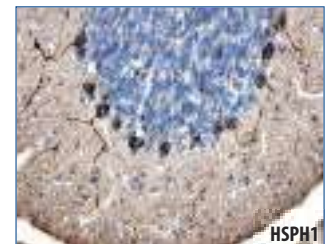
Stem Cells

R&D Systems Products for Neuroscience Research

R&D Systems offers a wide range of high quality products for neuroscience research. In addition to high performance **antibodies**, we offer the most referenced collection of premium quality **proteins** and **ELISA kits** in the industry. Our catalog also includes primary rat and mouse cortical **stem cells**, and kits for the expansion, differentiation, and identification of neural stem cells.



Performance.
Results.
Progress.



For more information visit our website at www.RnDSystems.com/go/Neuroscience

For research use only. Not for use in diagnostic procedures.

R&D Systems, Inc. www.RnDSystems.com

R&D Systems Europe, Ltd. www.RnDSystems.co.uk

R&D Systems China Co., Ltd. www.RnDSystemsChina.com.cn

R&D
SYSTEMS®