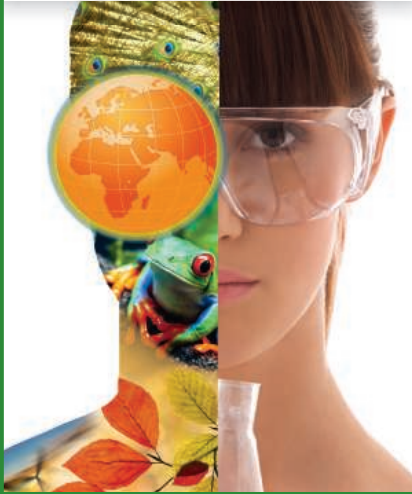


WOMEN IN SCIENCE

forging
new pathways in
green
science



Read inspiring stories of women working in “Green Science” who are blending a unique combination of enthusiasm for science and concern for others to make the world a better place.

Download this
free booklet
[ScienceCareers.org/
L'OrealWiS](http://ScienceCareers.org/L'OrealWiS)



This booklet is brought to you by the
AAAS/Science Business Office
in partnership with the
L'Oreal Foundation



EMBL offers a highly collaborative, uniquely international culture. It fosters top quality, interdisciplinary research by promoting a vibrant environment consisting of young, independent researchers with access to outstanding graduate students and postdoctoral fellows. EMBL is an inclusive, equal opportunity employer offering attractive conditions and benefits appropriate to an international research organisation.

Team Leader – Head of Electron Microscopy Core Facility

The post holder will lead a mixed service and research team with currently eight members providing advanced electron microscopy (EM) service, including electron tomography and correlative light and electron microscopy, to EMBL and external users from EMBL's member states. Furthermore, the facility – based in Heidelberg, Germany – regularly organises courses to train scientists in EM methods and actively collaborates with industrial partners to develop new applications of EM.

It is desirable that the future Team Leader has an interest in EM methods development in order to maintain the technology at the cutting edge and extend the facility's service portfolio to enable new biological applications (e.g. new 3D EM methods, automation for high throughput EM, new correlative EM methods or new data analysis methods). Methods development could be driven by an independent interest in biological questions or by a keen interest in scientific collaborations with biological research groups at EMBL. If appropriate, a joint appointment as a research team leader in one of EMBL's biological research units is foreseen to strengthen and support these interactions.

The successful candidate should have in-depth knowledge and broad experience in EM methods, including data analysis. Excellent organisational skills, experience in EM service & training and strong skills to manage a team of technical and scientific personnel will be essential. The Team Leader should have excellent communication skills and a strong motivation to work in the multidisciplinary and collaborative environment of EMBL. Experience in collaborations with industrial partners will be an asset. Fluency in English as the working language of EMBL is required.

Please apply online through www.embl.org/jobs and include a cover letter, CV and a concise description of research interests and future research plans. Please also arrange for 3 letters of recommendation to be emailed to references@embl.de at the latest by 10 June 2012.

Interviews are planned for 11, 12 and 13 July 2012.

Further details on Team/Group Leader appointments can be found under www.embl.org/gl_faq.

For further information about the position and about research at EMBL please visit ...

www.embl.org