

## EDITORIAL

- 959 Cultivating Global Science  
*Subra Suresh*

## NEWS OF THE WEEK

- 964 A roundup of the week's top stories

## NEWS & ANALYSIS

- 967 Dams Along Sudanese Nile Threaten Ancient Sites
- 968 Senate Bills Would Make Room for More STEM Graduates
- 969 NSF's 'Big Pitch' Tests Anonymized Grant Reviews
- 970 Homegrown Organic Matter Found on Mars, But No Life  
*>> Science Express Report by A. Steele et al.*
- 971 Military's Plan to Buy Biofuels Hits Roadblock in U.S. House
- 972 NSF Gives Clinical Students a Shot at Winning Graduate Fellowships

## NEWS FOCUS

- 973 An Evolutionary Theory of Dentistry: The Burdens of Being a Biped  
*>> Science Podcast*
- 976 The Biology of Genomes Meeting: Single-Cell Sequencing Tackles Basic and Biomedical Questions  
HDL Itself Does Not Prevent Heart Attacks

## LETTERS

- 978 Support for Greece  
*H. Z. Hausen*  
"Two Heads Are Better" Stands to Reason  
*H. Mercier and D. Sperber*
- 979 Life in Science: The Noblest Lesson  
*R. Sinclair*

## BOOKS ET AL.

- 980 The Power of Habit  
*C. Duhigg, reviewed by W. Wood*
- 981 Measuring the Universe  
*M. Kukula and R. Higgitt, curators, reviewed by D. Dixon*

## POLICY FORUM

- 982 From "Science in Europe" to "European Science"  
*M. Nedeva and M. Stampfer*

## PERSPECTIVES

- 984 Pushing Your Back into Place  
*B. Bowerman and S. M. O'Rourke*  
*>> Research Article p. 999*
- 985 Guided Tour to the Heart of RISC  
*E. Kaya and J. A. Doudna*  
*>> Report p. 1036*
- 986 Resolving Some Old Problems in Protein Crystallography  
*P. Evans*  
*>> Reports pp. 1030 and 1032*
- 988 Kinship and Human Thought  
*S. C. Levinson*  
*>> Brevia p. 998; Report p. 1049*
- 989 Enter the Majorana Fermion  
*P. W. Brouwer*  
*>> Report p. 1003*
- 990 Systems Biology, Metabolomics, and Cancer Metabolism  
*M. Tomita and K. Kami*  
*>> Report p. 1040*
- 991 An Avian Magnetometer  
*M. Winklhofer*  
*>> Report p. 1054*

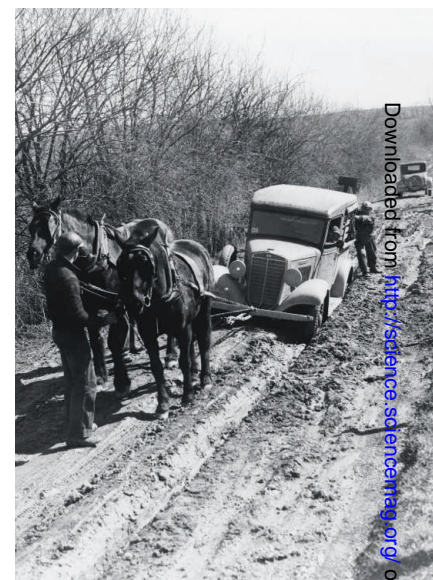
## SCIENCE PRIZE ESSAY

- 993 Learning Biology by Recreating and Extending Mathematical Models  
*H. J. Chiel et al.*

CONTENTS continued >>

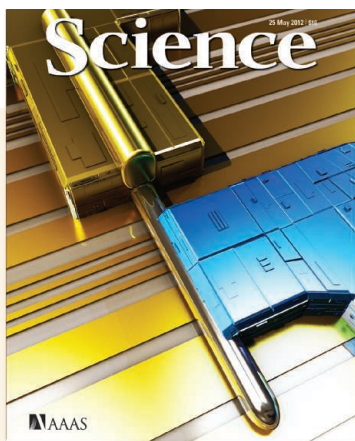


page 973



page 980

Downloaded from <http://science.sciencemag.org/> on May 23, 2019



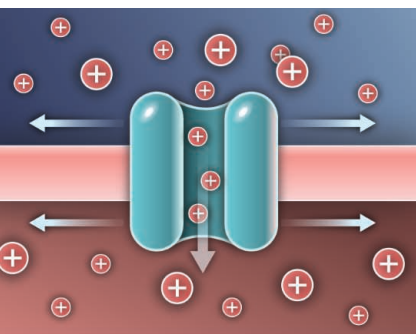
## COVER

Artist's rendering of an electronic device hosting Majorana fermions. The semiconducting nanowire (cylindrical structure) has a diameter of 100 nanometers and lies atop a gate structure consisting of many metallic stripes. The nanowire is contacted at the top with a gold electrode and at the bottom with a superconducting electrode (shown in blue). See page 1003.

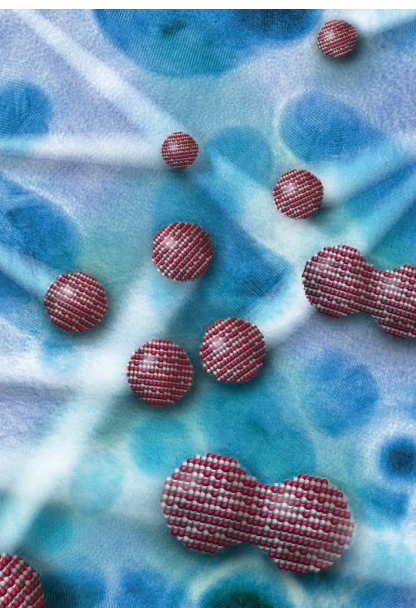
Image: V. Mourik, K. Zuo, S. M. Frolov, S. R. Plissard, E. P. A. M. Bakkers, L. P. Kouwenhoven, with assistance from [www.avalondesigns.nl](http://www.avalondesigns.nl)

## DEPARTMENTS

- 956 This Week in *Science*
- 961 Editors' Choice
- 963 *Science* Staff
- 997 AAAS News & Notes
- 1058 New Products
- 1059 *Science* Careers



pages 991 &amp; 1054



pages 1011 &amp; 1014

**BREVIA**

- 998** Predicting Pragmatic Reasoning in Language Games  
*M. C. Frank and N. D. Goodman*  
A Bayesian inference model predicts how listeners decode communications.  
>> *Perspective p. 988; Report p. 1049*

**RESEARCH ARTICLE**

- 999** Growing Microtubules Push the Oocyte Nucleus to Polarize the *Drosophila* Dorsal-Ventral Axis  
*T. Zhao et al.*  
The addition of tubulin monomers to microtubules provides the force to relocate the oocyte nucleus.  
>> *Perspective p. 984*

**REPORTS**

- 1003** Signatures of Majorana Fermions in Hybrid Superconductor-Semiconductor Nanowire Devices  
*V. Mourik et al.*  
Theoretically predicted particles that double as their own antiparticles emerge in a superconductor-coupled indium antimonide nanowire.  
>> *Perspective p. 989*
- 1007** Unidirectional Growth of Microbumps on (111)-Oriented and Nanotwinned Copper  
*H.-Y. Hsiao et al.*  
Oriented copper grains grown using direct-current electroplating serve as a template for intermetallic microbumps.
- 1011** Real-Time Imaging of Pt<sub>3</sub>Fe Nanorod Growth in Solution  
*H.-G. Liao et al.*  
An in situ liquid stage is used to study the formation of nanowires from solution in a transmission electron microscope.
- 1014** Direction-Specific Interactions Control Crystal Growth by Oriented Attachment  
*D. Li et al.*  
Iron oxyhydroxide nanoparticles rotate until finding a perfect lattice match with a neighboring particle to grow.
- 1018** Large-Pore Apertures in a Series of Metal-Organic Frameworks  
*H. Deng et al.*  
Metal-organic frameworks with hexagonal channel pores up to almost 100 angstroms in diameter have been synthesized.
- 1023** Linking Petrology and Seismology at an Active Volcano  
*K. Saunders et al.*  
Volcanic minerals from a Mount St. Helens eruption reveal a causal relationship between magma processes and seismicity.
- 1028** Temperature-Dependent Alterations in Host Use Drive Rapid Range Expansion in a Butterfly  
*R. M. Pateman et al.*  
A warmer UK has enabled the brown argus butterfly to expand its range by feasting on the geranium.
- 1030** Linking Crystallographic Model and Data Quality  
*P. A. Karplus and K. Diederichs*  
A statistical method places model and data quality on the same scale and indicates how far one can model.
- 1032** Structures from Anomalous Diffraction of Native Biological Macromolecules  
*Q. Liu*  
Don't get MAD or be SAD; try lower energy.  
>> *Perspective p. 986*
- 1036** The Crystal Structure of Human Argonaute2  
*N. T. Schirle and I. J. MacRae*  
The structure of the core protein of the human RNA interference machinery is determined at high resolution.  
>> *Perspective p. 985*
- 1040** Metabolite Profiling Identifies a Key Role for Glycine in Rapid Cancer Cell Proliferation  
*M. Jain et al.*  
Rapidly growing cancer cells rely on the amino acid glycine to make nucleotides.  
>> *Perspective p. 990*
- 1045** FKF1 Conveys Timing Information for CONSTANS Stabilization in Photoperiodic Flowering  
*Y. H. Song et al.*  
A plant protein sensitive to blue light links longer afternoons to more flowering.
- 1049** Kinship Categories Across Languages Reflect General Communicative Principles  
*C. Kemp and T. Regier*  
The systems of terms used in different languages to describe kin are optimized for simplicity and informativeness.  
>> *Perspective p. 988; Brevia p. 998; Science Podcast*
- 1054** Neural Correlates of a Magnetic Sense  
*L.-Q. Wu and J. D. Dickman*  
Neurons in a pigeon's brain encode the direction and intensity of the geomagnetic field.  
>> *Perspective p. 991*

## SCIENCEONLINE

## SCIENCEEXPRESS

[www.sciencexpress.org](http://www.sciencexpress.org)

**A Mitochondrial Pyruvate Carrier Required for Pyruvate Uptake in Yeast, *Drosophila*, and Humans**  
*D. K. Bricker et al.*

The genes encoding two components of the pyruvate transporter in mitochondria have been identified.  
10.1126/science.1218099

**Identification and Functional Expression of the Mitochondrial Pyruvate Carrier**  
*S. Herzig et al.*

Two components of the mitochondrial pyruvate transporter confer transport activity when expressed in bacteria.  
10.1126/science.1218530

**Recurrent Hemizygous Deletions in Cancers May Optimize Proliferative Potential**  
*N. L. Solimini et al.*

The genomes of cancer cells have preferentially lost genes that inhibit cell growth.  
10.1126/science.1219580

**The Structures of COPI-Coated Vesicles Reveal Alternate Coatomer Conformations and Interactions**

*M. Faini et al.*

The flexible coatomer complex makes contact with a variable number of neighbors and coats vesicles of variable size.  
10.1126/science.1221443

**Structural Basis for Preceptor Modulation of Plant Hormones by GH3 Proteins**  
*C. S. Westfall et al.*

Crystal structures of plant GH3 proteins reveal how these enzymes accommodate jasmonates, auxins, and benzoates.  
10.1126/science.1221863

**A Reduced Organic Carbon Component in Martian Basalts**

*A. Steele et al.*

Analysis of 11 martian meteorites reveals complex hydrocarbons associated with magmatic minerals in 10 of them.  
10.1126/science.1220715

>> *News story p. 970*

**Hesperian Age for Western Medusae Fossae Formation, Mars**

*J. R. Zimbelman and S. P. Scheidt*

Counts of impact craters provide age for a region on Mars close to the landing site of rover Curiosity.  
10.1126/science.1221094

## SCIENCENOW

[www.sciencenow.org](http://www.sciencenow.org)

Highlights From Our Daily News Coverage

**Life at the Top Can Be Good for Your Health**

A study suggests that high-ranking baboons have stronger immune systems.

[http://scim.ag/Immune\\_Systems](http://scim.ag/Immune_Systems)

**Just a Spoonful of Castor Oil**

A study reveals the molecular mechanism of castor oil.

[http://scim.ag/Castor\\_Oil](http://scim.ag/Castor_Oil)

**Barely Breathing Microbes Still Living in 86-Million-Year-Old Clay**

Organisms deep beneath the sea floor survive on minuscule amounts of oxygen.

<http://scim.ag/Microbes-Oxygen>

## SCIENCE SIGNALING

[www.sciencesignaling.org](http://www.sciencesignaling.org)

The Signal Transduction Knowledge Environment

**22 May issue: <http://scim.ag/ss052212>**

**RESEARCH ARTICLE: Interferon- $\beta$  Therapy Against EAE Is Effective Only When Development of the Disease Depends on the NLRP3 Inflammasome**

*M. Inoue et al.*

PODCAST

*M. L. Shinohara and A. M. VanHook*

Characterization of an animal model may explain why not all patients with multiple sclerosis respond to interferon- $\beta$ .

**PERSPECTIVE: Structure of the First Sphingosine 1-Phosphate Receptor**

*A. L. Parrill et al.*

The lipid sphingosine 1-phosphate may laterally diffuse through the membrane to bind a receptor.

**PERSPECTIVE: Revisiting Channel Allostery—A Coherent Mechanism in IP<sub>3</sub> and Ryanodine Receptors**

*K. Hamada and K. Mikoshiba*

Structural analyses suggest a similar gating mechanism in the IP<sub>3</sub> and ryanodine receptors.

## SCIENCE TRANSLATIONAL MEDICINE

[www.sciencetranslationalmedicine.org](http://www.sciencetranslationalmedicine.org)

Integrating Medicine and Science

**23 May issue: <http://scim.ag/stm052312>**

**FOCUS: Clinician-Investigators as Translational Bioscientists—Shaping a Seamless Identity**

*E. R. Edelman and K. LaMarco*

**COMMENTARY: Risk and Return for the Clinician-Investigator**

*S. Henrickson and D. Altshuler*

PODCAST

*E. R. Edelman and K. LaMarco*

In this first of a series, senior scientists counsel early-career clinician-investigators on molding a successful research career.

**RESEARCH ARTICLE: Effective Adjunctive Therapy by an Innate Defense Regulatory Peptide in a Preclinical Model of Severe Malaria**

*A. H. Achtman et al.*

Anti-inflammatory drugs based on host defense peptides ameliorate malaria in mice.

**RESEARCH ARTICLE: Adenosine A<sub>2A</sub> Receptor Activation Prevents Wear Particle-Induced Osteolysis**

*A. Mediero et al.*

Bone damage caused by particles from orthopedic implants is prevented by an adenosine receptor agonist in mice.

**RESEARCH ARTICLE: PTH/PTHrP and Vitamin D Control Antimicrobial Peptide Expression and Susceptibility to Bacterial Skin Infection**

*B. Muehleisen et al.*

Vitamin D and parathyroid hormone work together to maximize innate immune resistance to skin infections.

**RESEARCH ARTICLE: Modeling the Dynamic Relationship Between HIV and the Risk of Drug-Resistant Tuberculosis**

*R. Sergeev et al.*

**FOCUS: TB and HIV—Deadly Liaison or Manageable Threat?**

*B. G. Williams*

HIV-coinfected TB patients are less likely to be affected by drug-resistant TB.

**LETTERS: Comments and Response on “The Predictive Capacity of Personal Genome Sequencing”**

*Comments: C. B. Begg and M. C. Pike;*

*D. Golan and S. Rosset; E. J. Topol*

*Response: B. Vogelstein et al.*

## SCIENCE CAREERS

[www.sciencereers.org/career\\_magazine](http://www.sciencereers.org/career_magazine)

Free Career Resources for Scientists

**Experimental Error: The Unwritten Rules of Journalism**

*A. Ruben*

The key to understanding the way the media covers science is to know the rules to which science journalists adhere.

[http://scim.ag/EE\\_SciWriters](http://scim.ag/EE_SciWriters)

**Working for a Contract Research Organization**

*N. Lubick*

Scientists interested in any phase of drug research and development can find opportunities within CROs.

[http://scim.ag/CRO\\_Work](http://scim.ag/CRO_Work)

**Content Collection: Lab Management**

*E. Pain*

New group leaders need to learn how to manage people, projects, finances, and more.

[http://scim.ag/CC\\_LabManagement](http://scim.ag/CC_LabManagement)

## SCIENCE PODCAST

[www.sciencemag.org/multimedia/podcast](http://www.sciencemag.org/multimedia/podcast)

Free Weekly Show

On the 25 May *Science* Podcast: classifying cousins, the evolution of bad teeth, where science and comedy meet, and more.

**SCIENCE (ISSN 0036-8075) is published weekly on Friday, except the last week in December, by the American Association for the Advancement of Science, 1200 New York Avenue, NW, Washington, DC 20005.** Periodicals Mail postage (publication No. 484460) paid at Washington, DC, and additional mailing offices. Copyright © 2012 by the American Association for the Advancement of Science. The title SCIENCE is a registered trademark of the AAAS. Domestic individual membership and subscription (51 issues): \$149 (\$74 allocated to subscription). Domestic institutional subscription (51 issues): \$990; Foreign postage extra: Mexico, Caribbean (surface mail) \$55; other countries (air assist delivery) \$85. First class, airmail, student, and emeritus rates on request. Canadian rates with GST available upon request, GST #1254 88122. Publications Mail Agreement Number 1069624. **Printed in the U.S.A.**

**Change of address:** Allow 4 weeks, giving old and new addresses and 8-digit account number. **Postmaster:** Send change of address to AAAS, P.O. Box 96178, Washington, DC 20090-6178. **Single-copy sales:** \$10.00 current issue, \$15.00 back issue prepaid includes surface postage; bulk rates on request. **Authorization to photocopy** material for internal or personal use under circumstances not falling within the fair use provisions of the Copyright Act is granted by AAAS to libraries and other users registered with the Copyright Clearance Center (CCC) Transactional Reporting Service, provided that \$30.00 per article is paid directly to CCC, 222 Rosewood Drive, Danvers, MA 01923. The identification code for *Science* is 0036-8075. *Science* is indexed in the *Reader's Guide to Periodical Literature* and in several specialized indexes.



ADVANCING SCIENCE. SERVING SOCIETY

# Science

**336 (6084)**

*Science* **336** (6084), 956-1058.

**ARTICLE TOOLS**

<http://science.sciencemag.org/content/336/6084>

**SUPPLEMENTARY  
MATERIALS**

<http://science.sciencemag.org/content/suppl/2012/05/24/336.6084.DC1>

**PERMISSIONS**

<http://www.sciencemag.org/help/reprints-and-permissions>

Use of this article is subject to the [Terms of Service](#)

---

*Science* (print ISSN 0036-8075; online ISSN 1095-9203) is published by the American Association for the Advancement of Science, 1200 New York Avenue NW, Washington, DC 20005. 2017 © The Authors, some rights reserved; exclusive licensee American Association for the Advancement of Science. No claim to original U.S. Government Works. The title *Science* is a registered trademark of AAAS.