

## Johns Hopkins University Medical School

The Medical School is an Integral Part of the University and is in the Closest Affiliation with the Johns Hopkins Hospital.

### ADMISSION

Candidates for admission must be graduates of approved colleges or scientific schools with at least two years' instruction, including laboratory work in chemistry, and one year each in physics and biology, together with evidence of a reading knowledge of French and German.

Each class is limited to 75 students, men and women being admitted on the same terms. Except in unusual circumstances, applications for admission will not be considered after July 1st.

If vacancies occur, students from other institutions desiring advanced standing may be admitted to the second or third year provided they fulfill our requirements and present exceptional qualifications.

### INSTRUCTION

The academic year begins the Tuesday nearest October 1, and closes the second Tuesday in June. The course of instruction occupies four years and especial emphasis is laid upon practical work in the laboratories, in the wards of the Hospital and in the dispensary.

### TUITION

The charge for tuition is \$300 per annum, payable in three installments. There are no extra fees except for rental of microscope, certain expensive supplies, and laboratory breakage.

The annual announcement and application blanks may be obtained by addressing the

Dean of the Johns Hopkins Medical School,  
Washington and Monument Sts., Baltimore, Md.

Summer Work for Graduates in Medicine  
Beginning Monday, June 2d, and ending Saturday, July 12th, a course in medical diagnosis, including laboratory exercises in clinical pathology and demonstrations in pathological anatomy, will be offered. The course will be limited to thirty students, fee \$100. Applications should be made to the Dean's Office.

## School of Medicine Western Reserve University

of Cleveland, Ohio

**HIGH STANDARD OF ADMISSION\***  
**RESTRICTED CLASSES**  
**THOROUGH INSTRUCTION**  
**LARGE CLINICAL FACILITIES**  
**HIGH STANDARD OF SCHOLARSHIP**

The 1924-25 session will open in the new medical building.

\* Admission confined to students having academic degrees and to Seniors in Absentia.

For information address:

**THE REGISTRAR**

1353 E. 9TH ST.

CLEVELAND, OHIO

## YALE UNIVERSITY School of Medicine

Affiliated with the New Haven Hospital  
and New Haven Dispensary

112TH SESSION

Reorganized on a full-time basis

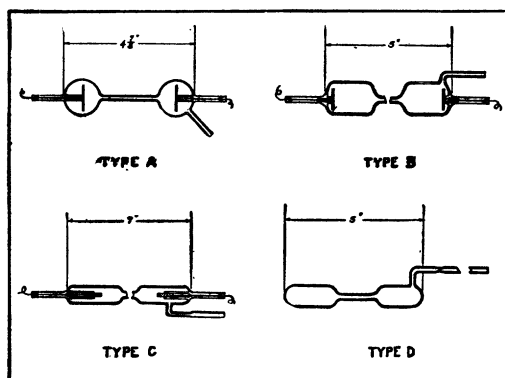
**Entrance Requirements:** A minimum of three years (or its equivalent) of college including general biology, physics, general and organic chemistry, qualitative analysis, physical chemistry or laboratory physics, and either French or German.

**ALL THE GENERAL FACILITIES OF THE UNIVERSITY ARE AVAILABLE TO MEDICAL STUDENTS**

As the number admitted to each class is limited, applications must be made before July 1.

Dean, Yale University School  
of Medicine  
NEW HAVEN, CONN.

## Transparent Spectrum Tubes



With platinum or aluminum electrodes or electrodeless.  
Bureau of Standards Design. Empty or Gas-filled.  
Prompt delivery from stock.  
Obtainable through dealers.

THE THERMAL SYNDICATE, Ltd.,

62 Schenectady Avenue,  
Brooklyn, N. Y.



## BOSTON UNIVERSITY SCHOOL OF MEDICINE



ORGANIZED IN 1873

### ANNOUNCEMENT

may be obtained by application to

WESLEY T. LEE, M.D., Registrar

80 East Concord Street,

Boston, Massachusetts.

## Research Prize of \$1,000

### THE ELLEN RICHARDS RESEARCH PRIZE

is offered for award in the year 1925. Theses by women based on independent laboratory research are eligible for competition and must reach the Committee before January 15, 1925.

If the prize is not awarded a grant is available under certain conditions.

For circulars of information and application blank, apply to

President ADA L. COMSTOCK

Radcliffe College, Cambridge, Mass.

For further information apply to the Secretary, Mrs. Samuel F. Clarke, Williamstown, Mass.

## Marine Biological Laboratory

Woods Hole, Mass.

### INVESTIGATION

Entire Year

Facilities for research in Zoology, Embryology, Physiology, and Botany. Eighty-four private laboratories \$100 each for not over three months. Thirty tables are available for beginners in research who desire to work under the direction of members of the staff. The fee for such a table is \$50.00.

### INSTRUCTION

July 2 to August  
12, 1924

Courses of laboratory instruction with lectures are offered in Invertebrate Zoology, Protozoology, Embryology, Physiology and Morphology and Taxonomy of the Algae. Each course requires the full time of the student. Fee, \$75.00.

### SUPPLY DEPARTMENT

Open the Entire  
Year

Animals and plants, preserved, living, and in embryonic stages. Preserved material of all types of animals and of Algae, Fungi, Liverworts and Mosses furnished for classwork, or for the museum. Living material furnished in season as ordered. Microscopic slides in Zoology, Botany, Histology, Bacteriology. Catalogues of Zoological and Botanical material and Microscopic Slides sent on application. State which is desired. For catalogues and all information regarding material, address:



GEO. M. GRAY,

Curator, Woods Hole, Mass.

The annual announcement will be sent on application to The Director, Marine Biological Laboratory, Woods Hole, Mass.

## Summer School in Biology at Cornell University

July 5—August 15, 1924

Courses in zoology, entomology, embryology, histology, human physiology, botany, mycology, plant pathology, plant physiology, bacteriology, cytology, and genetics.

Graduate work leading to certificates and advanced degrees.

All the well-known facilities of the Cornell laboratories and libraries at the service of the students. Rich collecting ground easily accessible.

A wide range of courses in several colleges of the University: *Agriculture, Arts and Sciences, Engineering, Law.*

Special courses in Education and Rural Education.

Write for catalogue to the

SECRETARY OF CORNELL UNIVERSITY  
Ithaca, New York

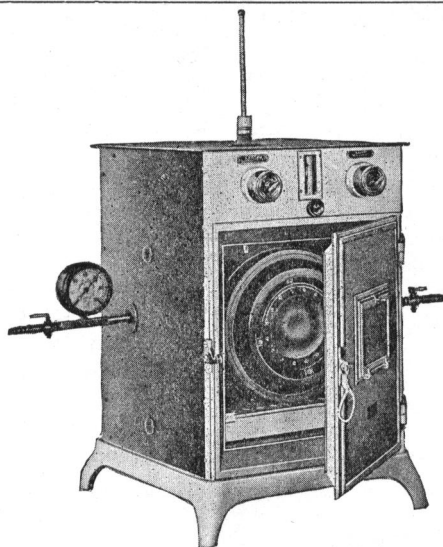
## SCIENTIFIC PERIODICALS

Chemical, Medical and allied subjects. Complete files, volumes and copies, bought and sold. Kindly send us a list of your wants.

B. LOGIN & SON

29 East 21st Street

New York, N. Y.



**Freas Vacuum Oven—Type R V**

## **For Testing Under Controlled Conditions**

For heating or drying materials under controlled conditions, you will find a FREAS Constant Temperature Vacuum Oven a most reliable laboratory assistant.

By using a FREAS Vacuum Oven you can control the quality of the medium surrounding the material being heated. That is, you can heat materials at a constant temperature in the presence of nitrogen, hydrogen, cleansed air or other gases.

For most accurate moisture tests, you should use a FREAS Vacuum Oven with a constant stream of air, dried by passing the inlet air through concentrated sulphuric acid, flowing over the samples.

The FREAS Vacuum Oven speeds up drying operations.

For growing cultures of anaerobic bacteria, the FREAS Vacuum Oven will be found most excellent equipment.

The FREAS Vacuum Oven is made by the largest manufacturers of high grade constant temperature apparatus in the world.

*Write to us for catalogues and prices.*

**The Thermo Electric Instrument Co.**

**8 Johnson St., Newark, N. J.**

# **FREAS**

## **Electric Vacuum Oven**