

THE SCIENTIFIC MONTHLY

EDITED BY J. McKEEN CATTELL

APRIL, 1927

CONTRIBUTIONS THAT HAVE BEEN MADE BY PURE SCIENCE TO THE ADVANCEMENT OF ENGINEERING AND INDUSTRY:

INTRODUCTION. DR. C. R. RICHARDS.
ASTRONOMY. DR. FRANK SCHLESINGER.
BIOLOGICAL SCIENCE. PROFESSOR HENRY B. WARD.

CHEMISTRY. DR. CHARLES H. HERTY.
ECONOMICS. PROFESSOR JOSEPH H. WILLITS.
GEOLOGY. PROFESSOR HEINRICH RIES.
MATHEMATICS. PROFESSOR GILBERT AMES BLISS.

PUBLIC HEALTH. PROFESSOR RANDLE C. ROSENBERGER.

PSYCHOLOGY. DR. J. McKEEN CATTELL.

WHAT TRANSPIRES IN THE KINGDOM OF RESEARCH. T. SWANN HARDING.

INVESTIGATION OF LIFE IN THE SEA. PROFESSOR W. E. ALLEN.

THE MONGOLIAN AGE OF MAMMALS. PROFESSOR WILLIAM K. GREGORY.

THE LIFE HISTORY OF THE FISH ASTROSCOPUS. PROFESSOR ULRIC DAHLGREN.

CHEMICAL MICROSCOPY—TIME AND LABOR SAVER. PROFESSOR E. M. CHAMOT.

THE PROGRESS OF SCIENCE:
Nature's Notebook; Early Flies; The Bicentennial of Newton's Death.

JUNE, 1927

SKELETAL RECORDS OF MORTALITY. PROFESSOR T. WINGATE TODD.

THE STUDENT OF NATURE. DR. PAUL R. HEYL.

SCIENCE IN JAPAN. DR. HERBERT E. GREGORY.

THE OLDEST KNOWN PETRIFIED FOREST. WINIFRED GOLDRING.

REFLECTIONS ON CREDULITY. PROFESSOR A. W. MEYER.

PROGRESS. DR. J. P. SIMONDS.

THE FUTURE BALANCE OF LIFE. AUSTIN H. CLARK.

FISHES THAT LIVE IN THE MOUTHS OR GILL CAVITIES OF OTHER FISHES. E. W. GUDGER.

THOMAS MOFFAT, ELIZABETHAN PHYSICIAN AND ENTOMOLOGIST. HARRY B. WEISS.

THE PROGRESS OF SCIENCE:
Researches described at the Annual Meeting of the National Academy of Sciences.

INDEX TO VOLUME XXIV.

MAY, 1927

DID MAN ORIGINATE IN CENTRAL ASIA? PROFESSOR WILLIAM K. GREGORY.

THE SESQUICENTENNIAL OF THE BIRTH OF GAUSS. G. WALDO DUNNINGTON.

CRIME AND PUNISHMENT:

Causes and Mechanisms of Prevalent Crimes. THE HONORABLE WILLIAM MCADOO.

Crime in the Commercial Field. PROFESSOR JOSEPH MAYER.

Local Crime Commissions. JAMES M. HEPBRON.
Stages of Evolution and Relation to Crime. PROFESSOR LANCASTER D. BURLING.

Immigration Law Enforcement. PROFESSOR DONALD YOUNG.

GRAVITY ON THE EARTH AND ON THE MOON. FRED E. WRIGHT.

PHONOPHOTOGRAPHY IN THE MEASUREMENT OF THE EXPRESSION OF EMOTION AND SPEECH. DEAN CARL E. SEASHORE.

THE PROGRESS OF SCIENCE:

Legislation against the Teaching of Evolution; The Antiquity of Man in America; Advances in Television.

JULY, 1927

A PARADISE FOR PLANT LOVERS. DR. ALBERT F. BLAKESLEE.

THE GROWTH OF EXPERIMENTATION IN EARLY SCIENCES. DR. EDWARD F. ADOLPH.

THE SOLID GROUND OF NATURE. DR. PAUL R. HEYL.

ARTIFICIAL BEACH CONSTRUCTION IN THE VICINITY OF NEW YORK. DR. HENRY S. SHARP.

THE SOIL AND THE MICROBE. DR. SELMAN A. WAKSMAN.

WHAT IS A POLITICAL ANIMAL? PROFESSOR EZRA BOWEN.

OYSTER FARMING. HERBERT F. PRYTHERCH.
WATCHMAKERS AND INVENTORS. CARL W. MITMAN.

TYNDALL'S EXPERIMENTS ON MAGNE-CRYSTALLIC ACTION. SIR WILLIAM BRAGG.

THE DEATH PENALTY FROM A SCIENTIFIC POINT OF VIEW. HOWARD C. FORBES.

ERWIN F. SMITH—A YOUNG MAN'S IMPRESSION. DONALD CULROSS PEATTIE.

THE PROGRESS OF SCIENCE:

The Solar Eclipse of June 29; Scientific Aids to Aviation; The Earth Inductor Compass; Langley's Aerodrome; The Guggenheim School of Aeronautics of New York University.

THE SCIENCE PRESS

GRAND CENTRAL TERMINAL, N. Y. CITY

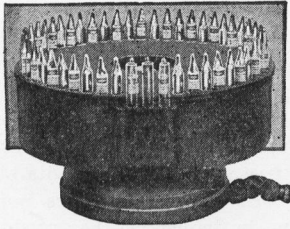
Yearly Subscription \$5.00

::

::

::

Single Copies 50 cents



Pat. applied for.

UNVARYING ACCURACY WITH LAMOTTE STANDARDS

Scientists, teachers and research workers find the LaMotte Roulette Comparator the ideal equipment for making hydrogen ion tests because of its simplicity, convenience and accuracy. LaMotte Color Standards insure absolute accuracy at all times. They are standard equipment in many important laboratories.



Write for a copy of our interesting brochure, "The ABC of Hydrogen Ion Control," explaining this modern control method in simple language. Free upon request.

LaMOTTE CHEMICAL PRODUCTS CO.
418 Light St. Baltimore, Md., U. S. A.

WASHINGTON UNIVERSITY SAINT LOUIS

School of Medicine

NEW ADMISSION REQUIREMENTS

At least three years of approved college work including specified requirements in the sciences.

DEGREE OF B.S. IN MEDICAL SCIENCE

This degree may be awarded at the end of the third or fourth year to students fulfilling certain conditions including the preparation of a thesis.

DEGREE OF DOCTOR OF MEDICINE

Upon satisfactory completion of prescribed four-year course.

For catalogue and information, address
**THE DEAN, Washington University
School of Medicine, St. Louis,
Missouri**

New Publications of THE PHILIPPINE BUREAU OF SCIENCE

AN ENUMERATION OF PHILIPPINE FLOWERING PLANTS

By Elmer D. Merrill. 4 volumes: vol. 1, 463 pages; vol. 2, 530 pages; vol. 3, 628 pages; vol. 4, 515 pages, 6 plates, and 3 text figures; postpaid, \$10.00.

GEOLOGY AND MINERAL RESOURCES OF THE PHILIPPINE ISLANDS

By Warren D. Smith. 560 pages, 39 plates, and 23 text figures; postpaid, \$2.50.

THE PHILIPPINE JOURNAL OF SCIENCE

A monthly, issued in three volumes a year; per year, \$5.00.

A list of the publications of the Philippine Bureau of Science and a sample copy of the Philippine Journal of Science will be sent upon request.

*Subscriptions and orders for publication
should be sent to*

THE BUSINESS MANAGER Philippine Journal of Science

Bureau of Science

Manila, P. I.

Marine Biological Laboratory Woods Hole, Mass.

INVESTIGATION Entire Year

Facilities for research in Zoology, Embryology, Physiology, and Botany. Fifty-two private laboratories \$100 each and ninety-four private laboratories \$200 each for not over three months. Fifty-six tables are available for beginners in research who desire to work under the direction of members of the staff. The fee for such a table is \$50.00.

INSTRUCTION June 28 to August 8, 1927

Courses of laboratory instruction with lectures are offered in Invertebrate Zoology, Protozoology, Embryology, Physiology, and Morphology and Taxonomy of the algae. Each course requires the full time of the student. Fee, \$75.00.

SUPPLY DEPARTMENT Open the Entire Year

BIOLOGICAL SUPPLIES
For the classroom, museum or collector.

First class preparations.
Send for new (1926) **Catalogue No. 1.** Zoological and Embryological material, Life Histories and Habitat Groups.

Catalogue No. 2, Botanical material.
Catalogue No. 3, Microscopic slides.

Address all correspondence regarding material and catalogues to:

Supply Department,
GEO. M. GRAY,

Curator, Woods Hole, Mass.

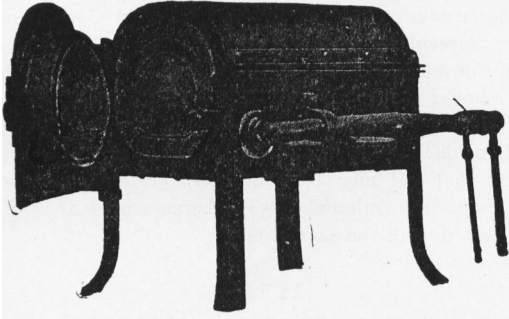
The annual announcement will be sent on application to The Director, Marine Biological Laboratory, Woods Hole, Mass.



Meker Furnaces

for

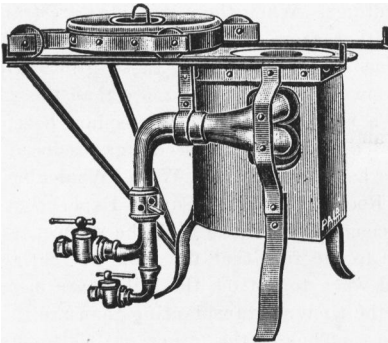
ALL TEMPERATURES UP TO 1750° C



Muffle Furnace No. 191

This muffle furnace attains temperatures up to 1650° C. and is widely used for ash ignitions, assaying, heat treating, enameling, fusion points, etc.

Made in six sizes.



Crucible Furnace No. 223A

Temperatures up to 1750° C. are obtained with this furnace. It is dependable and economical for metallurgical analysis and melting of gold, silver, palladium, nickel, copper, brass, iron, steel, alloys, etc. Also used for fusion point tests.

Made in six sizes.

Complete description of all Meker Furnaces with price lists will be sent upon request.

PALO COMPANY

APPARATUS FOR INDUSTRIAL AND
LABORATORY USE

153 West 23rd Street New York, N. Y.

PHYSIOLOGICAL AND ECOLOGICAL APPARATUS

For measuring evaporation conditions, total sunshine influence on evaporation, capacity of plant leaves to resist water loss, capacity of soil to supply water to plants, etc. Standardized atmometers, auto-irrigators, soil points, standardized cobalt-chloride paper and color-standard papers, leaf clips, etc.

BURTON E. LIVINGSTON 6214 Oak Lane, Cedarcroft,
Baltimore, U. S. A.

SCIENCE INSTRUCTOR

Science instructor wanted to act as publisher's adviser concerning possible manuscripts from his college or university.

Box "G. K. S.," care of The Science Press, 3941
Grand Central Terminal, New York, N. Y.

THE MICROSCOPE

By SIMON H. GAGE, of Cornell University

Revised Edition (14th) Ready

The Old and the New in Microscopy, with a special chapter on Dark-Field Methods and their Application.

Postpaid, \$3.50

COMSTOCK PUBLISHING CO., ITHACA, N. Y.

SCHOOL OF APPLIED MICROSCOPY

Room 1501, Pershing Square Building, New York City. Evening Classes. Course of Instruction includes lectures and demonstrations on the Microscope and Accessories; Preparation of Material, Staining, Sectioning, Slide Making; Outline of Photomicrographic Methods. Metallography Course also available. Fees nominal.

CHARLES P. TITUS, Director Telephone 2580 Walker

SCIENTIFIC PERIODICALS

Chemical, Medical and allied subjects. Complete files, volumes and copies, bought and sold. Kindly send us a list of your wants and items of which you may wish to dispose.

B. LOGIN & SON

29 East 21st Street

New York, N. Y.



Hy-Speed Mixers

Clamp to any tank, operate from light circuit, mix all kinds of liquids. Also used for even temperature baths. Thousands in use.

Write for circular.

ALSO ENGINEERING CO.
47 W. 63rd St., New York

THE SCIENCE PRESS PRINTING COMPANY

PRINTERS OF

SCIENTIFIC AND EDUCATIONAL
JOURNALS, MONOGRAPHS
AND BOOKS

Correspondence Invited

LANCASTER, PENNSYLVANIA