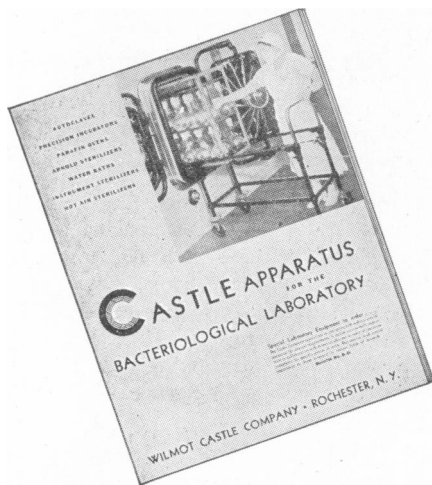


FREE NEW Bulletin of CASTLE

Bacteriological Apparatus

A new and important bulletin of Castle Apparatus for the Bacteriological Laboratory is now ready for distribution. **WRITE TO-DAY FOR YOUR COPY.**

This new bulletin, fully illustrated, lists the latest Castle laboratory apparatus including Autoclaves, — single and double wall types, laboratory sterilizers, precision incubators, paraffin embedding ovens, Arnold steam sterilizers, serological water baths and Hot-air sterilizers. Bring your file up-to-date by asking for your copy now, and mentioning the apparatus on which you want more detailed information.



WILMOT CASTLE COMPANY

1212 University Avenue

Rochester, N. Y.

NEW PORCELAIN BASKET FOR CHEMICAL CENTRIFUGE



The new International Chemical Centrifuge, with PORCELAIN Basket and Draining Chamber, is the answer to a persistent demand. This centrifuge is for use in those cases where small amounts of strongly corrosive mother liquors, which would severely attack metal parts, are involved and also for those cases where it is desired to avoid any possibility of contamination from a metal basket and draining chamber.

All of the porcelain parts are housed inside a steel casing with a locking hinge cover for protection. The inner and outer surfaces of the steel casings are protected by a baked Glyptal enamel. These porcelain parts are interchangeable with the metal baskets and draining chambers on any international Chemical Centrifuge now in use.

The motor of the International Chemical Centrifuge is of universal type to operate on any lighting circuit, either A.C. or D.C. The basket is approximately 5 inches in diameter by $2\frac{1}{2}$ inches deep with $\frac{3}{4}$ inch flange and has 0.3 liter cake capacity.

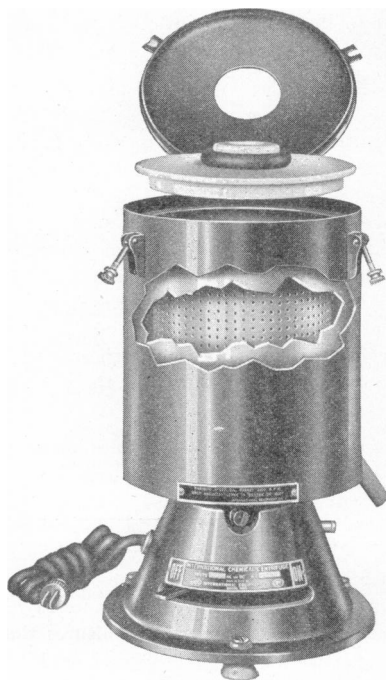
Descriptive Bulletin CH upon request

INTERNATIONAL EQUIPMENT COMPANY

352 Western Avenue

Boston, Mass.

Makers of Fine Centrifuges



Wratten Light Filters

*for Photography, Photomicrography,
Spectroscopy, Photometry, and Astronomy*

WRATTEN LIGHT FILTERS are universally used in widely separated fields of scientific research.

The Wratten list includes filters for use with all types of color-sensitive films and plates. Over one hundred different filters are available.

Complete spectrophotometric data are given in the Eastman publication, *Wratten Light Filters*; price, 50 cents. A price list of filters will be furnished free on request.

EASTMAN KODAK COMPANY
Research Laboratories **ROCHESTER, N. Y.**

SPRAGUE - DAWLEY, INC.

Pioneers in development of the standard laboratory rat

Madison, Wisconsin

FOR SALE

SPECTROMETER, SPECTROSCOPE, MONOCHROMETER

with all attachments for accurate work in Ultra-violet, visible or Infra red spectrum. Only used a few hours actual work. Cost nearly \$1,000. Sacrifice as no longer needed for special work. Address: J. Chesney, Algonquin, Illinois.

—WE DO TRANSLATIONS—

Technical and Scientific Translations
from and into all languages

Chemistry, Physics, Biology, Medicine; Metallurgy, Engineering, Aeronautics, Radio, etc. We translate manuscripts, books, patents, articles from foreign journals, catalogues and descriptive literature.

TRANSLATION & RESEARCH BUREAU
55 West 42nd St., New York, N. Y.

THE SCIENCE PRESS PRINTING CO.

PRINTERS OF

SCIENTIFIC AND EDUCATIONAL JOURNALS,
MONOGRAPHS AND BOOKS

Correspondence Invited

LANCASTER, PENNSYLVANIA

Bargains in New and Used Glasses! All makes,



Size & powers of nature, sport & hunting glasses, \$8. upward. Telescopes, spotting & riflescopes. Microscopes, magnifiers & compasses \$1. upward. Repair work & goods guaranteed.

J. ALDEN LORING, OWEGO, N. Y.

Catalog free,
Box B.

Illuminating Pocket Magnifier

CARL ZEISS
JENA



ZEISS

Repair Service

Our stock of CARL ZEISS optical instruments, accessories and repair parts on hand in New York is sufficient for a considerable time. Purchasers and owners of Zeiss equipment can be assured of uninterrupted service in our large repair shop at our main office in New York, or in the repair shop of our Los Angeles branch.

THE ZEISS Illuminating Pocket Magnifier makes possible accurate observation under poor lighting conditions by providing its own source of illumination. It is useful for examining the surfaces of scientific, mineralogical or geological specimens, as well as the interior of cavities, &c. Four interchangeable slip-on mounts for the aplanatic magnifying lenses provide a range of 3x, 6x, 8x or 10x magnification.

Leaflet MED 333 upon request.

CARL ZEISS, INC.

485 Fifth Avenue
NEW YORK

728 So. Hill Street
LOS ANGELES

CARL ZEISS
JENA