



Supporting Online Material for
Changing Governance of the World's Forests

Arun Agrawal, Ashwini Chhatre, Rebecca Hardin

*To whom correspondence should be addressed.

E-mail: arunagra@umich.edu

Published 13 June 2008, *Science* **320**, 1460 (2008)

DOI: 10.1126/science.1155369

This PDF file includes:

Figs. S1 to S3

References

Captions for Figures in Supplemental Online Materials

Figure S1 Growth in protected areas between 1950-2005 (IUCN categories Ia, Ib, and II) (S2)

Figure S2 Ownership of forests and other wooded land by country – 2000 (S1).

“Other ownership” denotes communal and any other form of ownership than public or private. Only countries with greater than 5 million hectares of forest are depicted on the map. Base Map Source: Countries 2006 ArcWorld Supplement, ESRI ArcGIS 9 Media Kit.

Figure S3 Change in extent of forest and other wooded land by country between 2000 - 2005 (S1).

Only countries with greater than 5 million hectares of forest are depicted on the map. Base Map Source: Countries 2006 ArcWorld Supplement, ESRI ArcGIS 9 Media Kit.

Figure S1

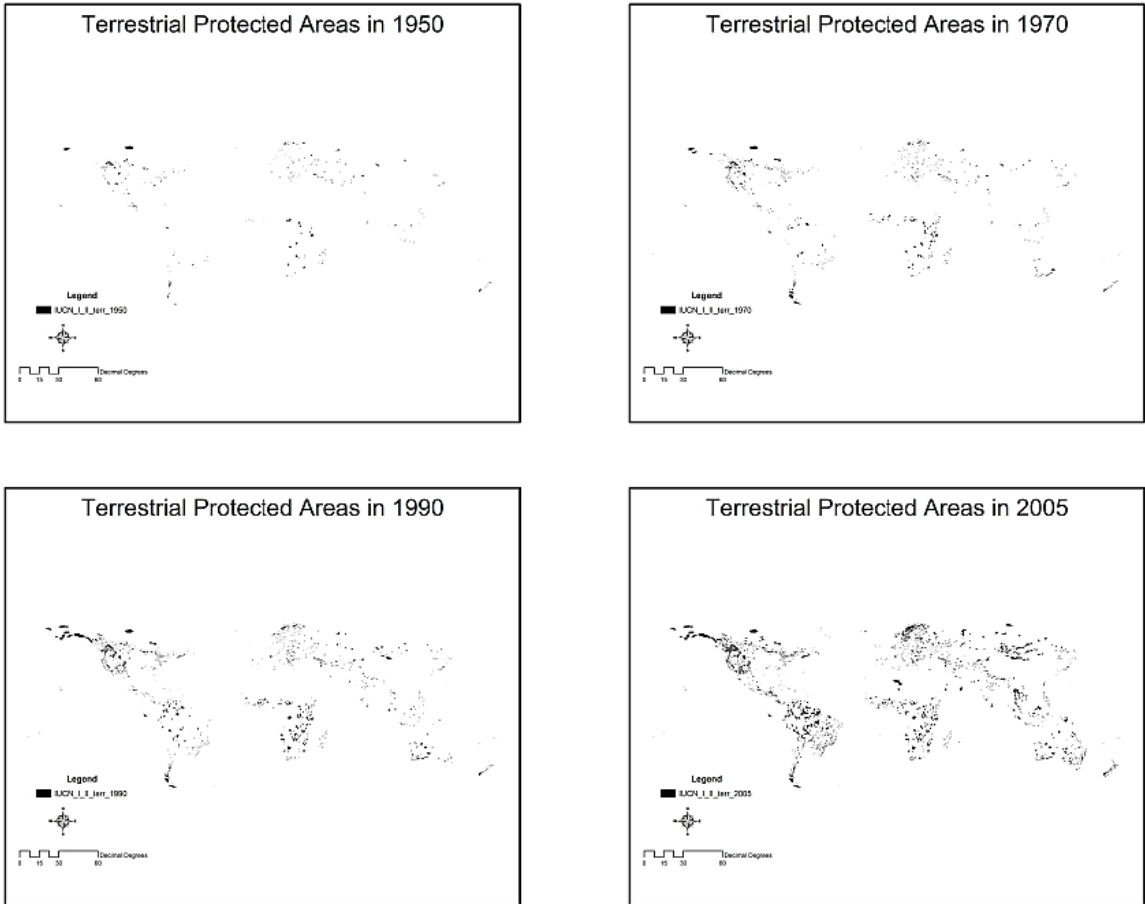
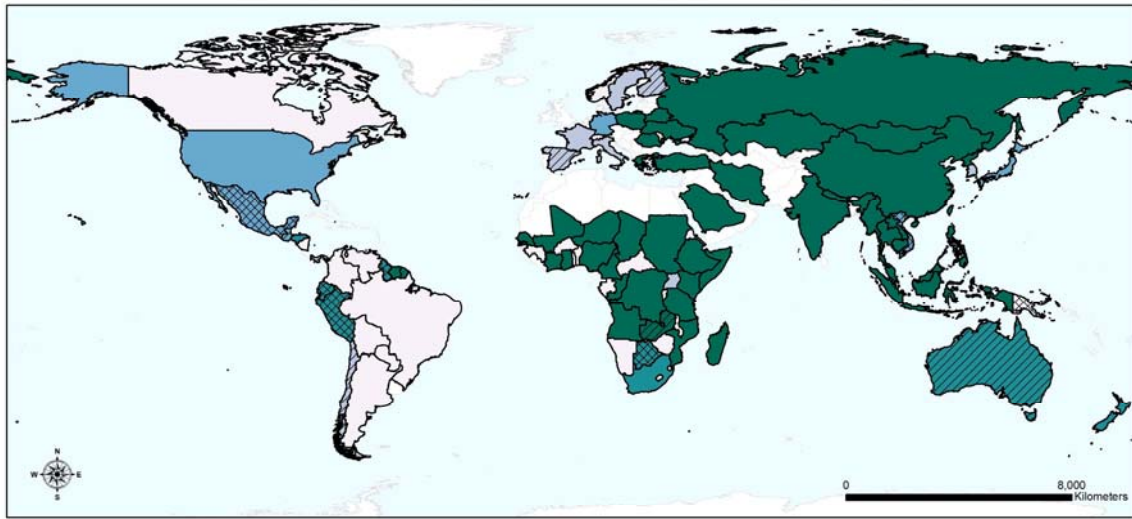
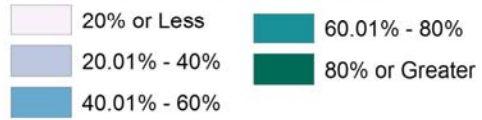


Figure S2



Public Ownership (% per Country)



Other* Ownership (% per Country)

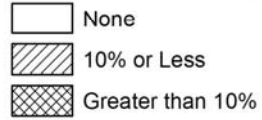
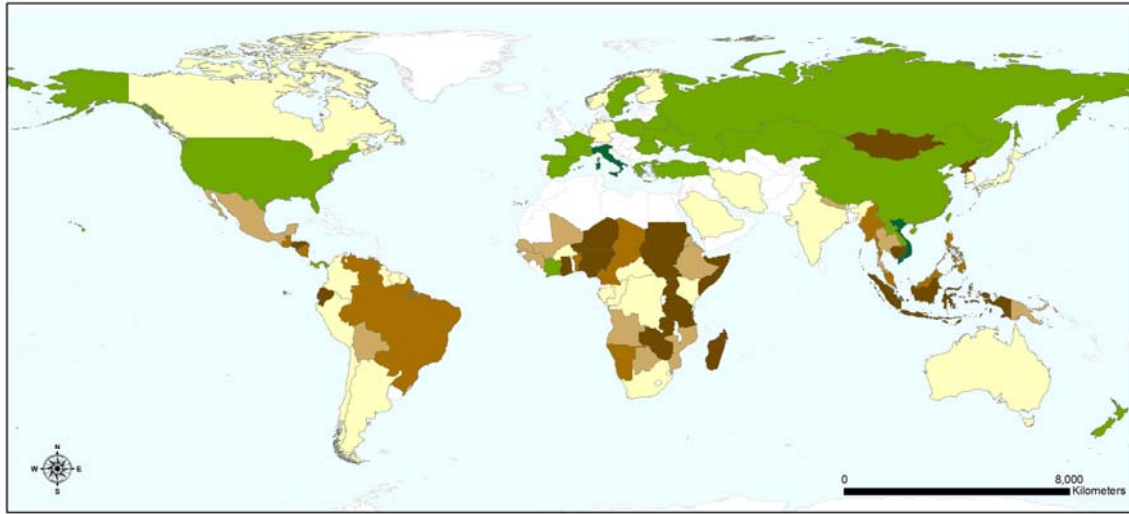



Figure S3



Change in Forest Extent (Percent by Country)

- | | |
|---|---|
|  Reduction in Cover Greater Than 0.05% |  Reduction in Cover Between 0.01% and 0% |
|  Reduction in Cover Between 0.05% and 0.025% |  Increase in Cover Between 0% and 0.05% |
|  Reduction in Cover Between 0.025% and 0.01% |  Increase in Cover Greater than 0.05% |

References and Notes

S1. Food and Agriculture Organization, “Global Forest Resources Assessment, 2005”

(FAO, Rome, 2005)

S2. United Nations Environment Program and World Conservation and Monitoring

Center, “World Database on Protected Areas (UNEP-WCMC, Cambridge (U.K.), 2007)

S3. We thank Rachel Kornak for her assistance in preparing Figures S2 and S3.